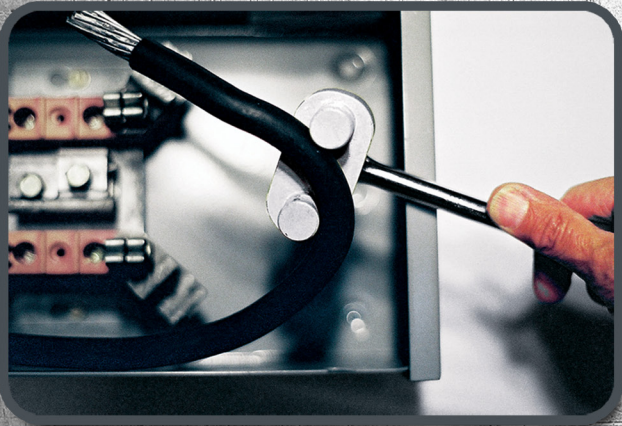
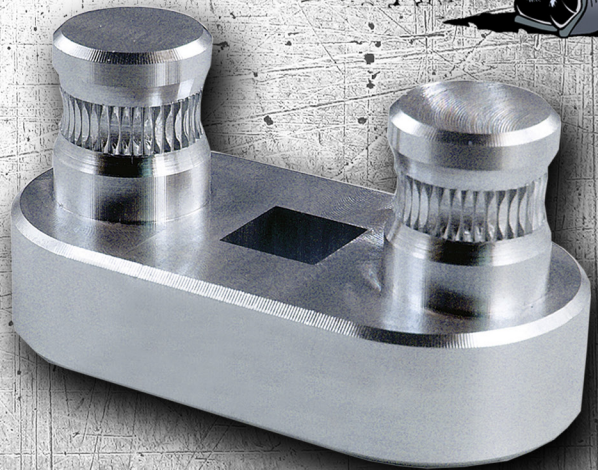


Bend-All

SAVE YOUR KNUCKLES BY USING OUR BEND-ALL CABLE BENDER! MADE WITH MACHINED AIRCRAFT ALUMINUM, THIS CABLE BENDER IS EXTREMELY STRONG AND DURABLE. IT CONNECTS TO YOUR STANDARD 1/2" RATCHET, MAKING CABLE BENDING A BREEZE FOR YOU.



Part# 77455

"Wire Bending Made Easy"



The Bulldog Bender is designed and manufactured by an electrician for electricians. Used for bending wire in panels, disconnects, LBs & wireways. The Bulldog Bender will prove to be a valuable tool to add to your arsenal. As with any specialty tool, with practice you will learn how to use the Bender to its full bending potential.

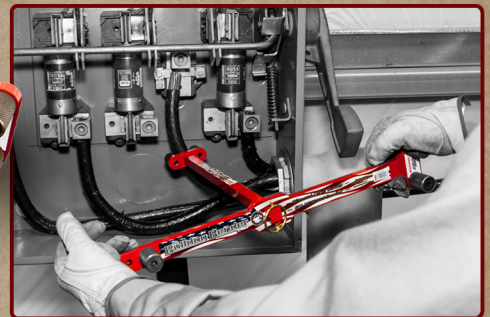


See It In Action!

The Bulldog Pro w/ Adaptor
Rated to 500 MCM
Part# 78501

Bulldog Original
Rated up to 500 MCM
Part# 78500

The Bulldog Big Daddy Set
Rated up to 750 MCM
Part# 78600



ALSO AVAILABLE: THREE PIECE SET PRO WITH ADAPTOR AND ORIGINAL - PART #78502
ALL BULLDOGS SHIPPED WITH KNURLED DOWELS - SMOOTH DOWELS AVAILABLE