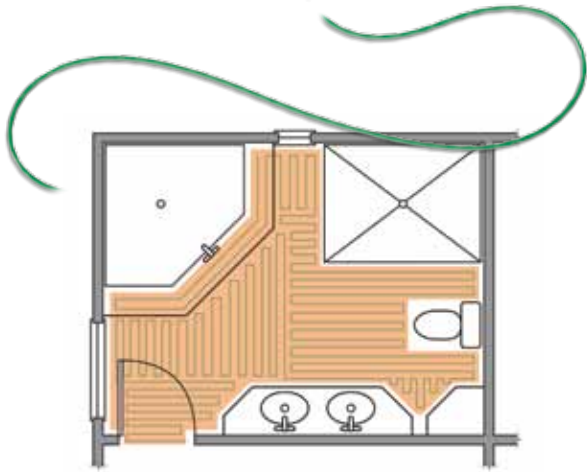


GreenCableSURFACE™



Outstanding flexibility

The Green Cable™ Surface 2W and 3W offers the ultimate in comfort no matter what the room or its dimensions, because it conforms to any shape. Designed for dry and wet environments, it is compatible with most floor coverings and is easy to install thanks to the *Universal Snap-in Gauges™*. Its design does not require returning the cable to the thermostat and produces maximum heating power along its entire surface.

Green Cable Surface 2W

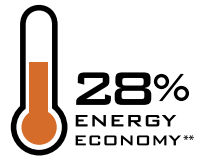
Optimizes the radiant heat and ensures that it spreads evenly over all installation surfaces and under all floor coverings due to its 5 cm or 7.6 cm (2 in or 3 in) spacing.

Green Cable Surface 3W

For larger rooms with natural stone or ceramic floors, whose plywood or concrete subfloor guarantees better heat conduction.

Benefits of the Green Cable Surface 2W or 3W

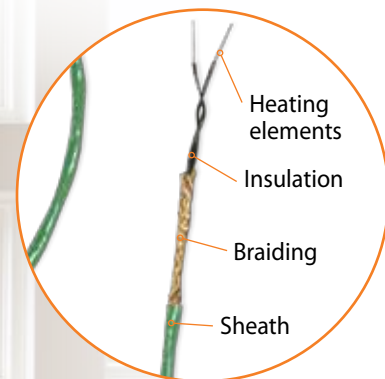
- Compatible with most floor coverings
- Fits all room shapes and sizes
- EMF-free (electromagnetic field)*
- Does not dry the air nor spread dust and germs
- Requires no maintenance
- Easy installation: no return to the thermostat
- Robust mechanical joint system
- Universal Snap-in Gauges
- Small diameter cable that reduces the quantity of mortar or self-levelling underlayment required for glazing
- Strong and reliable copolymer jacket
- Designed for installation in a wet environment (make sure that the installation complies with the local or regional electrical code)
- Manufactured entirely at the FLEXTHERM plant, with end-to-end quality control
- CSA approved (Canada and the US)
- 25 year limited warranty



* Based on the installation instructions included in the FLEXTHERM installation guide, the recorded EMF measurement is considered insignificant (between 0.25 mg and 0.5 mg).
** In rooms heated with the FLEXTHERM floor heating system.

Unique in its design and comfort

Green Cable Surface 2W or 3W consists of two twisted and paired heating elements, covered in copolymer. This innovation developed by FLEXTHERM uses ultra-resistant and high-performance components to provide you with complete comfort, peace of mind, a healthy environment and real energy savings.



"We have performed the installation of many FLEXTHERM floor heating systems in the past. We recently used the FLEXSnap system, which was amazing. It saved a tremendous amount of time and labor. What a great new system!"

Leo Lantz
Glen Allen, VA

System and installation recommendations suited to your needs

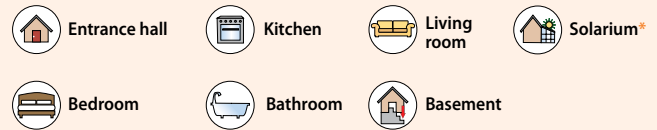
By starting from the centre and answering three simple questions, the diagram will guide you to the best heating system for your floor heating project.

As easy as 1, 2, 3!

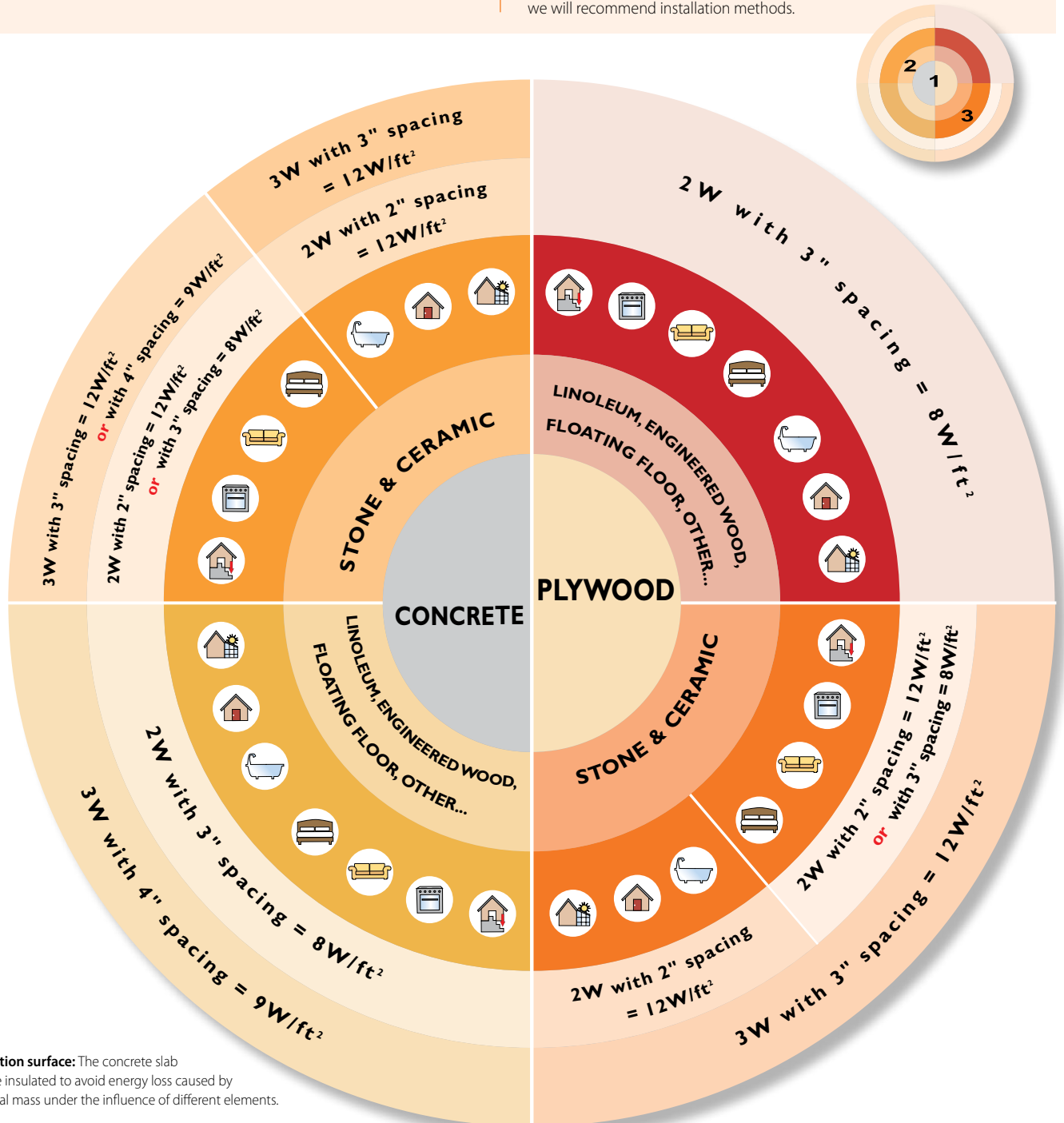
This 2W and 3W diagram is designed to help you choose the right Green Cable™ Surface for your project.

- 1) Installation surface:** On what surface will the heating cable be installed (plywood or concrete)?
- 2) Floor covering:** What floor covering will you use for your project?

3) Type of room:



Recommended installation method: After you go through steps 1, 2 and 3, we will recommend installation methods.



Installation surface: The concrete slab must be insulated to avoid energy loss caused by a thermal mass under the influence of different elements.

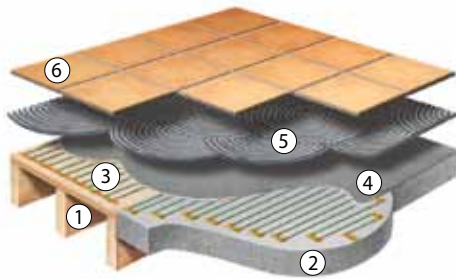
Floor covering: Always check with the manufacturer whether a floor covering is compatible with floor heating systems.

* **Solarium:** Depending on your solarium's insulation and your geographical location, a secondary heating system may be recommended for greater comfort.

Floor coverings

The type of floor covering also has an influence on the choice of system output. Output of 129 W/m² (12 W/ft²) is reserved for ceramic and natural stone; 86 W/m² (8 W/ft²) lets you choose almost any floor covering. See for yourself!

- ① Wood structure
- ② Concrete structure
- ③ FLEXTHERM's Green Cable Surface
- ④ Mortar or self-levelling cement
- ⑤ Adhesive
- ⑥ Floor covering



Customized comfort

A perfect fit for any surface, the Green Cable Surface 2W or 3W is available in a range of lengths and with an output of 120 volts or 240 volts. It is also available in 208 volts by special order. (Minimum quantity required.)

All kits include the cable, gauges, hot glue sticks and an installation guide.



Compatibility of the Green Cable Surface with installation surfaces and floor coverings

| Green Cable Surface 2W | | | | | | | | |
|------------------------------|----------------|---------------|------------------------------|--------------------|-----------------------------|-----------------------|----------------------|---|
| Installation surface | Floor covering | | | | | | | |
| | Ceramic | Natural stone | Engineered wood ² | Vinyl ² | Floating floor ² | Linoleum ² | Parquet ² | Carpet ² (without rubber backing or carpet padding) |
| Plywood | 5 cm | 5 cm | 7.6 cm | 7.6 cm | 7.6 cm | 7.6 cm | 7.6 cm | |
| Smooth concrete ¹ | 5 cm | 5 cm | 7.6 cm | 7.6 cm | 7.6 cm | 7.6 cm | 7.6 cm | 7.6 cm |
| Concrete panels | 5 cm | 5 cm | 7.6 cm | 7.6 cm | 7.6 cm | 7.6 cm | 7.6 cm | |
| Ceramic | 5 cm | 5 cm | 7.6 cm | 7.6 cm | 7.6 cm | 7.6 cm | 7.6 cm | |
| Acoustic membrane | 5 cm | 5 cm | 7.6 cm | 7.6 cm | 7.6 cm | 7.6 cm | 7.6 cm | |
| Anti-fracture membrane | 5 cm | 5 cm | 7.6 cm | 7.6 cm | 7.6 cm | 7.6 cm | 7.6 cm | |
| Scratch coat | 5 cm | 5 cm | 7.6 cm | 7.6 cm | 7.6 cm | 7.6 cm | 7.6 cm | |
| Mortar bed ¹ | 5 cm | 5 cm | | | | | | |


5 cm (2 in) spacing – 129 W/m² (12 W/ft²)

7.6 cm (3 in) spacing – 86 W/m² (8 W/ft²)

¹ The concrete slab (or mortar bed) must be insulated to avoid heat loss from below. FLEXTHERM also recommends that all rooms supported by the concrete slab be equipped with a FLEXTHERM floor heating system to avoid perimeter heat loss.

² For floor coverings other than ceramic and natural stone, always check with the manufacturer whether its floor covering is compatible with floor heating systems.

Green Cable Surface 3W

| Installation surface | Floor covering | | | | | | | |
|------------------------------|---|---|---|---|--|---|---|---|
| | Ceramic | Natural stone | Engineered wood ² | Vinyl ² | Floating floor ² | Linoleum ² | Parquet ² | Carpet ² (without rubber backing or carpet padding) |
| Plywood |  |  | | | | | | |
| Smooth concrete ¹ |  |  |  |  |  |  |  |  |
| Concrete panels |  |  | | | | | | |
| Ceramic |  |  | | | | | | |
| Acoustic membrane |  |  | | | | | | |
| Anti-fracture membrane |  |  | | | | | | |
| Scratch coat |  |  | | | | | | |
| Mortar bed ¹ |  |  | | | | | | |



7.6 cm (3 in) spacing – 129 W/m² (12 W/ft²)





10 cm (4 in) spacing – 97 W/m² (9 W/ft²)

¹ The concrete slab (or mortar bed) must be insulated to avoid heat loss from below. FLEXTHERM also recommends that all rooms supported by the concrete slab be equipped with a FLEXTHERM floor heating system to avoid perimeter heat loss.

² For floor coverings other than ceramic and natural stone, always check with the manufacturer whether its floor covering is compatible with floor heating systems.

Electrical characteristics

| | Green Cable Surface 2W | Green Cable Surface 3W |
|--|--|---|
| Standard voltage | 120 and 240 volts (208 volts available upon request) | 120 and 240 volts (208 volts available upon request) |
| Output | 6.6 W/linear m (2 W/linear ft) | 9.9 W/linear m (3 W/linear ft) |
| Output by type of installation | 5 cm (2 in) spacing – 129 W/m ² (12 W/ft ²) 7.6 cm (3 in) spacing – 86 W/m ² (8 W/ft ²) | 7.6 cm (3 in) spacing – 129 W/m ² (12 W/ft ²) 10 cm (4 in) spacing – 97 W/m ² (9 W/ft ²) |
| Connection to the thermostat | Easy installation: a single cold lead is connected to the thermostat (return feed on the same cable) | Easy installation: a single cold lead is connected to the thermostat (return feed on the same cable) |
| Cold lead | 3 m (10 ft) Two conductors and grounding | 3 m (10 ft) Two conductors and grounding |
| Certification | CSA Canada: series type G and W space heating CSA US: series type C space heating Dry and wet environments | CSA Canada: series type G and W space heating CSA US: series type C space heating Dry and wet environments |
| No significant electromagnetic field emission* |  |  |

* Based on the installation instructions included in the FLEXTHERM installation guide, the recorded EMF measurement is considered insignificant (between 0.25 mG and 0.5 mG).