

CSM SERIES

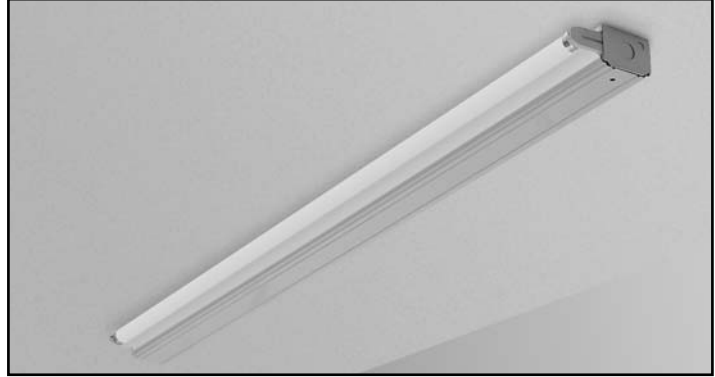
SIDEMOUNT STRIP

2-3/4" CHANNEL WIDTH, 24", 36", 48" LENGTHS

1 OR 2 LAMP

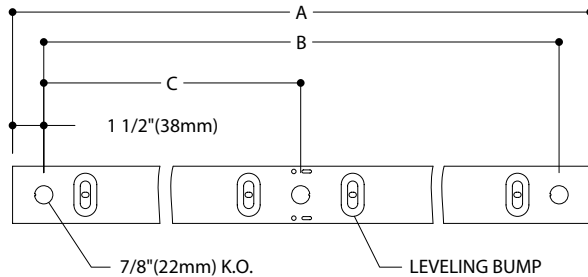
T8 OR T12 LAMP

- Three lengths.
- Fully enclosed wiring.
- Snap-on ballast cover, no fasteners.
- 48" length units UL Listed for low density mounting.
- Safe-handling metal edges.
- Only 1-7/8" deep.
- For applications where a low profile is required such as shallow plenums, coves or show cases.

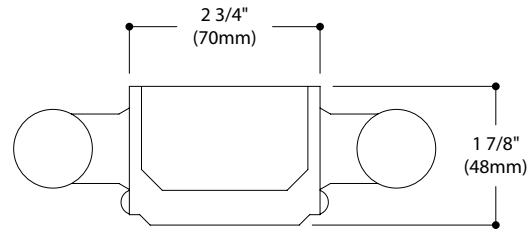
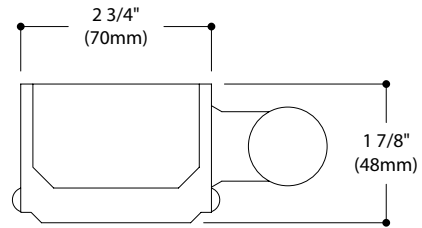
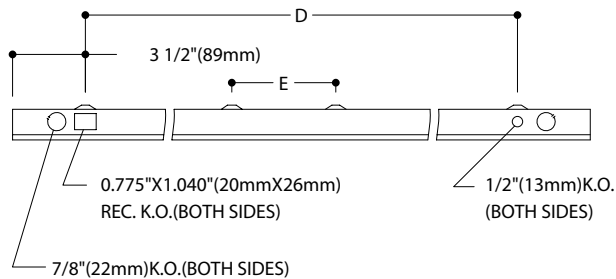


DIMENSIONS

TOP VIEW



SIDE VIEW



NomLength	A	B	C	D	E
48"	48" (1219mm)	45" (1143mm)	23" (584mm)	41" (1041mm)	5" (127mm)
36"	36" (914mm)	33" (838mm)	N/A	29" (737mm)	N/A
24"	24" (610mm)	21" (533mm)	N/A	17" (432mm)	N/A

FIXTURE TYPE _____ VOLTS _____

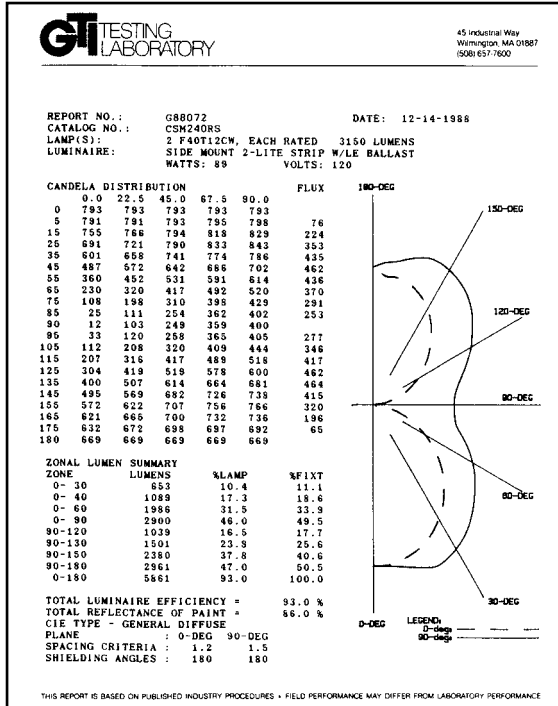
JOB INFORMATION: _____

CSM SERIES

SIDEMOUNT STRIP

2-3/4" CHANNEL WIDTH, 24", 36", 48" LENGTHS

PHOTOMETRY



MODEL NO. CSM4232HPF120SO

coefficients of utilization — zonal cavity method

RF	20			20			20			
	RC	80	50	50	30	10	50	30	10	
RW	70	50	30	50	30	10	50	30	10	
room cavity ratio	1	90	85	81	66	63	61	54	53	51
	2	81	74	68	57	53	50	47	44	42
	3	74	65	58	50	46	42	42	38	35
	4	68	57	49	45	39	35	37	33	30
	5	62	50	42	39	34	30	33	28	25
	6	57	45	37	35	30	26	29	25	22
	7	52	40	33	32	26	22	26	22	19
	8	48	36	29	28	23	19	24	19	16
	9	44	33	25	26	20	17	21	17	14
	10	41	30	23	23	18	15	19	15	12

ORDERING INFORMATION Explanation of Catalogue Number Example: CSM4232HPF120SO

CSM	4	2	32	HPF	120	SO	
SIDEMOUNT STRIP: 2-3/4" Wide Channel	LUMINAIRE LENGTH: 2=2' 3=3' 4=4'	NUMBER OF LAMPS IN WIDTH: 1 or 2 Lamps	LAMP/FIXTURE LENGTH/WATT: Nominal 24" 17=17W T8 20=20W T12 Nominal 36" 25=25W T8 30=30W T12 Nominal 48" 32=32W T8 34=34W T12	BALLAST TYPE: HPF=High Power Factor	VOLTAGE: 120, 277 347	BALLAST TYPE: Mag. T12 Energy Saving 1 or 2 Lamp Elect. T8	OPTIONS: Add appropriate suffix to catalog no.

OPTIONS/ACCESSORIES

RADIO INTERFERENCE FILTER: 120, 277 or 347 volt, 50 or 60 Hz. SUFFIX: R.
BALLAST OPTIONS: For other ballast options, consult ballast specification sheet (folio BA-1-02)

SPECIFICATIONS:

MATERIALS: Chassis parts are die-formed code gauge cold rolled steel, 1-7/8" deep, 2-3/4" channel width.
BALLAST COVER: Code gauge cold rolled steel, snap-on type without fasteners.
FINISH: Chassis exterior baked white polyester enamel. Phosphate undercoating. 84% minimum reflectivity.

ELECTRICAL: Rapid start HPF, thermally protected class "P" ballast C.B.M. certified by E.T.L. If K.O. is within 3" of ballast, use wire suitable for at least 90°.
LABELS: Listed by CSA.

We reserve the right to change, materials and finish in any way that will not alter installed appearance or reduce function and performance.

FLUORESCENT

CANLITE

525 EDUCATION RD., CORNWALL, ONTARIO K6H 6C7
TEL.: (613) 938-6221 • FAX: (613) 938-0961