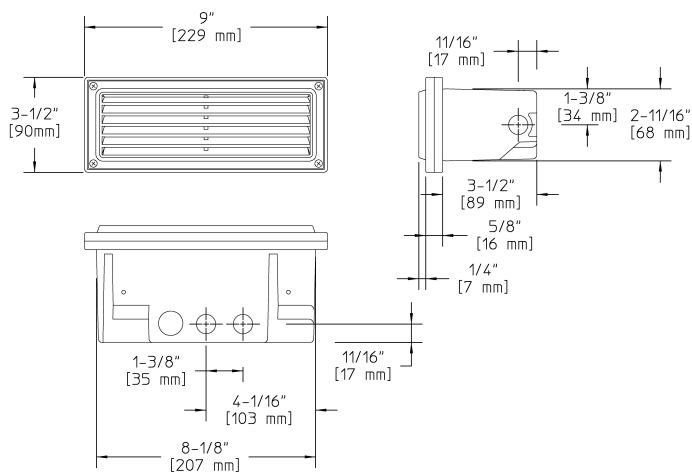


RSCL2_K5812 Specification Sheet

Project Name:	Location:	MFG: Philips Hadco
Fixture Type:	Catalog No.:	Qty:



Ordering Guide

Example: RSCL2_K5812 P A

Product Code	RSCL2_K5812	
Finish	A	Black
	B	White
	H	Bronze
	N	Natural Brass
Thermal Protection	P	Thermal Protection Device *1

*1 Thermal protection device is required for installations in drywall, plaster, "P" to the catalog number to order.

Specifications

HOUSING:
Aluminum parts have zinc-rich primer and thermoset powdercoat for durability. Faceplates are color-impregnated. Die-cast aluminum back box contains less than 0.3% copper to prevent corrosion in concrete or masonry applications. Die-cast aluminum trim contains less than 0.3% copper to resist corrosion. (Note: Flange not included with CB100 fixture.). Thermal Protection device is required for installations in drywall, plaster, wood or other non-masonry materials.

FINISH:
Thermoset polyester powdercoat is electrostatically applied after a five-stage conversion cleaning process and bonded by heat fusion thermosetting. Zinc-rich primer and thermoset powdercoat for durability.

OPTICAL ASSEMBLY:
Horizontal louver lens made of die-cast copper-free aluminum with a 45° cutoff and frosted tempered glass. Cast bronze louver is natural cast bronze with frosted tempered glass.

LAMPING:
Two 18W maximum S-8 (1141) lamps (Single contact bayonet base). Lamp is included with fixture.

ELECTRICAL ASSEMBLY:
Single contact bayonet (S-8). 12 volt fixture is pre-wired with 6-ft. pigtail of 18-2 AWG, 105° C, SPT-1W wire. Low voltage quick connector, catalog #LVC3 included for easy hook-up to the low voltage supply cable, not included. 12 Volt system requires remote transformer, not included.

WARRANTY:
Three-year limited warranty.

CERTIFICATIONS:
ETL listed to U.S. safety standards for wet locations. cETL listed to Canadian safety standards for wet locations. Manufactured to ISO 9001:2008 Standards. ADA Compliant when used in indoor and outdoor wall applications.

Height :
3 1/2" (89mm)

Width:
9" (229mm)

Depth:
4 11/16" (103mm)

Housing Height:
2 11/16" (68mm)

Housing Width:
8 1/8" (207mm)

Max. Weight:
3.86 lb

