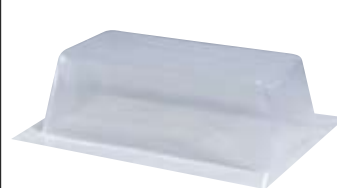
**0089S - 0092S****Mounting Plates**

Provides all the features of the Long Mounting Plate (0092L). Ideal solution for strapped ceilings, as well.

0089S Short mounting plate for the 300 series
3-3/4" aperture

0092S Short mounting plate for the 500 Series
4-1/4" aperture

**VBE300****Vapour Barrier Extender**

For airtight applications using Non-AirSeal® - ready IC Frame-in Kits only. For 24" centre-to-centre joist.

**0098****Mounting Bar Locking Clips**

To lock mounting bars in place after installation. Carton of 12. *Not for use with Lytening and Uniframe mounting bars.*

**1967A - 1967B - 1967C****Extra Thick Ceiling Mounting Ring**

Mounting ring holds reflector snug to ceiling. Can be used with Standard Frame-in Kits where ceilings are up to 2" thick.

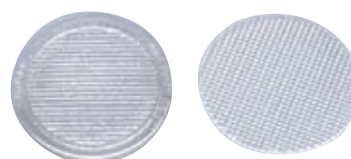
1967A (1100 Series trims)

1967B (1000 Series trims)

1967C (2000 Series trims)

**RP006****Transformer**

Replacement transformer for 302MRX.

**0088SY - 0088AS****Diffusion Special Filters**

0088SY 55° Symmetrical Spread

0088AS 5° x 55°

Asymmetrical Spread

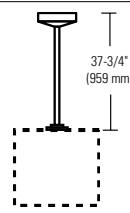
For 378, 379 and 478 Series only.

Note: For all MR16 Lytecaster products using colour lenses and/or specialty filters please refer to Lytespan section, p. 624.

**1954 - 1957****Extra Wide Flange Trim Ring**

1954 For most 1100 Series Reflector Trims. O.D. 8-5/8".

1957 For most 1000 Series Reflector Trims. O.D. 7".

**FA-CSA36-WH/-BK****Stem Kit Accessory**

FA-CSA36-WH White

FA-CSA36-BK Black

For CS1102T Series.

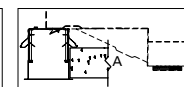
**KIT1136MR - 120V/12V only****Drop Turbo MR16 Kit**

Adapter for easy MR16 integration with Lytecaster Low Profile CFL frames. Complete with wiring, junction box and transformer.

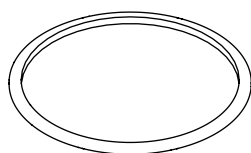
Note: Only for use with Low Profile Drop Turbo, p. 488.

**300XTC - 500XTC****Extra Thick Ceilings**

Part No.	Description	"A" Ceiling Thickness
300XTC	For 300X Series X = 3-3/4" Dia.	Minimum 1" Maximum 2-3/4"
500XTC	For 500X Series X = 4-1/4" Dia.	Minimum 1-1/2" Maximum 3-3/4"



Shown 300XTC + 300MRX

**FA10251-WH****Spacer Ring**

For Multi-Unit Faceplates. Compatible with all Multi-Unit Trims. White.

**300LX****Low Profile Housing**

300LX Low profile housing to be used with 302MRLX only. Total height of 3-3/4".