

# SB NARROW SERIES

## STRIP NARROW 2-3/4" WIDE X 1-5/8" DEEP 18", 24", 36", 48", 72", 96" LENGTHS 1 LAMP IN A LUMINAIRE CROSS-SECTION T8 OR T12 LAMP

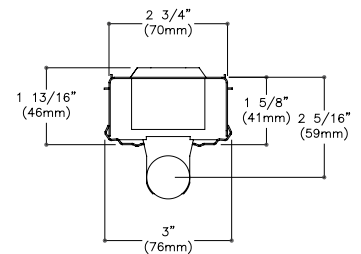
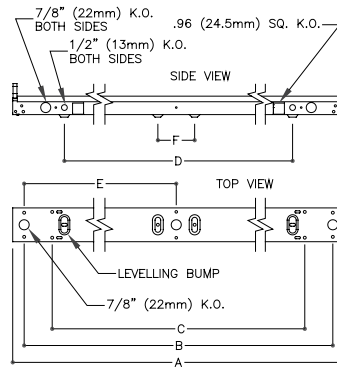
### Features

- Only 2-3/4" wide
- Fully enclosed wiring
- Snap-on ballast cover
- Screwdriver slot for easy ballast cover removal
- Combination end cap for continuous row mounting
- Convenience outlet and switch K.O.s provided
- Optional hangers, wire guards and aligners

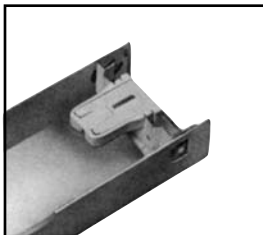


### Dimensions

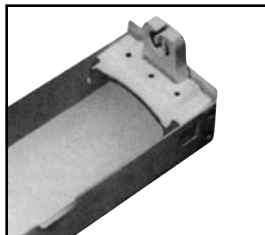
Nom.Length	A	B	C	D	E	F
96"	96" (2438mm)	93 15/16" (2386mm)	89 1/16" (2262mm)	86 15/16" (2208mm)	47" (1194)	3 3/16" (81mm)
72"	72" (1829mm)	59 15/16" (1522mm)	65 1/16" (1653mm)	62 15/16" (1599mm)	35" (889mm)	3 3/16" (81mm)
48"	48" (1219mm)	45 15/16" (1167mm)	41 1/16" (1043mm)	38 15/16" (989mm)	23" (584mm)	3 3/16" (81mm)
36"	36" (914mm)	33 15/16" (862mm)	29 1/16" (738mm)	26 15/16" (684mm)	N/A	N/A
24"	24" (610mm)	21 15/16" (557mm)	17 1/16" (433mm)	14 15/16" (379mm)	N/A	N/A
18"	18" (457mm)	15 15/16" (405mm)	13 1/2" (343mm)	8 15/16" (227mm)	N/A	N/A



### Mounting Methods/Features



Flipstrip - shipping position



Flipstrip - shipping position

### Job Information

### Type:

**Job Name:**

**Cat. No.:**

**Lamp(s):**

**Volts/Ballast:**

C.F.I. FLUORESCENT A CANLYTE BRAND  
525 EDUCATION ROAD, CORNWALL, ONTARIO, CANADA K6H 6C7 - (613) 938-6221  
WE RESERVE THE RIGHT TO CHANGE DETAILS OF DESIGN, MATERIALS AND FINISH.  
© 2006 CANLYTE INC.  
A0902  
www.canlyte.com

FI-0400-06

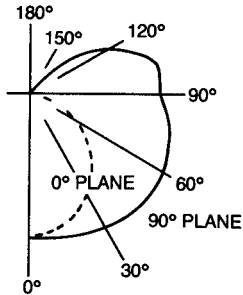
**C.F.I.**  
**FLUORESCENT**

# SB NARROW SERIES

## STRIP NARROW 2-3/4" WIDE X 1-5/8" DEEP 18", 24", 36", 48", 72", 96" LENGTHS 1 LAMP IN A LUMINAIRE CROSS-SECTION T8 OR T12 LAMP

### PHOTOMETRY

REPORT NO: G86118  
 CATALOG NO: SB148120SO  
 LAMP TYPE: 2F40T12/CW  
 LUMENS PER LAMP: 3150  
 TOTAL EFFICIENCY: 89.5%  
 CIE TYPE: Semi-Direct  
 SPACING CRITERIA: 1.6  
 SHIELDING ANGLE: 180



MODEL NO. SB148120LE

coefficients of utilization — zonal cavity method

	RF	20			20			20		
	RC	80			50			30		
	RW	70	50	30	50	30	10	50	30	10
room cavity ratio	1	89	84	79	71	68	64	64	61	58
	2	80	71	64	60	55	51	54	50	48
	3	72	62	53	52	46	41	47	42	38
	4	65	54	45	46	39	34	41	36	31
	5	59	47	39	40	34	28	36	30	26
	6	54	42	33	36	29	24	32	26	22
	7	50	37	29	32	25	21	29	23	19
	8	46	33	25	29	22	18	26	20	16
	9	43	30	22	26	20	15	23	18	14
	10	40	27	20	24	18	13	21	16	12

### Ordering Information Explanation of Catalogue Number Example: SB148-120SO

**SB**

**NARROW STRIP:**  
2-3/4" Wide Channel

**1**

**NUMBER OF LAMPS IN WIDTH:**  
(Tandem)

**48**

**LAMP TYPE:**  
**18**=nominal 18"  
15W T8 or 18W T12  
**24**=nominal 24"  
17W T8 or 20W T12  
**36**=nominal 36"  
25W T8 or 30W T12  
**48**=nominal 48"  
32W T8  
**36T**=nominal 72"  
25W T8 (tandem)  
**48T**=nominal 96"  
32W T8 (tandem)

**BALLAST TYPE:**  
L=Low power factor (18W & 20W T12 only)

**120**

**VOLTAGE:**  
120, 277  
347

**SO**

**BALLAST TYPE:**  
 <20THD† <10THD†  
**SO\*** **RO\*\*** 2 Lamp Elect. T8  
**O4\*** **R4\*\*** 1-4 Lamp Elect. T8  
**PS** --- LOL T8 Dimming  
 \* Instant Start Standard  
 \*\* Rapid Start Standard  
 † % total harmonic distortion

**OPTIONS:**  
Add appropriate suffix to catalog no.

### OPTIONS/ACCESSORIES



STEM AND CANOPY SETS

Suspends luminaire 12", 18", 24", 36", 48" from surface and can be used in conjunction with Heavy Duty Slide Grip Hanger.  
 Catalogue Number:  
 STKF12 (12"), STKF18 (18"),  
 STKF24 (24"), STKF36 (36"),  
 STKF48 (48").



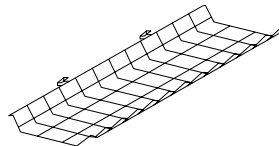
CANOPY SPACER (1-1/2")

Suspends luminaire approximately 1-1/2" from surface.  
 Catalogue Number: STSK



CHAIN HANGER KIT

Two 24" heavy duty link chains with sturdy "V" hooks that grip luminaires at four knockout points for level suspension.  
 Catalogue Number: EE9HC



WIRE GUARDS

Hinge and latch positive-lock construction, complete with longitudinal and transverse struts for secure protection.  
 Cat. Number Luminaire  
 SB8G1-24 SB124  
 SB8G1-36 SB136  
 SB8G1-48 SB148, SB148T (order 2)

**BALLAST OPTIONS:** For other ballast options, consult ballast specification sheet (folio BA-1-02)

### SPECIFICATIONS

**MATERIALS:** Chassis parts are die-formed code gauge cold rolled steel, 1-5/8" deep, 2-5/8" channel width.

**LAMP HOLDERS:** Mounted to flip-up socket bridge which can be flipped up from the horizontal (shipping position) to the vertical (installation) position with 4 screws.

**BALLAST COVER:** Snap-on type without fasteners. Screwdriver slots are to be provided in housing for easy removal of ballast cover.

**FINISH:** Chassis exterior phosphate undercoating, baked white polyester enamel.

**ELECTRICAL:** Rapid start HPF, thermally protected class "P" ballast C.B.M. certified by E.T.L. If K.O. is within 3" of ballast, use wire suitable for at least 90°.

**LABELS:** Listed by CSA.

### Job Information

### Type:

C.F.I. FLUORESCENT A CANLYTE BRAND  
 525 EDUCATION ROAD, CORNWALL, ONTARIO, CANADA K6H 6C7 - (613) 938-6221  
 WE RESERVE THE RIGHT TO CHANGE DETAILS OF DESIGN, MATERIALS AND FINISH.  
 © 2006 CANLYTE INC.  
 A0902  
 www.canlyte.com

**C.F.I. FLUORESCENT**