

CATALOG NO. _____

TYPE NO. _____

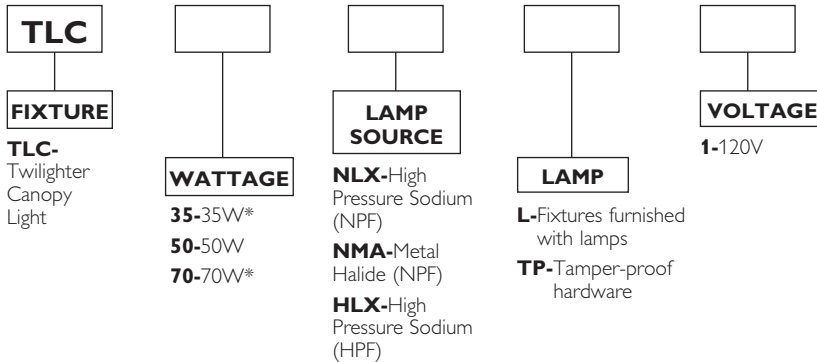
JOB NAME _____

TLC Twilghter Series Canopy Light



ORDERING INFORMATION

Catalog Number: Example: TLC50NLXL-1



*35W, 70W Available in High Pressure Sodium only.

ACCESSORIES

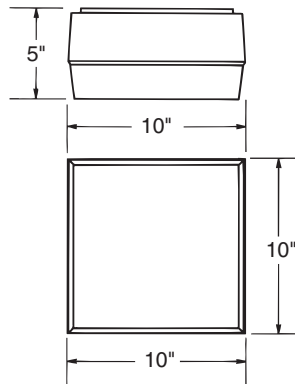
TLC552-Replacement kit.

TECHNICAL INFORMATION

TLC units are supplied with lamp. High Pressure sodium fixtures require medium base E17 lamp. Metal Halide units use medium base ED17 lamp.

High Pressure Sodium start temp = -40°F

Metal Halide start temp = -20°F



1.4 Spacing Ratio

PRODUCT SPECIFICATIONS

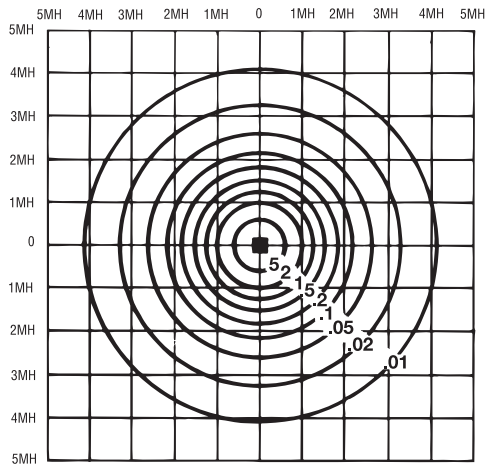
- TLC Canopy lights are designed for use under eaves, canopies, enclosed entrance ways or along covered walkways.
- Pressure formed glass filled polyester housing finished in architectural dark bronze.
- HID units equipped with deluxe porcelain 4KV socket.
- UV Stabilized polycarbonate prismatic refractor provides Type V distribution.
- Electrical components mounted to metal plate for effective heat transfer.



UL Wet Location Listed.
UL File Number: E86021

TLC Twilighter Series

PHOTOMETRICS



TLC50NLXL
LAMP: 50W HPS
MOUNTING HGT.: 10'

FOOTCANDLE CORRECTION

Different Lamps/Watts

Multiply the following factors times the footcandle values for changes in mounting height.

35W HPS	.56
70W HPS	1.53
50MAL	.59

Different Mounting Height

Multiply the following factors times the footcandle values for changes in mounting height.

To Change from 10'				
New Height	8'	10'	12'	14'
Factor	1.56	1.0	.69	.51

SUGGESTED SPECIFICATIONS

- Fixture shall be constructed of vandal-resistant polycarbonate, finished in architectural dark bronze with a clear prismatic refractor.
- Fixture shall be UL listed for wet locations.
- HID fixtures shall be supplied with premium porcelain sockets, pulse-rated for 4KV and equipped with Normal Power Factor ballast for 120 volt input. High Power Factor ballast available. Electrical components are mounted to die-cast plate for effective heat transfer.
- HID fixtures shall be supplied with 35, 50 or 70 watt lamp as specified. Compact fluorescent units shall be supplied with 28W PLC lamp.
- Fixture optics shall be constructed of UV stabilized polycarbonate for Type V distribution.
- Fixture shall ceiling mount directly to recessed splice box.



© 2013 Koninklijke Philips Electronics N.V. All rights reserved.
Specifications are subject to change without notice.
www.philips.com/luminaires

05/13

Philips Lighting Company
200 Franklin Square Drive
Somerset, NJ 08873
Phone: 855-486-2216

Philips Lighting Company
281 Hillmount Road
Markham ON, Canada L6C 2S3
Phone: 800-668-9008