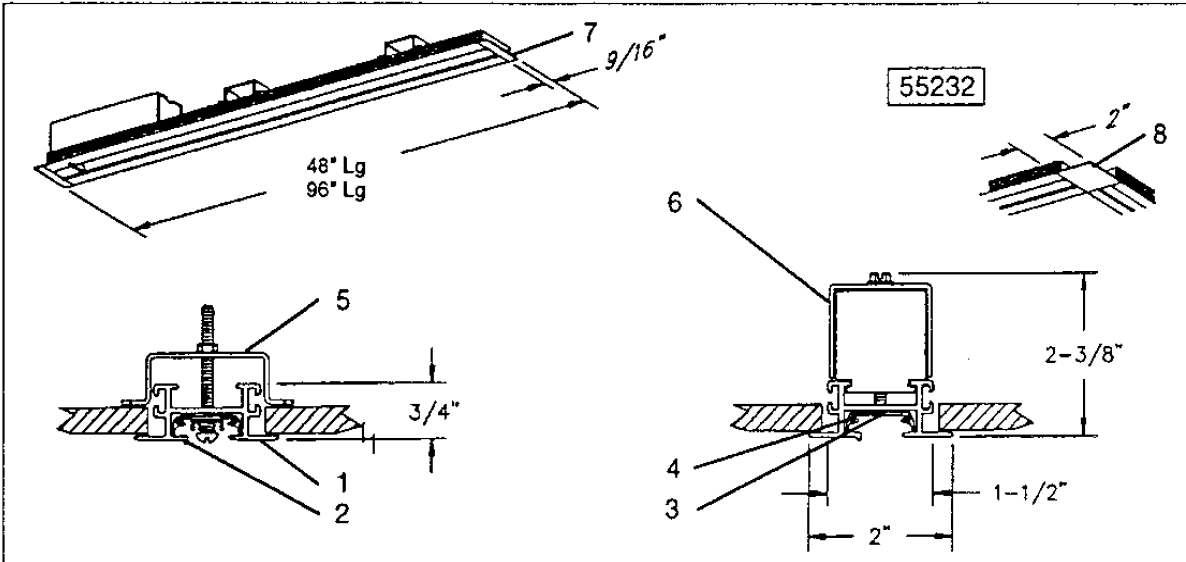


**LYTESPAN  
TRACK LIGHTING SYSTEM** **55230**



Ceiling opening: 1 5/8"

Ordering Information		
Cat. No.	Description	Finish
55230WH	4' recessed track	WHITE
55231WH	8' recessed track	
55232WH	Corner plate for rectangular patterns	

**FEATURES**

- 1- BASIC RECESSED TRACK: extruded aluminum .075" wall asymmetric designs keys polarity.
- 2- POLARITY BEAD: identifies the neutral conductor.
- 3- INSULATING LINER: extruded thermoplastic .032" minimum thickness throughout.
- 4- CONDUCTORS: # 12 ga. solid copper.
- 5- MOUNTING BRACKETS: galvanised steel, furnished with track units: 4' = 2 supports 8' = 3 supports.
- 6- JUNCTION BOX: galvanised steel.
- 7- END CAP: die-cast aluminum.
- 8- PLATE: extruded aluminum.

**ELECTRICAL**

Capacity; 10 amps at 120V per branch circuit (1200 W incandescent load). Track units are polarized and continuously grounded throughout. Lighting elements specifically designed for these track units as well as pendant adapters can be attached at any point along the track.

**MECHANICAL**

MECHANICAL: recessed track can be mounted flush on smooth surface to give a clean, trim look. Track can also be cut to length.

**FINISH**

FINISH: all painted finished baked enamel.

**LABELS**

LABELS: CSA

**LIGHTOLIER®**

WE RESERVE THE RIGHT TO CHANGE DETAILS OF DESIGN, MATERIALS AND FINISH, IN ANY WAY THAT WILL NOT ALTER INSTALLED APPEARANCE OR REDUCE FUNCTION AND PERFORMANCE.

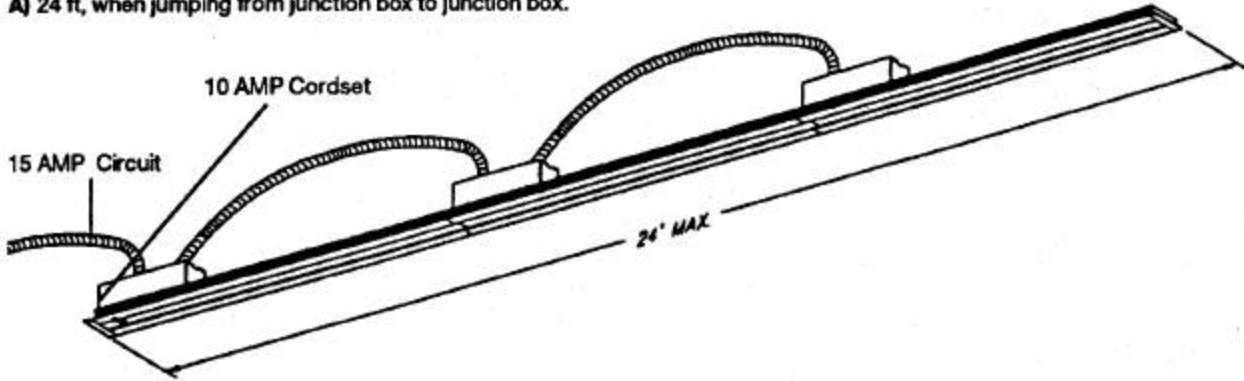
55230

LYTESPAN  
TRACK LIGHTING SYSTEM

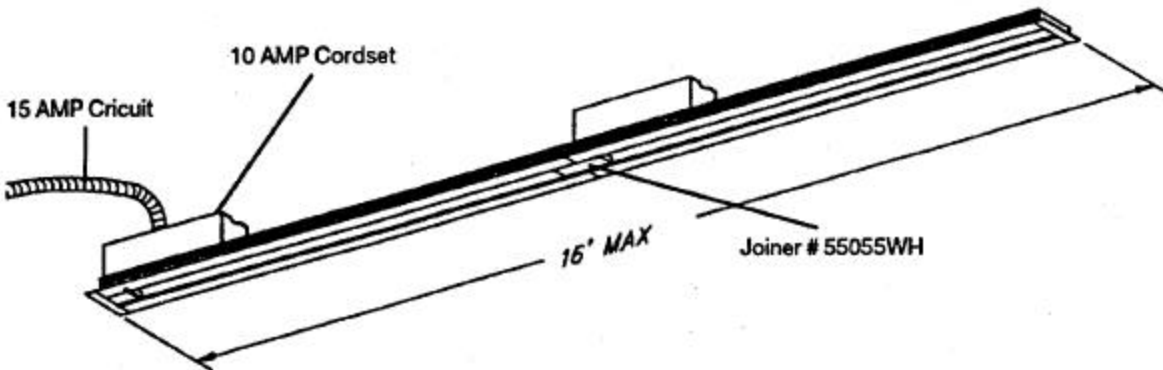
PATTERNS

**MAXIMUM LENGTH PER CIRCUIT**

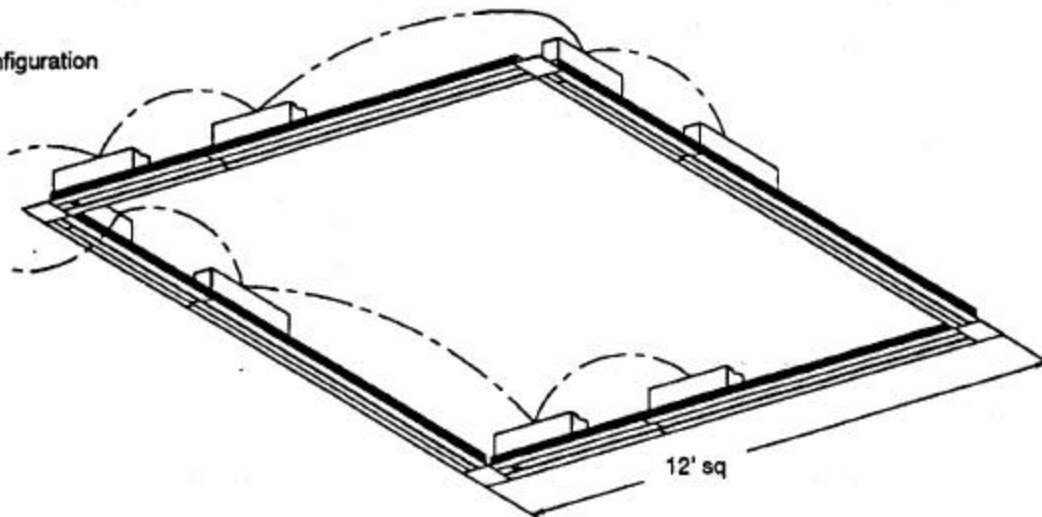
A) 24 ft, when jumping from junction box to junction box.



B) 16 ft, when using joiner connector # 55055WH



C) Typical configuration



**LIGHTOLIER®**