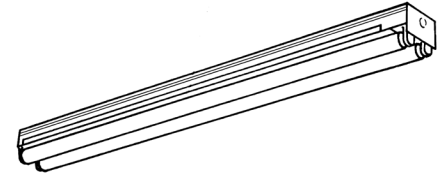


Strip Luminaire

TH High Output Strip  
1 or 2 Lamp High Output  
T8 (380 mA) or T12 (800 mA)



Specifier's Reference

Project
Type
Model No.
Comments

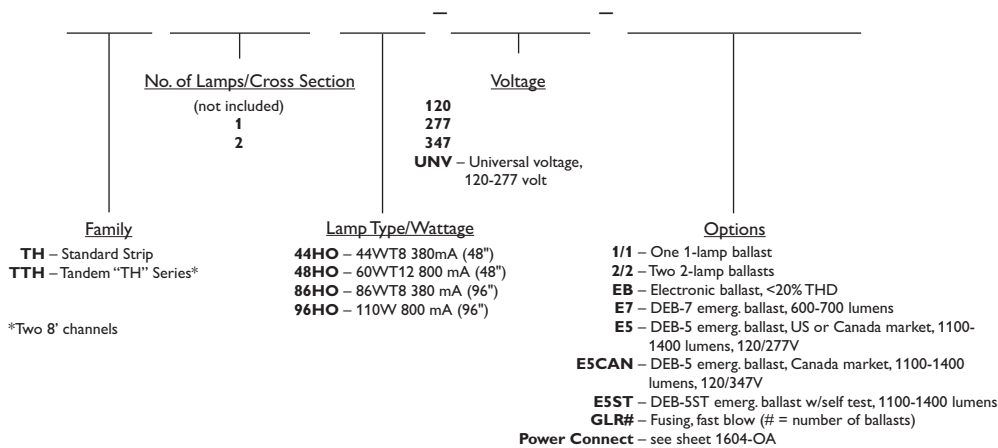
construction/finish

- Suitable for unit, row, or suspension mounting.
- Multiple knockouts for convenient installation.
- Heavy duty industrial-type channel of code gauge die formed steel.
- Channel and cover include added forms for extra strength and rigidity.
- High reflectance white baked enamel finish.
- Quarter turn latch secures channel cover for easy wireway access.
- Standard end cap acts as coupler for continuous row mounting. Heavy Duty Coupler (cat. #TC-2) is available.
- See sheet 1119-S for available strip reflectors.

electrical

- cULus listed for damp locations.
- Self-contained fluorescent emergency power packs can be incorporated, listed for dry locations.
- Pressure lock lampholders secured by snap-in socket plates.
- Green grounding screw installed in channel.
- Lampholders may be individually replaced or rewired.
- Philips Day-Brite's standard luminaires for high output T8 (380mA) and T12 (800mA) applications include ballasts rated for -20° F starting temperature.

Green Choice: TH286HO-UNV-1/2-EB



\*Two 8' channels

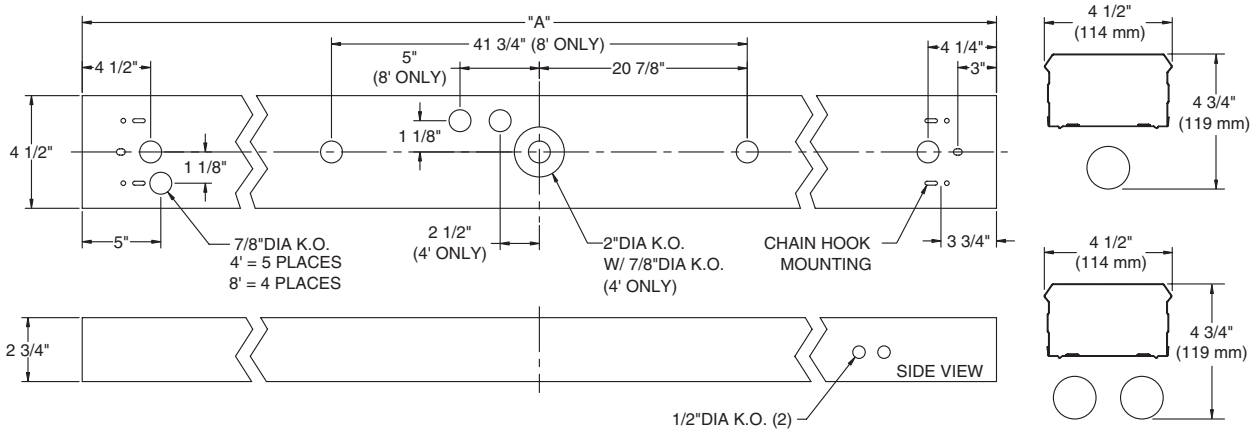
Accessories

- CS-400 – rigid canopy
- CS-500 – swivel canopy
- CEN-600 – swivel canopy with leveler
- CS Series Stems
  - TC-2 – heavy duty coupler
  - TH-5 – sliding hanger
  - FKR-126 – chain hanger set
  - CG-4 – wireguard (4')



dimensions

DIM "A"		
4' Channel	(1219mm)	48"
8' Channel	(2438mm)	96"



photometry

TH Strip, 4' 2 Lamp 110W T12 ES

Efficiency – 97.1%

LER – 94

TER – 51

Catalog No.	TH296HO-1/2-EB	Candlepower				Light Distribution				Average Luminance					
		Angle	End	45	Cross	Degrees	Lumens	% Lamp	% Luminaire	Angle	End	45°	Cross		
Test No.	10973	0	3029	3029	3029	0-30	2502	15.6	16.1	45	11569	11885	12633		
S/MH	1.6	5	3035	3033	3029	0-40	4264	26.7	27.4	55	10789	11918	12756		
Lamp Type	F96T12HOES	15	2932	3014	3091	0-60	8315	52.0	53.5	65	9714	11634	12441		
Lumens/Lamp	8000	25	2724	2961	3152	0-90	12735	79.6	82.0	75	8540	10991	12423		
Ballast Factor	1.00	35	2423	2850	3148	90-180	2802	17.5	18.0	85	8088	11903	12650		
Input Watts	165	45	2039	2659	3054	0-180	15536	97.1	100.0						
		55	1553	2371	2804	<b>Coefficients of Utilization</b>									
		65	1042	1956	2379	<b>EFFECTIVE FLOOR CAVITY REFLECTANCE 20 PER (pfc=0.20)</b>									
		75	575	1453	1948	pcc	80			70			50		
		85	205	1098	1488	pw	70	50	30	70	50	30	50	30	
		95	37	897	1342	RCR									
		105	1	734	1186	0	111	111	111	107	107	107	97	97	
		115	1	550	987	1	98	93	88	93	89	83	81	78	
		125	1	414	739	2	89	79	71	83	76	68	69	64	
		135	1	290	531	3	80	68	59	76	66	57	59	54	
		145	1	169	347	4	72	59	51	68	57	48	53	46	
		155	1	79	190	5	67	53	44	63	51	41	46	40	
		165	1	29	52	6	60	47	38	57	46	36	41	34	
		175	1	13	20	7	56	42	34	54	40	33	38	30	
						8	52	39	29	50	36	28	34	28	
						9	48	34	27	46	34	26	32	25	
						10	46	33	25	44	30	23	28	23	



Some luminaires use fluorescent or high intensity discharge (HID) lamps that contain small amounts of mercury. Such lamps are labeled, "Contain Mercury" and/or the symbol "HG". Lamps that contain mercury must be disposed of in accordance with local requirements. Information regarding lamp recycling and disposal can be found at [www.lamprecycle.org](http://www.lamprecycle.org)



© 2014 Koninklijke Philips N.V. All rights reserved. Specifications are subject to change without notice. [www.philips.com/luminaires](http://www.philips.com/luminaires)

Philips Lighting  
North America Corporation  
200 Franklin Square Drive  
Somerset, NJ 08873  
Phone: 855-486-2216

Philips Lighting Company  
281 Hillmount Road  
Markham ON, Canada L6C 2S3  
Phone: 800-668-9008