

IA/IS

All Purpose Industrial



All-Purpose Industrial is an industrial luminaire available with or without uplight, at an economical price.

Features

- Reflectors feature reinforcing forms and are painted with high reflectance baked white enamel finish.
- Heavy-duty channel of code gauge die-formed steel with baked white enamel finish.
- Reflectors are easily installed and have uplight construction standard. Solid top reflectors are optional.
- Housing is multi-stage phosphate treated for maximum corrosion resistance and finish coat is high reflectance baked white enamel.
- Combination end cap/coupler requires no tools for installation.
- 32W and Slimline units are UL Listed for direct mounting on low density ceilings.
- UL listed for damp locations. Units incorporating emergency ballasts UL listed for dry locations.
- High output 380mA (44HO, 86HO), high output 800mA (48HO, 96HO) and very high output 1500mA (48VH, 96VH) models come standard with -20°F start ballast where available.

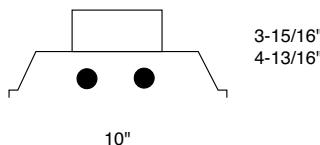
Product Availability

| Size | Family | Lamps/ Cross Section | Lamps/ Luminaire | Lamp Type | Length in. (mm) | Width in. (mm) | Height in. (mm) |
|------|----------|-------------------------|---------------------|------------------|--------------------|-------------------|--------------------|
| 4' | IA, IS | 1, 2 | 1, 2 | 28, 32, 48, 54HO | 48" (1219) | 10" (254) | 3-15/16" (100) |
| | | 1, 2 | 1, 2 | 44HO, 48HO, 48VH | 48" (1219) | 10" (254) | 4-13/16" (122) |
| 8' | TIA, TIS | 1, 2 | 2, 4 | 28, 32, 54HO | 96" (2438) | 10" (254) | 3-15/16" (100) |
| 8' | IA, IS | 1, 2 | 1, 2 | 59, 96 | 96" (2438) | 10" (254) | 3-15/16" (100) |
| | | 1, 2 | 1, 2 | 86HO, 96HO, 96VH | 96" (2438) | 10" (254) | 4-13/16" (122) |

Accessories

- 5988W/5977W** – Hydee hangers (4' models)
- CS-400** – Rigid stem canopy
- CS-500** – Swivel stem canopy
- CS Series Stems**
- CTBH-1** – T-bar sliding hanger, flush mount
- CTBH-2** – T-bar sliding hanger, 1-1/2" spacing except T12HO/VHO
- CTBH-3** – T-bar sliding hanger, 1-1/2" spacing for T12HO/VHO
- FKR-126** – Chain hanger set
- N-3380/3381** – Universal joint aligner, octagonal box, 1/2" / 3/4" I.P.S.
- N-3385** – Universal joint aligner, square box, 1/2" I.P.S.
- TH-1** – Sliding hanger, flush mounting
- TH-2** – Sliding hanger, 1-1/2" spacing except T12HO/VHO
- TH-4** – Sliding hanger, 1-1/2" spacing for T12HO/VHO
- TC-1** – Heavy duty coupler

Dimensions



Green Product Choice: IA232-UNV-1/2-EBLHE*

| Family | Lamp Type/Wattage | Options |
|---|------------------------------------|--|
| IA – Industrial w/uplight | 28 – 28WT5 (46") | 1/1 – One 1-lamp ballast |
| IAC – Canadian Version | 32 – 32WT8 (48") | 1/2 – One 2-lamp ballast |
| TIA – Tandem Version | 48 – 38WT12 Slimline (48") | 1/4 – One 4-lamp ballast |
| TIAC – Tandem Canadian Version | 44HO – 44WT8 380mA (48") | 2/2 – Two 2-lamp ballasts |
| IS – Solid Top Model | 48HO – 60WT12 800mA (48") | EB – Electronic ballast, <20% THD |
| ISC – Solid Top Canadian Version | 48VH – 110WT12 1500mA (48") | EBH – T8 high ballast factor electronic ballast (F32T8 only) |
| TIS – Tandem Solid Top Model | 54HO – 54WT5HO (46") | EB101 – T8 electronic ballast, instant start, <10% THD |
| TISC – Tandem Solid Top Canadian Version | 59 – 59WT8 (96") | EB10R – Electronic ballast, program rapid start, <10% THD |
| | 96 – 75WT12 Slimline (96") | EBHE – F32T8 electronic ballast, high efficiency, std. ballast factor |
| | 86HO – 86WT8 380mA (96") | EBLHE – F32T8 electronic ballast, high efficiency, low ballast factor |
| | 96HO – 110WT12 800mA (96") | EBHHE – F32T8 electronic ballast, high efficiency, high ballast factor |
| | 96VH – 215WT12 1500mA (96") | EBSD – T8 electronic ballast, step dimming, std. (.88) ballast factor |
| | | EBD – Electronic dimming ballast |
| | | ESNOLP – Electronic ballast for energy saving (25/28/30W) T8 lamps, use when lamps are not specified with the luminaire |
| | | EB95 – 28WT5 electronic ballast, .95 ballast factor |
| | | EB115 – 28WT5 electronic ballast, 1.15 ballast factor |
| | | E1 – DEB-1 emerg. ballast, 350-450 lumens |
| | | E7 – DEB-7 emerg. ballast, 600-700 lumens |
| | | E5 – DEB-5 emerg. ballast, 1100-1400 lumens |
| | | ES5T – DEB-5ST emerg. ballast w/self test, 1100-1400 lumens |
| | | E7LP – DEB-7LP emerg. ballast, T8/T5/T5HO, 600-700 lumens |
| | | E6LP – DEB-6LP emerg. ballast, T8/T5/T5HO, 1250 lumens |
| | | GLR# – Fusing, fast blow (# = number of ballasts) |
| | | LT – Low temperature (0°F) start ballast (standard on F32T8, HO, VHO) |
| | | Power-Connect modular wiring – See p. 171. |

See p. 168-169 for mounting information and 170-176 for option info.
See p. 186-189 for ballast and lamp info.