

Maximum versatility, highly efficient and simple to use.

SB SERIES NARROW STRIP



NARROW STRIP 2¾" WIDTH, 1⅝" DEPTH,
18", 24", 36", 48", 72", 96" LENGTHS
1 LAMP IN A LUMINAIRE CROSS-SECTION T8 OR T12 LAMP

Lightolier's T8 and T12 Narrow Strip profiles are for strip lighting applications that need shallow and narrow widths. These strips are available in different lengths and lamp configurations to suit your needs.

Project: _____
 Location: _____
 Catalog No: _____
 Fixture Type: _____
 Mfg: _____ Lamps: _____ Qty: _____
 Notes: _____

Ordering Guide

Explanation of Catalog Number Example: SB148-120SO

Narrow Strip	No. of Lamps in Width	Lamp Type	Ballast Type	Voltage	Ballast Type	Options
<input type="checkbox"/> SB	<input type="checkbox"/> 1	<input type="checkbox"/>	<input type="checkbox"/> L	<input type="checkbox"/>	<input type="checkbox"/>	<input type="checkbox"/>
2¾" wide channel	Tandem	18 = nominal 18" 15W T8 or 18W T12 24 = nominal 24" 17W T8 or 20W T12 36 = nominal 36" 25W T8 or 30W T12 48 = nominal 48" 32W T8 36T = nominal 72" 25W T8 (tandem) 48T = nominal 96" 32W T8 (tandem)	L = Low power factor (18W & 20W T12 only)	120, 277, 347V	<20THD <10THD SO* RO** 2 Lamp Elec. T8 O4* R4** 1-4 Lamp Elec. T8 PS — LOL T8 Dimming * Instant Start Standard ** Rapid Start Standard	Add appropriate suffix to catalog No.

SB SERIES NARROW STRIP

Features

- Only 2 3/4" wide.
- Fully enclosed wiring.
- Snap-on ballast cover.
- Screwdriver slot for easy ballast cover removal.
- Combination end cap for continuous row mounting.
- Convenience outlet and switch K.O.s provided.
- Optional hangers, wire guards and aligners.

Specifications

Materials: Chassis parts are die-formed code gauge cold rolled steel, 1 5/8" deep, 2 5/8" channel width.

Lampholders: Mounted to flip-up socket bridge which can be flipped up from the horizontal (shipping position) to the vertical (installation) position with 4 screws.

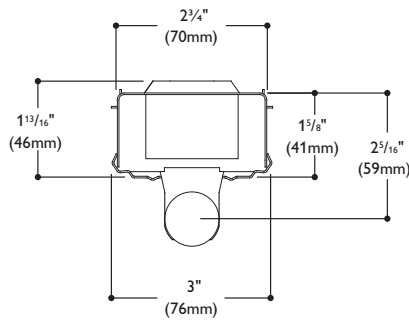
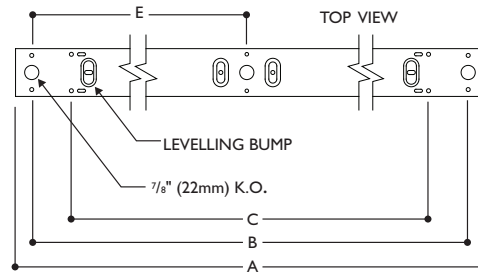
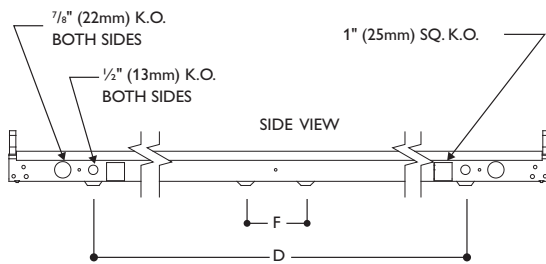
Ballast Cover: Snap-on type without fasteners. Screwdriver slots are to be provided in housing for easy removal of ballast cover.

Finish: Chassis exterior phosphate undercoating, baked white polyester enamel.

Electrical: Rapid start HPF, thermally protected class "P" ballast C.B.M. certified by E.T.L. If K.O. is within 3" of ballast, use wire suitable for at least 90°.

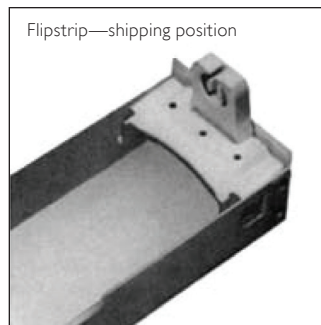
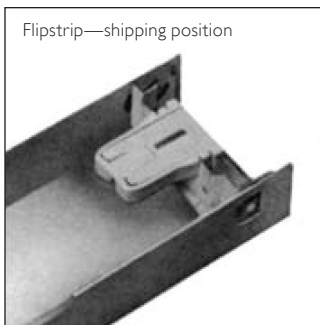
Labels: Listed by CSA.

Dimensions



Nominal Length	A	B	C	D	E	F
96"	96" (2438mm)	93 15/16" (2386mm)	89 1/16" (2262mm)	86 15/16" (2208mm)	47" (1194mm)	3 3/16" (81mm)
72"	72" (1829mm)	59 15/16" (1522mm)	65 1/16" (1653mm)	62 15/16" (1599mm)	35" (889mm)	3 3/16" (81mm)
48"	48" (1219mm)	45 15/16" (1167mm)	41 1/16" (1043mm)	38 15/16" (989mm)	23" (584mm)	3 3/16" (81mm)
36"	36" (914mm)	33 15/16" (862mm)	29 1/16" (738mm)	26 15/16" (684mm)	N/A	N/A
24"	24" (610mm)	21 15/16" (557mm)	17 1/16" (433mm)	14 15/16" (379mm)	N/A	N/A
18"	18" (457mm)	15 15/16" (405mm)	13 1/2" (343mm)	8 15/16" (227mm)	N/A	N/A

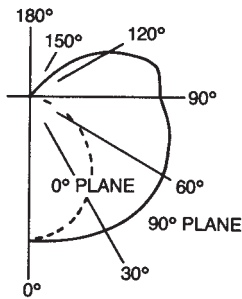
Mounting Methods/Features



SB SERIES NARROW STRIP

Photometry—Model No. SB148120LE

Report Number: G86118
 Catalog No: SB148120SO
 Lamp Type: 2F40T12/CW
 Lumens per Lamp: 3150
 Total Efficiency: 89.5%
 CIE Type: Semi-Direct
 Spacing Criteria: 1.6
 Shielding Angles: 180



Coefficients of Utilization

RF	20%			20%			20%		
RC	80%			50%			30%		
RW	70	50	30	50	30	10	50	30	10
RCR	Zonal cavity method								
1	89	84	79	71	68	64	64	61	58
2	80	71	64	60	55	51	54	50	48
3	72	62	53	52	46	41	47	42	38
4	65	54	45	46	39	34	41	36	31
5	59	47	39	40	34	28	36	30	26
6	54	42	33	36	29	24	32	26	22
7	50	37	29	32	25	21	29	23	19
8	46	33	25	29	22	18	26	20	16
9	43	30	22	26	20	15	23	18	14
10	40	27	20	24	18	13	21	16	12

Options/Accessories



Stem and Canopy Sets:

Suspends luminaire 12", 18", 24", 36", 48" from surface and can be used in conjunction with Heavy Duty Slide Grip Hanger.

Catalog Number:

STKF12 (12"), **STKF18** (18"),
STKF24 (24"), **STKF36** (36"),
STKF48 (48").



Canopy Spacer:

Suspends luminaire approximately 1½" from surface.

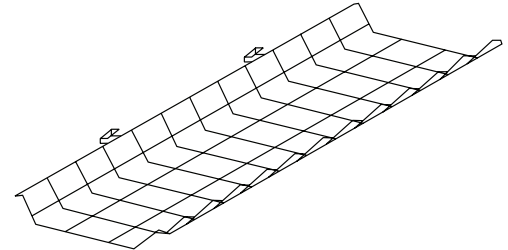
Catalog Number: **STSK**



Chain Hanger Kit:

Two 24" heavy duty link chains with sturdy "V" hooks that grip luminaires at four knockout points for level suspension.

Catalog Number: **EE9HC**



Wire Guards:

Hinge and latch positive-lock construction, complete with longitudinal and transverse struts for secure protection.

Catalog Number Luminaire

SB8G1-24 SB124

SB8G1-36 SB136

SB8G1-48 SB148, SB148T (order 2)



© 2013 Koninklijke Philips N.V. All rights reserved.
 Specifications are subject to change without notice.
www.philips.com/luminaires

Philips Lighting Company
 200 Franklin Square Drive
 Somerset, NJ 08873
 Phone: 855-486-2216

Philips Lighting Company
 281 Hillmount Road
 Markham ON, Canada L6C 2S3
 Phone: 800-668-9008