



LED InstantFit Lamps

10T8/48-3500 IF 10/1

Philips LED T8 InstantFit Lamps are an ideal energy saving choice for existing linear fluorescent fixtures.

Product data

General Information		Voltage (Nom)	
Cap-Base	G13 [Medium Bi-Pin Fluorescent]	120-277, 347 V	
Main Application	Industrial	Temperature	
Nominal Lifetime (Nom)	50000 h	T-Ambient (Max)	45 °C
Switching Cycle	50000X	T-Ambient (Min)	-20 °C
B50L70	50000 h	T-Storage (Max)	65 °C
		T-Storage (Min)	-40 °C
		T-Case Maximum (Nom)	40 °C
Light Technical		Controls and Dimming	
Color Code	835 [CCT of 3500K]	Dimmable	No
Initial lumen (Nom)	1500 lm	Mechanical and Housing	
Luminous Flux (Rated) (Nom)	1500 lm	Product Length	1200 mm
Correlated Color Temperature (Nom)	3500 K	Approval and Application	
Color Consistency	<6	DesignLights Consortium Qualified Product List	DesignLights Consortium Qualified Product List
Color Rendering Index (Nom)	82	Energy Saving Product	Yes
LLMF At End Of Nominal Lifetime (Nom)	70 %	Suitable For Accent Lighting	No
Operating and Electrical		Energy Efficiency Label (EEL)	Not applicable
Input Frequency	50 to 60 Hz	Approbation Marks	UL certificate RoHS compliance
Power (Rated) (Nom)	10 W	Energy Consumption kWh/1000 h	- kWh
Lamp Current (Nom)	140 mA		
Starting Time (Nom)	0.5 s		
Warm Up Time To 60% Light (Nom)	0.5 s		
Power Factor (Nom)	0.9		

LED InstantFit Lamps

Product Data

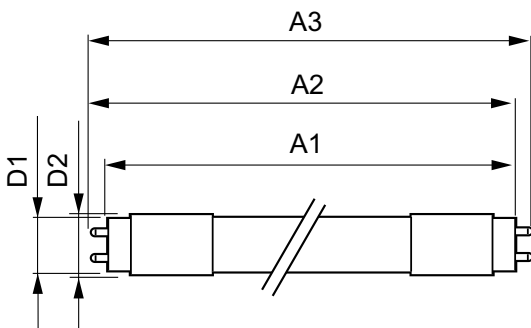
Order product name	10T8/48-3500 IF 10/1
EAN/UPC - Product	046677472207
Order code	468272
Numerator - Quantity Per Pack	1

Numerator - Packs per outer box	10
Material Nr. (12NC)	929001124064
Net Weight (Piece)	0.230 kg

Warnings and Safety

- Perform a visual inspection to ensure lamp holders (or sockets) are not damaged or loose. If the lamp holders (or sockets) are damaged, corroded, charred, blackened or loose, contact a qualified electrician for proper replacement.
- Please refer to the ballast compatibility guide located at www.philips.com/instantfit.

Dimensional drawing



LEDtube 1200mm 12W G13/835

Product	D1	D2	A1	A2	A3
10T8/48-3500 IF 10/1	25.68 mm	28 mm	1198.0 mm	1205.0 mm	1212.0 mm

Photometric data

