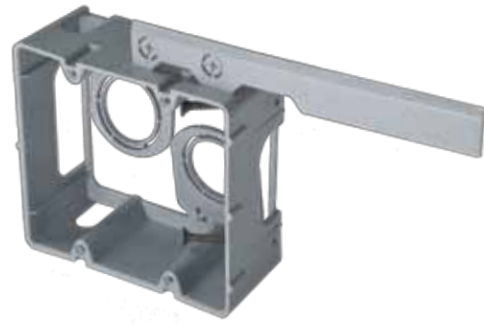


Low Voltage Boxes



SBCLV1G



SBCLV2G

SBC Low Voltage (LV) Data Rings

New wire and rewire compatible.
Adjustable rise is built in.
LV1G and LV2G data rings have hinged conduit adapters (3/4" & 1").

How Smart? *This SMART!*

All Smart Boxes:

- Mount internally
- Are rewire capable
- Are new wire capable
- Are adjustable depth
- Include mounting screws already in position
- Have big cubic inches - the biggest in the industry
- Are securely stud mounted in old or new work

SMART BOX™

THE NAME SAYS IT ALL

Multi-Mount Device Boxes

All Smart Box Products Mount Internally • Wall dividers are available for the (2) through (6) gang boxes for line voltage / low voltage separation. Horizontal and vertical mounting capabilities are provided with (2) through (6) gang boxes • Two (1/2") KO locations provided in the (2) through (6) gang boxes.

SBCMM1G



SBCMM2G



SBCMM3G



SBCMM4G



SBCRND
Round Box

An adjustable depth, new work, old work ceiling box.
Extra deep for mounting all smoke and carbon detectors.



SBCFAN
Fan box

Same features as SBCRND with steel reinforcement.
Side beam mounted, as compared to bottom beam mounted.
Extra deep for paddle fan receivers that mount inside the box.

SBCHZ



Horizontal Box

Match up to existing fittings in old work baseboards.
Works well on exterior siding and shingles.

SBCMMW
Wall Divider



Low Voltage / Line Voltage Barrier.
Wall Dividers fit all (2) - (6) gang MM Boxes (in multiple locations).

Multi Mount (5) Gang and (6) Gang Features

Removable external tabs are provided for easy new work installation and mounting to metal studs. Vertical mount permits large gang installation in tight spaces • One Wall Divider (SBCMMW) is provided for voltage separation.



SBCMMT5G



SBCMMT6G

Call Toll Free: **877-206-5577**

www.smartboxcanada.com

| | | | | | | | | | | | |
|---|--|--|--|---|--|--|--|---|---|--|---|
| SBCMM1G 21 cu in 10 - #14 9 - #12 | SBCMM2G 37 cu in 18 - #14 16 - #12 | SBCMM3G 54 cu in 27 - #14 24 - #12 | SBCMM4G 67 cu in 33 - #14 29 - #12 | SBCMMT5G 91.5 cu in 45 - #14 Removable tabs | SBCMMT6G 110 cu in 55 - #14 Removable tabs | SBCHZ 22.5 cu in 11 - #14 Horizontal Box | SBCMMW Voltage Barrier Fits 2 gang to 6 gang | SBCRND 24 cu in 12 - #14 50 lb. fixture | SBCFAN 24 cu in 50 lb. fan 70 lb. fixture | SBCLV1G Low voltage Horizontal or Vertical mount | SBCLV2G Low voltage 2 gang |
|---|--|--|--|---|--|--|--|---|---|--|---|