


FS and FD Four-Gang Cast Device Boxes: Malleable Iron, Aluminum

Unilets for Use with Threaded Rigid Conduit and IMC.
All Device Boxes have Ridge Top Construction.

ILLUSTRATION	SIZE	STD. PKG.	FERROUS ALLOY
FS Four-Gang Bodies 	3/4"	5	See FDO-4 on page B-16

ILLUSTRATION	Catalogue Number	Description
Four-Gang Covers 	FS-44*	Blank Cover, Steel – Electrogalvanized. Fits FSC-24
	FS-64*	Duplex Receptacle Cover, Steel – Electrogalvanized. Fits FSC-24
	FS-94*	Tumbler Switch Cover, Steel – Electrogalvanized. Fits FSC-24
	FK-94*	Tumbler Switch Cover, Steel – Electrogalvanized. Fits FDO-4 listed on page 16
* Above covers attach to devices		

Vaportight Covers

Furnished with gasket and stainless steel screws



FS-400G
FK-400G

FS-400G*

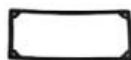
Blank Cover, Ferrous Alloy. Fits FSC-24

FK-400G*

Blank Cover, Ferrous Alloy. Fits FDO-4 on page 16

* Above covers attach to box

Gaskets

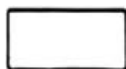


FS4-GK
FK4-GK

FK4-GK

For Covers for FDO-4 Unilets – Sponge Neoprene

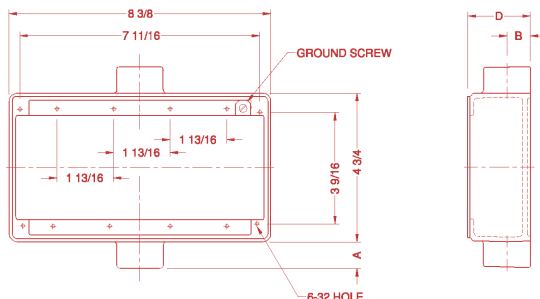
FS4-OGK



FS4-OGK

For FS-400G and FS-1284 Covers with Gasket Mounting Groove

Dimensions FS and FD Unilets



Hub Size	A	B	C	D	
				FS	FD
1/2	3/4	5/8	1-3/8	2	2-3/4
1	7/8	7/8	1-1/4	2	2-3/4

* Available in Aluminum: Add suffix "A" to Catalog No. Cast Covers are copper free (Max copper content less than 4/10 of 1%).

FS and FD Cast Device Boxes: Malleable Iron, Aluminum

Unilets for Use with Threaded Rigid Conduit and IMC.
All Device Boxes have Ridge Top Construction.

Applications

- Accommodate wiring devices such as switches and receptacles.
- Provide excellent service in areas where boxes are subject to rough usage.
- Serve as pull boxes for conductors.
- Permit access to conductors for maintenance.
- Provide openings for making splices.
- Allow connections for branch conduit runs.
- FS and FD blank bodies – for special conduit-entrance arrangements.

Features: All FS and FD Boxes

- Corrosion-resistant – ideal for indoor and outdoor installations.
- Weatherproof, raintight and dust-tight when used with cast gasketed covers.
- FS and FD boxes take standard flush wiring devices.
- FD boxes take devices exceeding 1-5/8" in depth under fastening ears.
- Malleable iron for high tensile strength and ductility – provides greater resistance to impact and shock.
- Both malleable iron and aluminum boxes have ridge top construction for positive cover/gasket/box fit.
- Accurately tapped, tapered threads for tight, rigid joints, ground continuity.
- Complete selection of covers, receptacles, plugs, gasket and accessories.
- Covers have captive stainless steel screws to speed installation, prevent "freezing" of screws.
- Ground screw at top of box for easy access.

Features: Cast Hub Boxes

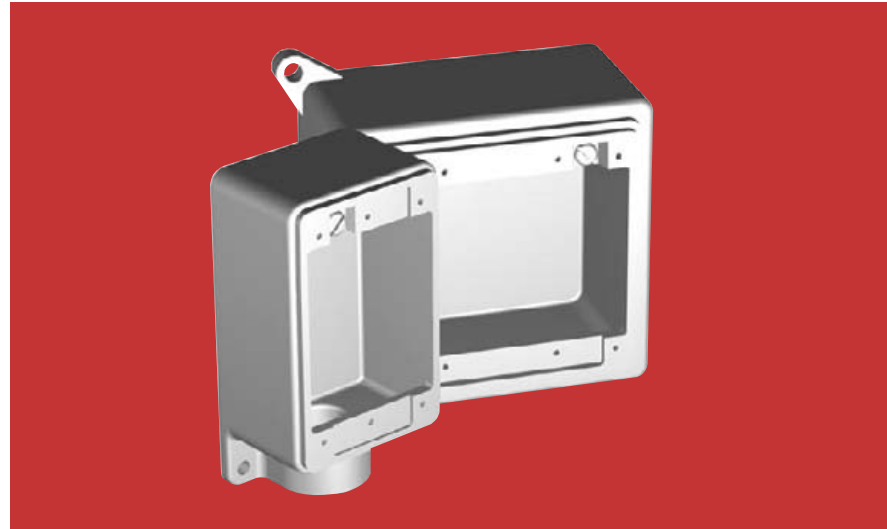
Available in single, two and three gang and tandem.

- Smooth, rounded integral bushing in each hub protects conductor insulation.

Features: FD Blank Bodies for Brazed Hubs or Drill and Tapped Entries

Available in single, two, three and four gang boxes.

- Drill and tapped entries.
- Brazed threaded hubs for threaded conduit from 1/2" thru 1-1/2" and brazed union hubs from 1/2" thru 1-1/4".
- Smooth, rounded integral bushing in



each hub protects conductor insulation.

- Ground screw at top of box for easy access.

Standard Materials

- *Cast Hub Device Boxes and Boxes for Drilling and Tapping:* malleable iron or copper-free (4/10 of 1% max.) aluminum.
- *Brazed Hubs:* malleable iron.
- *Covers:* malleable iron, steel, or copper-free (4/10 of 1% max.) aluminum.

Standard Finishes

- *Malleable Iron Device Boxes:* triple-coat – (1) zinc electroplate, (2) dichromate, and (3) aluminum polymer enamel.
- *Aluminum Device Boxes:* aluminum polymer enamel.
- *Malleable Iron Covers with Gaskets:* triple-coat – (1) zinc electroplate, (2) dichromate, and (3) aluminum polymer enamel.
- *Steel Covers:* zinc electroplate.
- *Aluminum Covers:* aluminum polymer enamel.

Compliances

- CSA approved.

Reference Data

- When ordering drilled and tapped openings or brazed hubs for blank bodies, refer to "Ordering Information" pages.



Gasket is designed so that it "wraps around" ridge top of Appleton aluminum or malleable iron device box. Result is a positive seal against moisture.