

# 0121/0140 Series Multi-Pole Toggle Switches

## Applications

- McGill full-size, single pole toggle switches are available in several electrical ratings to meet a variety of requirements.
- Ruggedly constructed with metallic toggle and threaded bushing to ensure extended service life.
- Marine, food service, generator, industrial control and office automation markets.
- Appropriate for use in low voltage Vdc applications.

## Features

- A variety of circuits are available.
- Available with screw, solder, and 1/4" Quick connect terminals.
- Mounting hardware and terminal screws (where applicable) furnished unassembled.
- Mounting hardware consists of nickel plated hex nut and knurled nut.
- Indicating plate is furnished for maintained ON-OFF circuits.

## Standard Materials

- Base: phenolic +150 °C (+302 °F)
- Bat handle: nickel plated brass
- Bushing: nickel plated brass



0121-0009N



0121-0010N

## Certifications and Compliances

- UL Recognized Component
- UL File Number: E335442
- UL Standard: 1054, Guide WORY2
- CSA File Number: 249055
- CSA Standard: C22.2 No. 55
- RoHS Compliant

| Circuitry              |     |       | Screw Terminal |                | Solder Terminal |                | 1/4" Q.C. Terminal |                | Rating   |
|------------------------|-----|-------|----------------|----------------|-----------------|----------------|--------------------|----------------|--|
| A                      | B   | C     | Poles          | Catalog Number | Poles           | Catalog Number | Poles              | Catalog Number |  |
| <b>15 Amp, 2 Poles</b> |     |       |                |                |                 |                |                    |                |  |
| ON                     | —   | OFF   | DPST           | 0121-0001N     | DPST            | 0121-0017N     | DPST               | 0121-0009N     | 15 Amp, 125 Vac<br>10 Amp, 250 Vac<br>3/4 HP, 250 Vac  |
| ON                     | —   | ON    | DPDT           | 0121-0003N     | DPDT            | 0121-0019N     | DPDT               | 0121-0011N     |  |
| (ON)                   | —   | OFF   | DPST           | 0121-0005N     | DPST            | 0121-0021N     | DPST               | 0121-0013N     |  |
| ON                     | —   | (ON)  | DPDT           | 0121-0006N     | DPDT            | 0121-0022N     | DPDT               | 0121-0014N     |  |
| (OFF)                  | —   | ON    | DPST           | 0121-0043N     | DPST            | 0121-0045N     | DPST               | 0121-0044N     | 15 Amp, 125 Vac<br>10 Amp, 250 Vac<br>3/4 HP, 125-250 Vac  |
| ON                     | OFF | ON    | DPDT           | 0121-0002N     | DPDT            | 0121-0018N     | DPDT               | 0121-0010N     |  |
| (ON)                   | OFF | (ON)  | DPDT           | 0121-0004N     | DPDT            | 0121-0020N     | DPDT               | 0121-0012N     |  |
| ON                     | OFF | (ON)  | DPDT           | 0121-0007N     | DPDT            | 0121-0023N     | DPDT               | 0121-0015N     |  |
| (ON)                   | ON  | ON    | SPTT           | —              | SPTT            | —              | SPTT               | 0127-0001N     |  |
| <b>17 Amp, 3 Pole</b>  |     |       |                |                |                 |                |                    |                |  |
| ON                     | —   | OFF   | 3PST           | 0140-3020N     | 3PST            | 0140-3010N     | 3PST               | 0140-3000N     | 6 Amp, 600 Vac<br>17 Amp, 125 Vac<br>12 Amp, 250 Vac<br>2 HP, 480-600 Vac<br>3 Phase                         |
| (ON)                   | —   | OFF   | 3PST           | 0140-3021N     | 3PST            | 0140-3011N     | 3PST               | 0140-3001N     | 6 Amp, 600 Vac<br>17 Amp, 125 Vac<br>12 Amp, 250 Vac<br>1-1/2 HP, 240 Vac                                    |
| ON                     | —   | (OFF) | 3PST           | 0140-3022N     | 3PST            | 0140-3012N     | 3PST               | 0140-3002N     | 1,2 or 3 Phase<br>2 HP, 480-600 Vac<br>3 Phase   |
| ON                     | —   | ON    | 3PDT           | 0140-3024N     | 3PDT            | 0140-3014N     | 3PDT               | 0140-3004N     | 6 Amp, 600 Vac<br>17 Amp, 125 Vac<br>12 Amp, 250 Vac<br>1 HP, 125 Vac<br>1-1/2 HP, 250 Vac<br>1,2 or 3 Phase |
| ON                     | —   | (ON)  | 3PDT           | 0140-3025N     | 3PDT            | 0140-3015N     | 3PDT               | 0140-3005N     |  |
| ON                     | OFF | ON    | 3PDT           | 0140-3023N     | 3PDT            | 0140-3013N     | 3PDT               | 0140-3003N     | 2 HP, 480-600 Vac<br>3 Phase   |
| ON                     | OFF | (ON)  | 3PDT           | 0140-3026N     | 3PDT            | 0140-3016N     | 3PDT               | 0140-3006N     |  |
| (ON)                   | OFF | (ON)  | 3PDT           | 0140-3027N     | 3PDT            | 0140-3017N     | 3PDT               | 0140-3007N     |  |

Not CSA Listed.

( ) Momentary. Poles: SP = single pole, DP = double pole, ST = single throw, DT = double throw, TT = triple throw.

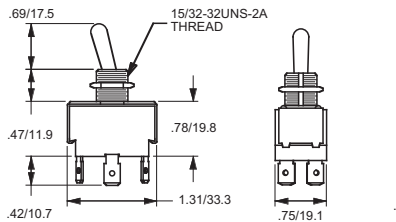
Shaded catalog numbers are normally stocked items. All other items are made to order. Contact your local sales representative for pricing.

# 0121/0140 Series Multi-Pole Toggle Switches

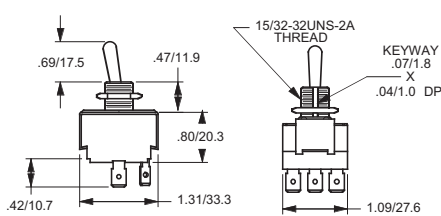
Switches

| Circuitry             |     |       | Screw Terminal |                     | Solder Terminal |                     | 1/4" Q.C. Terminal |                     | Rating  |
|-----------------------|-----|-------|----------------|---------------------|-----------------|---------------------|--------------------|---------------------|---|
| A                     | B   | C     | Poles          | Catalog Number      | Poles           | Catalog Number      | Poles              | Catalog Number      |   |
| <b>15 Amp, 4 Pole</b> |     |       |                |                     |                 |                     |                    |                     |   |
| ON                    | —   | OFF   | 4PST           | <b>0140-4020N</b>   | 4PST            | <b>0140-4010N</b>   | 4PST               | <b>0140-4000N</b>   | 15 Amp, 125 Vac<br>10 Amp, 250 Vac<br>3/4 HP, 250 Vac<br>1,2 or 3 Phase     |
| (ON)                  | —   | OFF   | 4PST           | <b>0140-4021N</b> ① | 4PST            | <b>0140-4011N</b> ① | 4PST               | <b>0140-4001N</b> ① |   |
| ON                    | —   | (OFF) | 4PST           | <b>0140-4022N</b> ① | 4PST            | <b>0140-4012N</b> ① | 4PST               | <b>0140-4002N</b> ① |   |
| ON                    | —   | ON    | 4PDT           | <b>0140-4024N</b>   | 4PDT            | <b>0140-4014N</b>   | 4PDT               | <b>0140-4004N</b>   |   |
| ON                    | —   | (ON)  | 4PDT           | <b>0140-4025N</b>   | 4PDT            | <b>0140-4015N</b>   | 4PDT               | <b>0140-4005N</b>   |   |
| ON                    | OFF | ON    | 4PDT           | <b>0140-4023N</b>   | 4PDT            | <b>0140-4013N</b>   | 4PDT               | <b>0140-4003N</b>   | 15 Amp, 125 Vac<br>10 Amp, 250 Vac<br>3/4 HP, 125-250 Vac<br>1,2 or 3 Phase |
| ON                    | OFF | (ON)  | 4PDT           | <b>0140-4026N</b> ① | 4PDT            | <b>0140-4016N</b> ① | 4PDT               | <b>0140-4006N</b> ① |   |
| (ON)                  | OFF | (ON)  | 4PDT           | <b>0140-4027N</b>   | 4PDT            | <b>0140-4017N</b>   | 4PDT               | <b>0140-4007N</b>   |   |

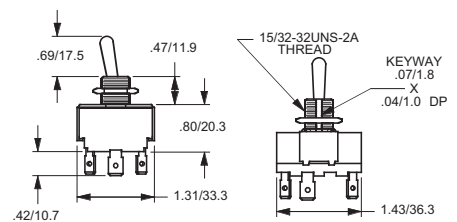
## Dimensions in Inches/Millimeters



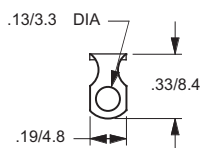
**15 Amp, 2 Pole**



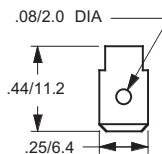
**17 Amp, 3 Pole**



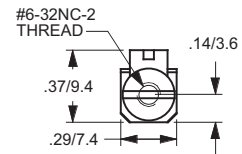
**17 Amp, 4 Pole**



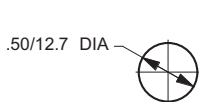
**Solder Lug Terminal**



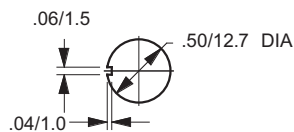
**1/4" Q.C. Terminal**



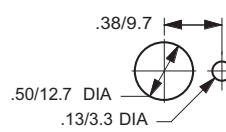
**Screw Terminal**



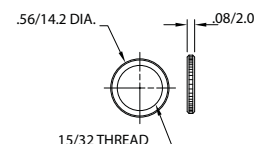
**Mounting Hole**



**Mounting Hole With Keyway**



**Mounting Hole With Locking Ring**



**Knurled Nut**

( ) Momentary. Poles: SP = single pole, DP = double pole, ST = single throw, DT = double throw.

① Not UL or CSA Listed.

**Shaded catalog numbers are normally stocked items. All other items are made to order. Contact your local sales representative for pricing.**