

Liquidtight Fittings

Hot-Dip/Mechanically Galvanized with Insulated Throat

Type 4Q-TG

Straight

Use:

To secure, ground and seal Liquidtight Flexible Metal conduit, Type LFMC, to boxes and enclosures.

Features:

- With Insulated Throat
- Tapered threaded male hub NPT
- Compact, slim diameter with small turning radius
- Furnished with locknut and KO sealing ring.
- Liquidtight/Raintight/Oiltight/Concretetight
- UL Listed NEMA Type 4 when installed into a NPT threaded entry or UL Listed conduit hub (sizes 1½" and larger require thread sealant).
- Suitable for grounding through 1-1/4" Trade Size per NEC Section 250.118(7)
- For Trade Sizes 1-1/2" and larger, an internal or external equipment bonding conductor is required. See 4Q-L Series with external ground lug in Catalog Section GB.
- Suitable for use in the following

Hazardous Locations:


- Class I, Div. 2 per NEC 501.4(B)
 - Class I, Zone 2 per NEC 505.15(C)(2)
 - Class II, Div. 1 per NEC 502.4(A)(1)(e)
 - Class II, Div. 2 per NEC 502.4(B)(2)
 - Class III, Div. 1 per NEC 503.3(A)(2)
 - Class III, Div. 2 per NEC 503.3(B)
- Intrinsically Safe per NEC 504.20

- Bonding Wedge Locknuts are recommended in Hazardous Locations. See 101 Series on Page DB8.
- Suitable for wet locations
- Long ferrule prevents pullout and tight bend conduit "pop-out"
- Inspection windows in ferrule to ensure full engagement
- Provided with insulated throat
- See Page GC4 for our patented Ferrule Wrench which makes ferrule installation easy.

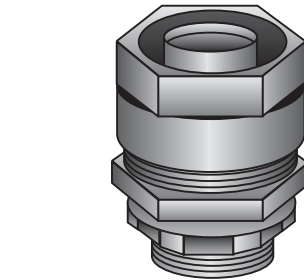
Material/Finish:

Malleable Iron/Galvanized
Steel Ferrule/Zinc Electroplated

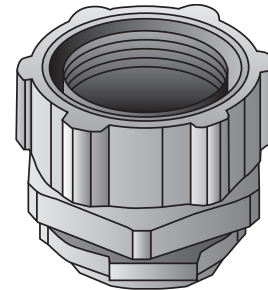
Third Party Certification:

 UL Listed: 11853

 CSA Certified: 9795



Type 4Q-38TG — Type 4Q-200TG



Type 4Q-250TG — Type 4Q-600TG

Trade Size (inches)	Insulated Throat Catalog Number	Dimensions in Inches		
		A	B	C
¾ (½ KO)	4Q-38TG	1	½	1⅞
½	4Q-50TG	1	½	1¼
¾	4Q-75TG	1⅞	½	1½
1	4Q-100TG	1¼	⅝	1¾
1¼	4Q-125TG	1⅞	⅝	2½
1½	4Q-150TG	1⅞	⅝	2¼
2	4Q-200TG	1½	⅝	3¼
2½	4Q-250TG	2	1	4⅞
3	4Q-300TG	2	1⅞	4⅞
3½	4Q-350TG	2¼	1¼	4⅞
4	4Q-400TG	2¼	1¼	6⅞
5	4Q-500TG*	2⅞	1⅞	7⅞
6	4Q-600TG*	2½	1⅞	8⅞

*UL Listing not applicable

*CSA Certification not applicable

