

# Grip-Tite® Strain Relief Connectors

## Type SR

### Straight

#### Use:

To secure and seal cords or cables entering enclosures or raceways.

#### Features:

- Grip-tite style - 2-piece internal design features a nylon gripper for exceptional pullout protection and a neoprene grommet for a moisture-proof seal (up to 1" dia. cord range).
- Dual-grommet style - for over 1" dia. cord range. Removable insert allows for wider range of cable diameters within single fitting
- Simple installation, cord can be installed without disassembly of the fitting
- Liquidtight/Oiltight/Raintight
- UL Listed NEMA 4, 6 & 12 when installed into a NPT threaded entry or UL Listed conduit hub (sizes 1½" and larger require thread sealant).
- Rated at 90°C
- Suitable for NEMA 4 enclosures and other wet locations
- Male tapered thread NPT
- Slim diameter profile allows close spacing between connectors
- Furnished complete with sealing ring and locknut
- Colored gripper allows for easy identification

#### Material:

Malleable Iron Body & Gland Nut, Nylon Gripper, Neoprene Grommet, PVC or Buna-N Sealing Ring, Steel Locknut

#### Finish:

Zinc Plated on Body, Gland Nut and Locknut

#### Optional Finish:

Mechanical Galvanized  
Contact your local representative

#### Third Party Certification:



UL Listed: E-11857



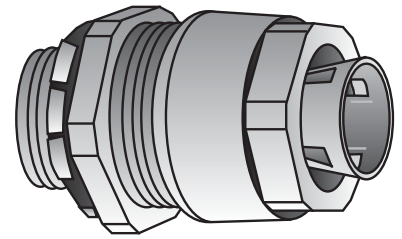
CSA Certified: 009795

#### Applicable Third Party Standards:

UL Standard: 514B  
CSA Standard: C22.2 No. 18  
Fed. Spec: W-F-406E

#### Notes:

Suitable for use in Hazardous Locations under NEC Sec. 501-4(b), 502-4(a) (2), and 503-3(a). For Class I, Div. 2, Class II, Div. 1, 2, and Class III, Div. 1, 2.



Type SR-50-250

Catalog Number	Dimensions in Inches			Style	Color	Dimensions in Inches		
	Cord Range Min.	Cord Range Max.	Hub Size			Throat I.D.	Body Length	Max Dia.
SR-50-250	.156	.250	½	Grip-Tite	Red	.53	1¼	1⅝
SR-50-375	.250	.375	½		White	.53	1¼	1⅝
SR-50-500	.375	.500	½		Blue	.53	1¼	1⅝
•SR-50-625	.500	.625	½		Brown	•.61	1¼	1⅝
SR-75-250	.156	.250	¾	Grip-Tite	Red	.53	1¼	1⅝
SR-75-375	.250	.375	¾		White	.53	1¼	1⅝
SR-75-500	.375	.500	¾		Blue	.53	1¼	1⅝
SR-75-625	.500	.625	¾		Brown	.75	1¼	1⅝
SR-75-750	.625	.750	¾		Yellow	.78	1¼	1½
•SR-75-875	.750	.875	¾	Purple	•.81	1¼	1¼	
SR-100-750	.625	.750	1	Grip-Tite	Yellow	.78	1¼	1¼
SR-100-875	.750	.875	1		Purple	.96	1¼	1¼
SR-100-1000	.875	1.000	1		Grey	1.05	1¼	1⅝
SR-125-1000	.875	1.000	1¼		Grey	1.20	1⅝	2⅝
•SR-100-1125	1.000	1.125	1	Single Grommet		•1.05	1⅝	1½
•SR-125-1375	1.000	1.375	1¼			•1.35	1⅝	2½
SR-150-1375	1.000	1.375	1½	Dual Grommet		1.38	1⅝	2½
•SR-150-1750	1.375	1.750	1½			•1.53	1⅝	3
SR-200-1750	1.375	1.750	2			1.59	2⅝	3
SR-250-2000	1.625	2.000	2½			2.50	2½	4
SR-250-2250	1.875	2.250	2½			2.50	2½	4
SR-300-2250	1.875	2.250	3			2.50	2½	4½
SR-300-2500	2.125	2.500	3		2.50	2½	4½	

•Remove enough jacket to get conductors through throat I.D.

# Grip-Tite® Strain Relief Connectors

## Type SR

90°

### Use:

To secure and seal cords or cables entering enclosures or raceways.

### Features:

- Grip-tite style - 2-piece internal design features a nylon gripper for exceptional pullout protection and a neoprene grommet for a moisture-proof seal (up to 1" dia. cord range).
- Dual-grommet style - for over 1" dia. cord range. Removable insert allows for wider range of cable diameters within single fitting
- Simple installation, cord can be installed without disassembly of the fitting
- Liquidtight/Oiltight/Raintight
- UL Listed NEMA 4, 6 & 12 when installed into a NPT threaded entry or UL Listed conduit hub.
- Rated at 90°C
- Suitable for NEMA 4 enclosures and other wet locations
- Male tapered thread NPT
- Slim diameter profile allows close spacing between connectors
- Furnished complete with sealing ring and locknut
- Colored gripper allows for easy identification

### Material:

Malleable Iron Body & Gland Nut, Nylon Gripper, Neoprene Grommet, PVC or Buna-N Sealing Ring, Steel Locknut

### Finish:

Zinc Plated on Body, Gland Nut and Locknut

### Optional Finish:

Mechanical Galvanized  
Contact your local representative.

### Third Party Certification:

 UL Listed: E-11857

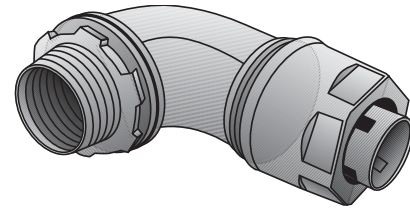
 CSA Certified: 009795

### Applicable Third Party Standards:

UL Standard: 514B  
CSA Standard: C22.2 No. 18  
Fed. Spec: W-F-406E

### Notes:

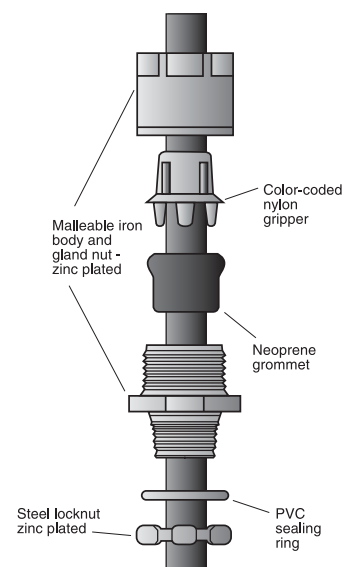
Suitable for use in Hazardous Locations under NEC Sec. 501-4(b), 502-4(a) (2), and 503-3(a). For Class I, Div. 2, Class II, Div. 1, 2, and Class III, Div. 1, 2.



Type SR-950-250

Catalog Number	Dimensions in Inches			Style	New Color	Dimensions in Inches			
	Cord Range		Hub Size			Throat I.D.	Body Length	Max Dia.	Turning Radius
SR-950-250	.156	.250	½	Grip-Tite	Red	.59	1⅞	1⅞	1⅞
SR-950-375	.250	.375	½		White	.59	1⅞	1⅞	1⅞
SR-950-500	.375	.500	½		Blue	.59	1⅞	1⅞	1⅞
•SR-950-625	.500	.625	½		Brown	•.59	1⅞	1⅞	1⅞
SR-975-250	.156	.250	¾	Grip-Tite	Red	.81	1⅞	1⅞	1⅞
SR-975-375	.250	.375	¾		White	.81	1⅞	1⅞	1⅞
SR-975-500	.375	.500	¾		Blue	.81	1⅞	1⅞	1⅞
SR-975-625	.500	.625	¾		Brown	.81	1⅞	1⅞	1⅞
SR-975-750	.625	.750	¾		Yellow	.81	1⅞	1½	2
•SR-975-875	.750	.875	¾	Purple	•.82	1⅞	1⅞	1⅞	
SR-9100-875	.750	.875	1	Grip-Tite	Purple	1.02	1⅞	1⅞	2
SR-9100-1000	.875	1.000	1		Grey	1.04	2½	1⅞	2
SR-9125-1000	.875	1.000	1¼	Grip-Tite	Grey	1.34	2⅞	1⅞	2⅞
•SR-9125-1375	1.000	1.375	1¼		Dual Grommet	•1.34	2⅞	1⅞	2⅞

•Remove enough jacket to get conductors through Throat I.D.



Strain Relief Installation

# Grip-Tite® Strain Relief Connectors

Selection Chart\*

### GRIP-TITE STRAIN RELIEF CONNECTOR SELECTION CHART

TYPE OF CORD	SV SVO SVT	SJT						SJ, SJTO, SJO						STO					S, SO													
		18		16		18		16		14		12		10		18		16		14		12		10		8		6		4		
		2	3	2	3	2	3	2	3	2	3	2	3	2	3	2	3	2	3	2	3	2	3	2	3	2	3	2	3	2	3	
-250 (RED)																																
-375 (WHITE)																																
-500 (BLUE)																																
-625 (BROWN)																																
-750 (YELLOW)																																
-875 (PURPLE)																																
-1000 (GREY)																																

Catalog Number Suffix (Nylon Gripper Color)

\*This chart is intended for use as a guide only. Whenever possible, exact cord dimensions should be used. O-Z/Gedney Company assumes no liability for errors, omissions or dimensional changes which may result from changes in design, material or the manufacturing process and which may affect cord and fitting compatibility.