

# Pipe Straps

For Rigid Conduit & IMC

## Type 14-S

Use: To support Rigid Conduit and IMC.

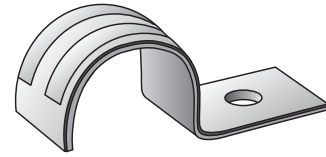
Features: Snap type - double ribbed

Material/Finish: Steel/Zinc Plated

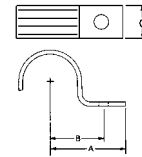
Applicable Third Party Standards:  
Fed. Spec: FF-S-760

Note:  
2½" through 4" sizes also suitable for EMT.

Trade Size (inches)	Steel Straps Catalog Number	Dimensions in Inches			Minimum Recommended Bolt Dia.
		A	B	C	
½	14-50S	2½	1¼	¾	¼
¾	14-75S	2¾	1½	¾	¼
1	14-100S	2¾	1½	¾	¼
1¼	14-125S	3½	1⅝	1	⅝
1½	14-150S	3⅝	1⅞	1⅞	⅝
2	14-200S	4¾	2½	1¼	⅝
2½	14-250S	6¾	2⅞	1¼	⅝
3	14-300S	6¾	3	1¼	⅝
3½	14-350S	7⅝	3⅞	1½	⅝
4	14-400S	8⅝	3⅞	1½	⅝



Type 14-S



## Type THR

Use: To support Rigid Conduit and IMC.

Features: Snap type - double ribbed

Material/Finish: Steel/Zinc Plated

Third Party Certification:  
CSA Certified: 104691  
½" through 2" sizes only

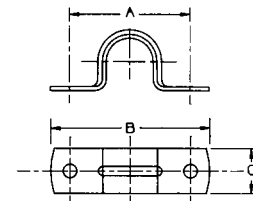
Applicable Third Party Standards:  
CSA C22.2 No.18  
Fed. Spec: FF-S-760

Note:  
2½" through 4" sizes also suitable for EMT.

Trade Size (inches)	Steel Straps Catalog Number	Dimensions in Inches			Minimum Recommended Bolt Dia.
		A	B	C	
½	THR-50S	1¼	2¼	⅝	⅜
¾	THR-75S	1 <sup>27</sup> / <sub>32</sub>	2 <sup>5</sup> / <sub>16</sub>	¾	⅜
1	THR-100S	2 <sup>5</sup> / <sub>16</sub>	2 <sup>15</sup> / <sub>16</sub>	2 <sup>3</sup> / <sub>32</sub>	¼
1¼	THR-125S	2 <sup>15</sup> / <sub>16</sub>	3⅞	2 <sup>3</sup> / <sub>32</sub>	¼
1½	THR-150S	3 <sup>5</sup> / <sub>32</sub>	3 <sup>15</sup> / <sub>16</sub>	2 <sup>3</sup> / <sub>32</sub>	¼
2	THR-200S	4¼	5	2 <sup>3</sup> / <sub>32</sub>	¼
2½	THR-250S	4 <sup>11</sup> / <sub>16</sub>	5 <sup>23</sup> / <sub>32</sub>	1	⅝
3	THR-300S	5 <sup>11</sup> / <sub>16</sub>	6¾	1	⅝
3½	THR-350S	6 <sup>5</sup> / <sub>16</sub>	7 <sup>5</sup> / <sub>16</sub>	1	⅝
4	THR-400S	6 <sup>27</sup> / <sub>32</sub>	7 <sup>13</sup> / <sub>16</sub>	1	⅝



Type THR



## Type 14-G

Use:  
To support Rigid Conduit and IMC.

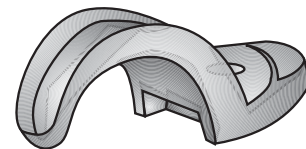
Material/Finish:  
Malleable Iron/Hot Dipped Galvanized

Third Party Certification:  
CSA Certified: 009795.

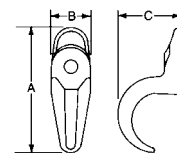
Applicable Third Party Standards:  
CSA: C22.2 No.18  
Fed. Spec: FF-S-760

Note:  
2½" through 4" sizes also suitable for EMT.

Malleable Straps Catalog Number	Conduit Size Inches	Dimensions in Inches			Minimum Recommended Bolt Dia.
		A	B	C	
14-18G	⅛	1 <sup>15</sup> / <sub>16</sub>	½	½	#10
14-25G	¼	1 <sup>19</sup> / <sub>32</sub>	1 <sup>9</sup> / <sub>32</sub>	⅝	¼
14-38G	⅜	1¼	⅝	¾	¼
14-50G	½	2¼	2 <sup>1</sup> / <sub>32</sub>	1 <sup>1</sup> / <sub>16</sub>	¼
14-75G	¾	2 <sup>9</sup> / <sub>16</sub>	¾	1 <sup>1</sup> / <sub>32</sub>	¼
14-100G	1	3 <sup>1</sup> / <sub>16</sub>	1 <sup>1</sup> / <sub>16</sub>	1½	¼
14-125G	1¼	3 <sup>1</sup> / <sub>16</sub>	7 <sup>1</sup> / <sub>8</sub>	1⅞	⅝
14-150G	1½	6¼	1	2⅞	⅝
14-200G	2	5 <sup>1</sup> / <sub>16</sub>	1⅞	2 <sup>1</sup> / <sub>16</sub>	½
14-250G	2½	5 <sup>5</sup> / <sub>16</sub>	1⅞	3 <sup>1</sup> / <sub>16</sub>	½
14-300G	3	7 <sup>1</sup> / <sub>16</sub>	1⅞	3 <sup>1</sup> / <sub>16</sub>	½
14-350G	3½	8 <sup>1</sup> / <sub>16</sub>	1 <sup>13</sup> / <sub>16</sub>	4⅞	⅝
14-400G	4	8 <sup>1</sup> / <sub>16</sub>	2	5	⅝
14-500G	5	10 <sup>19</sup> / <sub>16</sub>	2¾	6½	⅝
14-600G	6	12½	3⅞	7½	1



Type 14-G



# Clamp Backs & Conduit Spacers

For Rigid Conduit, IMC & EMT

## Clamp Backs

### Use:

Provides spacing from mounting surface when used with malleable iron pipe straps.

### Material:

Malleable Iron

### Finish:

Hot Dip Galvanized

### Third Party Certification:

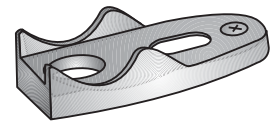


CSA Certified: 009795

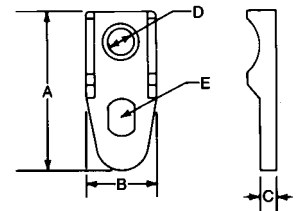
### Applicable Third Party Standards:

CSA Standard: C22.2 No. 18

Trade Size (inches)	Catalog Number	Dimensions in Inches				
		A	B	C	D	E
1/2	141G	1 1/16	1 1/16	1/4	3/8	3/8 x 1/2
3/4	142G	2 1/2	1 1/8	1/4	3/8	9/16 x 7/16
1	143G	3 3/16	1 3/16	3/16	3/8	9/16 x 7/16
1 1/4	144G	3 11/16	1 1/16	5/16	1/2	9/16 x 17/32
1 1/2	145G	3 9/16	1 1/2	3/16	9/16	19/32 x 23/32
2	146G	5 5/8	2	3/8	9/16	5/8 x 13/16
2 1/2	147G	5 3/4	2 1/2	3/8	1/32	5/8 x 1 1/8
3	148G	7 1/8	2 13/16	3/8	15/32	5/8 x 1 1/8
3 1/2	149G	8	3 3/32	7/16	15/32	1 1/16 x 1 11/32
4	150G	8 3/4	3 1/16	3/8	15/32	23/32 x 1 17/32
5	151G	10 1/16	3 11/16	1/2	17/32	27/32 x 1 5/16
6	152G	12	3 3/16	9/16	9/16	1 1/4 x 2



Clamp Back



## Conduit Spacers

### Use:

For use with malleable iron pipe straps and clamp back, to provide additional spacing between conduit and mounting surface.

### Features:

- Spacers fit snugly under clamp back and makes possible additional spacing away from the mounting surface. Spacers can stack up into each other so that conduit can be installed at any desired distance from walls or ceilings.

### Materials:

Malleable Iron

### Finish:

Hot Dip or Mechanical Galvanized

### Third Party Certification:

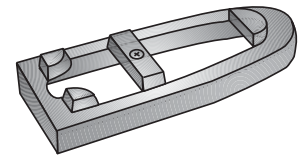


CSA Certified: 009795

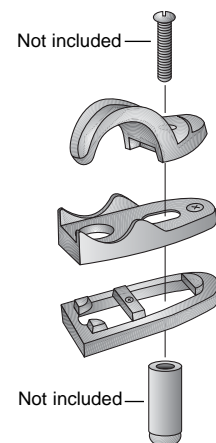
### Applicable Third Party Standards:

CSA Standard: C22.2 No. 18

Trade Size (inches)	Catalog Number	Dimensions in Inches		
		Length	Width	Thickness
1/2	141-NG	2 1/2	1 1/16	1/4
3/4	142-NG	2 1/2	1 1/8	1/4
1	143-NG	3 3/16	1 3/16	1/4
1 1/4	144-NG	3 3/4	1 1/4	1/4
1 1/2	145-NG	3 9/16	1 9/16	1/4
2	146-NG	5 5/16	2 3/16	1/4
2 1/2	147-NG	5 13/16	2 9/16	3/8
3	148-NG	7 3/16	2 13/16	3/8
3 1/2	149-NG	8	3 1/4	3/8
4	150-NG	8 3/4	3 7/16	3/8



Nest Back Fitting



Typical Installation

# Beam Clamps

## Type IS

### Use:

Provides support for conduit hanging systems.

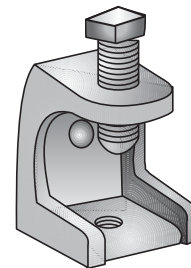
### Material:

Malleable Iron clamp  
Steel Screw, case hardened

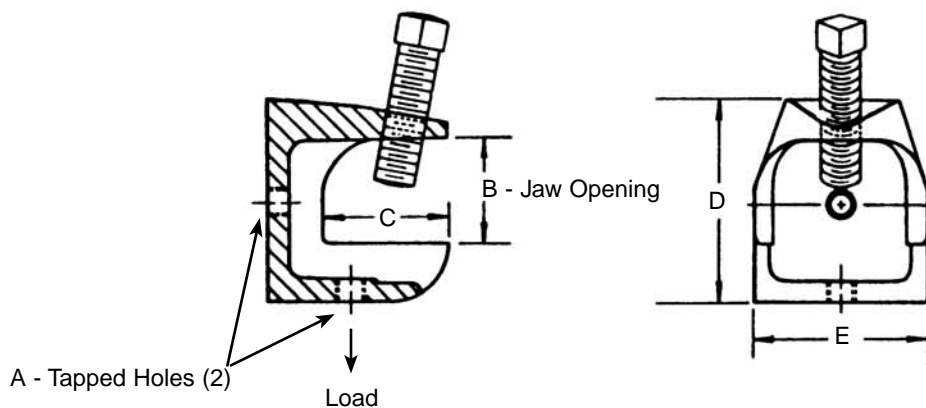
### Finish:

Clamp - Hot Dip Galvanized  
Screw - Zinc Electroplated

Catalog Number	A Tapped Holes	B Jaw Opening	Dimensions in Inches			Max. Load (lbs.)
			C	D	E	
IS-500	¼ - 20	1 <sup>5</sup> / <sub>16</sub>	7 <sup>7</sup> / <sub>8</sub>	1 <sup>5</sup> / <sub>8</sub>	1	335
IS-509	10 - 24	1 <sup>5</sup> / <sub>16</sub>	7 <sup>7</sup> / <sub>8</sub>	1 <sup>5</sup> / <sub>8</sub>	1	335
IS-501	5 <sup>5</sup> / <sub>16</sub> - 18	1 <sup>5</sup> / <sub>16</sub>	1 <sup>1</sup> / <sub>8</sub>	1 <sup>13</sup> / <sub>16</sub>	1 <sup>1</sup> / <sub>2</sub>	525
IS-502	3 <sup>3</sup> / <sub>8</sub> - 16	1	1 <sup>3</sup> / <sub>8</sub>	2 <sup>1</sup> / <sub>16</sub>	2	750
IS-503	½ - 13	1 <sup>1</sup> / <sub>8</sub>	1 <sup>11</sup> / <sub>16</sub>	2 <sup>1</sup> / <sub>4</sub>	2 <sup>5</sup> / <sub>8</sub>	900



Type IS



# Conduit Clamps

## Type UBC

Right Angle

## Type UPC

Parallel

## Type UEC

Edge type

### Use:

Designed to secure Rigid Conduit, IMC or EMT across, parallel or perpendicular to beam, channel and angle supports.

### Features:

- Easily installed
- Capable of withstanding heavy loads

### Material:

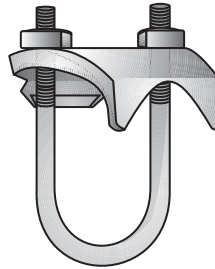
All components are Malleable Iron except nuts and bolts which are steel.

### Finish:

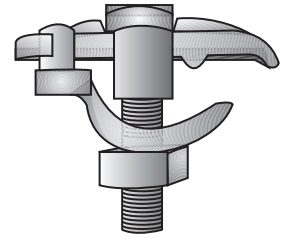
Clamp - Hot Dipped Galvanized  
Hardware - Mechanically Galvanized

### Note:

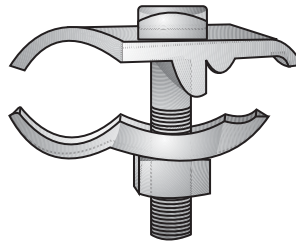
Edge type UEC used for rigid conduit only.



Type UBC-G  
Right Angle Type



Type UEC - G  
Edge Type



Type UPC-G  
Parallel Type

Trade Size (Inches)	Right Angle Type Catalog Number	Parallel Type Catalog Number	Edge Type Catalog Number
½	UBC-50G	UPC-50G	UEC-50G
¾	UBC-75G	UPC-75G	UEC-75G
1	UBC-100G	UPC-100G	UEC-100G
1¼	UBC-125G	UPC-125G	UEC-125G
1½	UBC-150G	UPC-150G	UEC-150G
2	UBC-200G	UPC-200G	UEC-200G
2½	UBC-250G	UPC-250G	UEC-250G
3	UBC-300G	UPC-300G	UEC-300G
3½	UBC-350G	UPC-350G	
4	UBC-400G	UPC-400G	
5	UBC-500G		
6	UBC-600G		

# Conduit U-Bolts & Hangers

For Rigid Conduit, IMC & EMT

## Type U

### Conduit U-Bolts

#### Features:

- 2 hex nuts

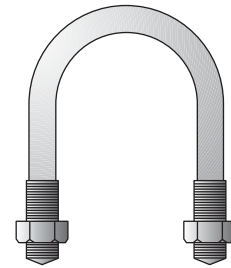
#### Material:

Steel

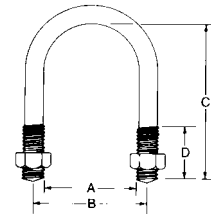
#### Finish:

Mechanically Galvanized

Trade Size (inches)	Catalog Number	Dimensions in Inches				Thread Size
		A	B	C	D	
1/2	U-50SG	1 <sup>5</sup> / <sub>16</sub>	1 <sup>1</sup> / <sub>16</sub>	2 <sup>1</sup> / <sub>2</sub>	1 <sup>1</sup> / <sub>2</sub>	1/4 - 20
3/4	U-75SG	1 <sup>1</sup> / <sub>8</sub>	1 <sup>1</sup> / <sub>16</sub>	2 <sup>1</sup> / <sub>2</sub>	1 <sup>1</sup> / <sub>2</sub>	1/4 - 20
1	U-100SG	1 <sup>7</sup> / <sub>16</sub>	1 <sup>1</sup> / <sub>4</sub>	2 <sup>13</sup> / <sub>16</sub>	1 <sup>1</sup> / <sub>2</sub>	5/16 - 18
1 1/4	U-125SG	1 <sup>3</sup> / <sub>4</sub>	2 <sup>1</sup> / <sub>16</sub>	3 <sup>3</sup> / <sub>4</sub>	1 <sup>1</sup> / <sub>2</sub>	5/16 - 18
1 1/2	U-150SG	2	2 <sup>7</sup> / <sub>16</sub>	3 <sup>1</sup> / <sub>2</sub>	1 <sup>1</sup> / <sub>2</sub>	5/16 - 18
2	U-200SG	2 <sup>1</sup> / <sub>2</sub>	2 <sup>7</sup> / <sub>8</sub>	4	1 <sup>3</sup> / <sub>4</sub>	3/8 - 16
2 1/2	U-250SG	3	3 <sup>3</sup> / <sub>8</sub>	4 <sup>1</sup> / <sub>2</sub>	1 <sup>3</sup> / <sub>4</sub>	3/8 - 16
3	U-300SG	3 <sup>3</sup> / <sub>8</sub>	4	5 <sup>1</sup> / <sub>4</sub>	1 <sup>3</sup> / <sub>4</sub>	3/8 - 16
3 1/2	U-350SG	4 <sup>1</sup> / <sub>8</sub>	4 <sup>1</sup> / <sub>2</sub>	5 <sup>11</sup> / <sub>16</sub>	1 <sup>3</sup> / <sub>4</sub>	3/8 - 16
4	U-400SG	4 <sup>5</sup> / <sub>8</sub>	5	6 <sup>1</sup> / <sub>4</sub>	1 <sup>3</sup> / <sub>4</sub>	3/8 - 16
5	U-500SG	5 <sup>5</sup> / <sub>8</sub>	6	7 <sup>7</sup> / <sub>8</sub>	1 <sup>3</sup> / <sub>4</sub>	3/8 - 16
6	U-600SG	6 <sup>11</sup> / <sub>16</sub>	7 <sup>1</sup> / <sub>16</sub>	8 <sup>3</sup> / <sub>8</sub>	1 <sup>3</sup> / <sub>4</sub>	3/8 - 16



Type U

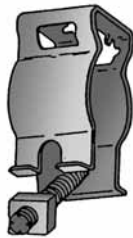


## Type H-SBS

### Conduit Hangers with Swing Bolt and Nut

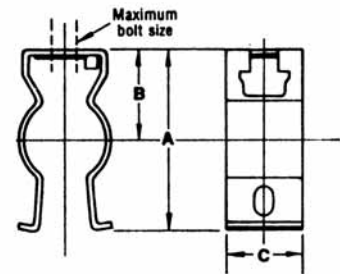
#### Material/Finish:

Steel/Zinc Plated



Type H-SBS

Trade Size (inches)	With Bolt/Nut Catalog Number	Dimensions in Inches			Max. Bolt Size
		A	B	C	
1/2	H-0SBS	1 <sup>23</sup> / <sub>32</sub>	7/8	3/4	1/4
3/4	H-1SBS	1 <sup>27</sup> / <sub>32</sub>	2 <sup>9</sup> / <sub>32</sub>	7/8	1/4
1	H-2SBS	2 <sup>11</sup> / <sub>32</sub>	1 <sup>5</sup> / <sub>32</sub>	7/8	1/4
1 1/4	H-3SBS	2 <sup>27</sup> / <sub>32</sub>	1 <sup>3</sup> / <sub>8</sub>	7/8	1/4
1 1/2	H-4SBS	3 <sup>1</sup> / <sub>16</sub>	1 <sup>5</sup> / <sub>8</sub>	1	5/16
2	H-5SBS	3 <sup>19</sup> / <sub>32</sub>	1 <sup>7</sup> / <sub>8</sub>	1 <sup>1</sup> / <sub>4</sub>	5/16



## Type H-WBS

### Conduit Hangers with Carriage Bolt and Nut

#### Material/Finish:

Steel/Zinc Plated



Type H-WBS

Trade Size (inches)	With Bolt/Nut Catalog Number	Dimensions in Inches			Max. Bolt Size
		A	B	C	
1/2	H-0WBS	1 <sup>1</sup> / <sub>8</sub>	7/8	3/4	1/4
3/4	H-1WBS	2	2 <sup>9</sup> / <sub>32</sub>	7/8	1/4
1	H-2WBS	2 <sup>13</sup> / <sub>32</sub>	1 <sup>5</sup> / <sub>32</sub>	7/8	1/4
1 1/4	H-3WBS	2 <sup>19</sup> / <sub>16</sub>	1 <sup>3</sup> / <sub>8</sub>	7/8	1/4
1 1/2	H-4WBS	3 <sup>3</sup> / <sub>32</sub>	1 <sup>5</sup> / <sub>8</sub>	1	5/16
2	H-5WBS	3 <sup>3</sup> / <sub>4</sub>	1 <sup>7</sup> / <sub>8</sub>	1 <sup>1</sup> / <sub>4</sub>	5/16
2 1/2	H-6WBS	4 <sup>7</sup> / <sub>32</sub>	2 <sup>1</sup> / <sub>8</sub>	1 <sup>1</sup> / <sub>4</sub>	5/16
3	H-7WBS	4 <sup>7</sup> / <sub>8</sub>	2 <sup>3</sup> / <sub>8</sub>	1 <sup>1</sup> / <sub>4</sub>	5/16
3 1/2	H-8WBS	5 <sup>3</sup> / <sub>8</sub>	2 <sup>11</sup> / <sub>16</sub>	1 <sup>1</sup> / <sub>4</sub>	5/16
4	H-9WBS	6 <sup>7</sup> / <sub>16</sub>	3	1 <sup>3</sup> / <sub>4</sub>	1/2

# Conduit Clamps

For Rigid Conduit, IMC & EMT

## Type J

### Use:

For securing Rigid Conduit, IMC, EMT and Flexible Metal Conduit.

### Material:

Malleable Iron  
Steel Bolt

### Finish:

Mechanically Galvanized

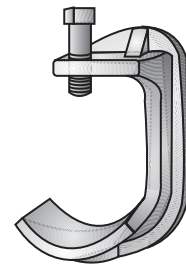
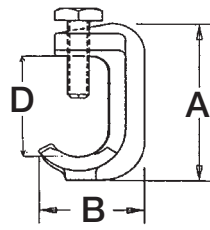
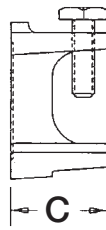
### Third Party Certification:



CSA Certified: 009795

### Applicable Third Party Standards:

CSA Standard: C22.2 No. 18



Type J

Trade Size (inches)	Catalog Number	Dimensions in Inches				Bolt Size
		A	B	C	D	
1/2	J-50G	2 <sup>9</sup> / <sub>16</sub>	1 <sup>1</sup> / <sub>16</sub>	1 <sup>3</sup> / <sub>8</sub>	1 <sup>5</sup> / <sub>8</sub>	5/16-18 x 1 1/2
3/4	J-75G	2 <sup>7</sup> / <sub>16</sub>	1 <sup>1</sup> / <sub>16</sub>	1 <sup>13</sup> / <sub>16</sub>	1 <sup>15</sup> / <sub>16</sub>	5/16-18 x 1 1/2
1	J-100G	3 <sup>1</sup> / <sub>2</sub>	2 <sup>5</sup> / <sub>16</sub>	1 <sup>3</sup> / <sub>4</sub>	2 <sup>1</sup> / <sub>4</sub>	5/16-18 x 1 1/2
1 1/4	J-125G	3 <sup>3</sup> / <sub>4</sub>	2 <sup>1</sup> / <sub>2</sub>	1 <sup>3</sup> / <sub>4</sub>	2 <sup>7</sup> / <sub>16</sub>	3/8-16 x 1 1/2
1 1/2	J-150G	4 <sup>1</sup> / <sub>16</sub>	2 <sup>5</sup> / <sub>16</sub>	2	2 <sup>13</sup> / <sub>16</sub>	3/8-16 x 1 1/2
2	J-200G	5	3 <sup>5</sup> / <sub>16</sub>	2 <sup>1</sup> / <sub>16</sub>	3 <sup>7</sup> / <sub>16</sub>	1/2-13 x 1 3/4
2 1/2-3	J-2530G	6 <sup>5</sup> / <sub>16</sub>	4 <sup>7</sup> / <sub>16</sub>	2 <sup>5</sup> / <sub>8</sub>	4 <sup>9</sup> / <sub>16</sub>	5/8-11 x 2 1/2
3 1/2-4	J-3540G	7 <sup>5</sup> / <sub>16</sub>	5 <sup>1</sup> / <sub>16</sub>	3 <sup>1</sup> / <sub>4</sub>	5 <sup>3</sup> / <sub>4</sub>	5/8-11 x 2 1/2

## Type CBC

### Conduit C Clamp

### Use:

For securing Rigid Conduit, IMC and EMT.  
Swivel grip rotates a full 360°.

### Material/Finish:

Malleable Iron/Zinc Plated  
Steel square head screw

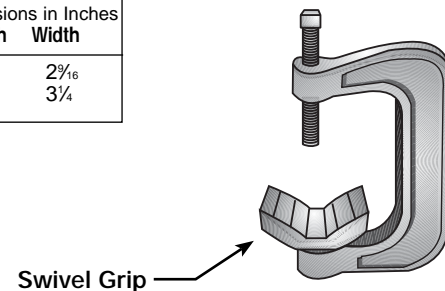
### Optional Finish:

Mechanically Galvanized  
Contact your local representative for pricing,  
availability and minimum order quantities.

### Note:

1 CBC-1– maximum beam thickness of 1/4" when  
using 1 1/4" conduit.  
2 CBC-2– maximum beam thickness of 1/8" when  
using 2" conduit.

Trade Size (inches)	Catalog Number	Dimensions in Inches	
		Length	Width
1/2 - 3/4 - 1 - 1 1/4	CBC-1	3 <sup>3</sup> / <sub>8</sub>	2 <sup>1</sup> / <sub>16</sub>
1 1/4 - 1 1/2 - 2	CBC-2	4 <sup>7</sup> / <sub>8</sub>	3 <sup>1</sup> / <sub>4</sub>



Type CBC

# Tray-Bond™ Cable Tray Clamps

For Rigid Conduit, IMC & EMT

## Type CTC

### Use:

For connecting and grounding rigid conduit, IMC, or EMT to cable trays.

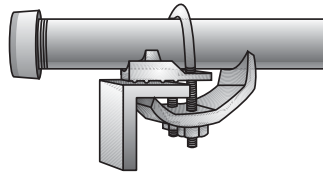
Secures and bonds metal conduit (rigid steel or aluminum, IMC and EMT) to the side rails of steel or aluminum cable trays without drilling or welding the tray. On the 1/2" through 4" sizes, conduits can attach to the tray from any angle up to 120°, allowing large power or control cables to be routed easily.

### Features:

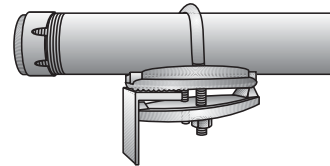
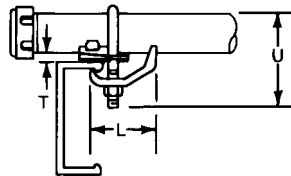
- Fast Installation
- Low Product Cost
- Excellent Grounding Continuity
- Variable Conduit Entry 1/2" - 4" sizes
- High Mechanical Strength
- Compact Design
- Meets NEC 318-7 (b)(4) Bonding Requirements

### Suggested Specifications:

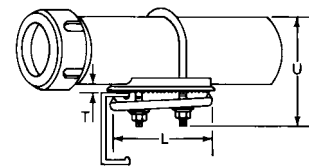
"Raceways connected to cable trays shall be properly bonded using UL Listed and CSA Certified bolted mechanical connectors made from malleable iron, hot dip galvanized components and steel, mechanically galvanized bolts. The cable tray conduit clamps shall be O-Z/Gedney, Type CTC".



Type CTC-0507 & Type CTC-1012  
1/2" — 1 1/4" Sizes  
Right Angle to Tray

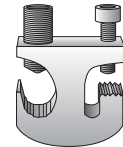


Type CTC-150 & Type CTC-400  
1 1/2" — 4" Sizes  
Variable Angle to Tray



Rigid or IMC, EMT Trade Size (inches)	Catalog Number	U-Bolt & Nut Size	Dimensions in Inches				Recommended Ins. Torque In. - Lbs.
			W	L	T	U	
1/2 - 3/4	CTC-0507	1/4 - 20	2 1/4	2 1/4	1/4	2 1/2	60
1 - 1 1/4	CTC-1012	5/16 - 18	2 5/8	2 1/4	1/4	3 1/4	115
1 1/2	CTC-150	3/16 - 18	3 3/8	3 1/2	3/8	3 1/2	115
2	CTC-200	3/8 - 16	4 1/2	4	3/8	4	190
2 1/2	CTC-250	3/8 - 16	5	4 1/2	3/8	4 1/2	190
3	CTC-300	3/8 - 16	5 5/8	5 1/8	3/8	5 1/4	190
3 1/2	CTC-350	3/8 - 16	6 1/8	5 1/2	3/8	5 3/4	190
4	CTC-400	3/8 - 16	6 3/4	6	3/8	6 1/4	190

\*Insulated Bushing not included



Type CTGC Cable Tray Grounding clamps for use on most types of cable trays. See page MA1.

PATENTED

### How Tray-Bond™ Clamps Work:


The edge of the cable tray rail provides the surface on which the serrations in the clamps grounding pad "bite" into the tray. The lower portion of the clamp has a sharp triangular edge which grabs the underside of the rail. As the U-bolt is tightened, all the force is concentrated in the clamping jaws thus providing an excellent grounding path and high strength mechanical attachment.

### Material/Finish:

Malleable Iron/Mechanically Galvanized  
U-Bolts and Nuts: Steel/Mechanically Galvanized

### Third Party Certification:

 UL Listed: E-24264

 CSA Certified: 009795 for rigid and EMT only

### Applicable Third Party Standards:

UL Standard: 467

CSA Standard: C22.2 No. 18

