

Aluminum Conduit Bodies

For Rigid Conduit & IMC

Types LB, T, LL, LR, C

Use:

To provide access to conductors for pulling, splicing, maintenance and future changes/upgrades. Allows connection of straight conduit runs, branch conduit runs and 90° bends.

Features:

- Tapered threaded hubs (NPT).
- Raintight when used with gasketed covers.
- For covers and gaskets, see Page AC5.
- Internal volume and maximum wire clearly marked on castings.

Material/Finish:


½" - 2" Trade Size


Die-cast Copper-free Aluminum/
Aluminum Enamel

2½" - 4" Trade Size

Sand-cast Copper-free Aluminum/
Aluminum Enamel

Third Party Certification:

 UL Listed: E-18095
Suitable for wet locations when used with gasketed covers.

 CSA Certified: 009795
Suitable for wet locations when used with gasketed covers.

Applicable Third Party Standards:

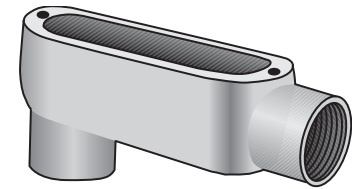
UL Standard: 514A
CSA Standard: C22.2 No. 18
Fed Spec: A-A-50563
NEMA: FB-1, FB-2.10

Dimensional Data:

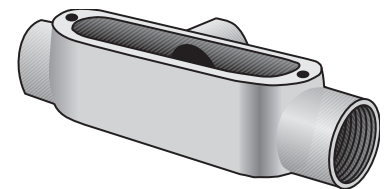
See Pages AC6, AC7

Note: Conduit bodies are suitable for use in Class I, Div. 2 hazardous locations per NEC Section 501-4(B).

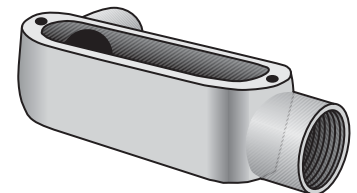
Trade Size (inches)	Catalog Number Die-Cast	Catalog Number Sand-Cast
½	LB-50A	
¾	LB-75A	
1	LB-100A	
1¼	LB-125A	
1½	LB-150A	
2	LB-200A	
2½		LB-250A
3		LB-300A
3½		LB-350A
4		LB-400A
½	T-50A	
¾	T-75A	
1	T-100A	
1¼	T-125A	
1½	T-150A	
2	T-200A	
2½		T-250A
3		T-300A
3½		T-350A
4		T-400A
½	LL-50A	
¾	LL-75A	
1	LL-100A	
1¼	LL-125A	
1½	LL-150A	
2	LL-200A	
2½		LL-250A
3		LL-300A
3½		LL-350A
4		LL-400A
½	LR-50A	
¾	LR-75A	
1	LR-100A	
1¼	LR-125A	
1½	LR-150A	
2	LR-200A	
2½		LR-250A
3		LR-300A
3½		LR-350A
4		LR-400A
½	C-50A	
¾	C-75A	
1	C-100A	
1¼	C-125A	
1½	C-150A	
2	C-200A	
2½		C-250A
3		C-300A
3½		C-350A
4		C-400A



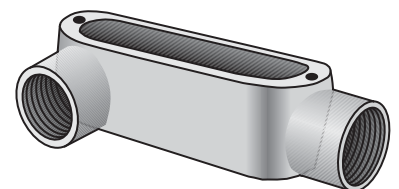
Type LB-A



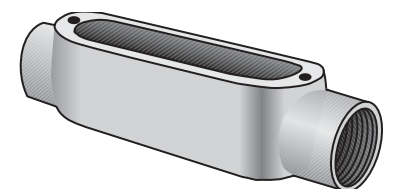
Type T-A



Type LL-A



Type LR-A



Type C-A

Aluminum Conduit Bodies

For Rigid Conduit & IMC

Types TB, X

Use:

To provide access to conductors for pulling, splicing, maintenance and future changes/upgrades. Allows connection of straight conduit runs, branch conduit runs and 90° bends.

Features:

- Tapered threaded hubs (NPT).
- Raintight when used with gasketed covers.
- For covers and gaskets, see Page AC5.
- Internal volume and maximum wire clearly marked on castings.

Material/Finish:

½" - 2" Trade Size
Sand-cast Copper-free Aluminum/
Aluminum Enamel

UL Third Party Certification:

UL Listed: E-18095
Suitable for wet locations when used with gasketed covers.

CSA Certified: LR-9795

Suitable for wet locations when used with gasketed covers.

Applicable Third Party Standards:

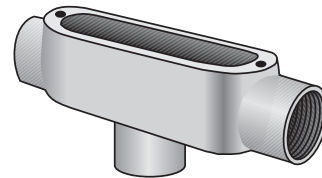
UL Standard: 514A
CSA Standard: C22.2 No. 18
Fed Spec: A-A-50563
NEMA: FB-1, FB-2.10

Dimensional Data:

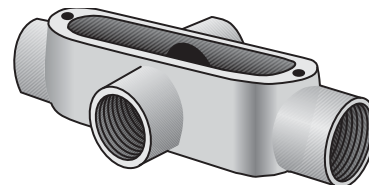
See Page AC6 - AC7.

Note: Conduit bodies are suitable for use in Class I, Div. 2 hazardous locations per NEC Section 501-4(B).

Trade Size (inches)	Catalog Number Sand-Cast
½	TB-50A
¾	TB-75A
1	TB-100A
1¼	TB-125A
1½	TB-150A
2	TB-200A
½	X-50A
¾	X-75A
1	X-100A
1¼	X-125A
1½	X-150A
2	X-200A



Type TB-A



Type X-A

Conduit Body, Cover & Gasket Assemblies

For Rigid Conduit & IMC

Types LB, T, LL, LR, C

Use:

To provide access to conductors for pulling, splicing, maintenance and future changes/upgrades. Allows connection of straight conduit runs, branch conduit runs and 90° bends.

Features:

- Tapered threaded hubs (NPT)
- Packaged complete under one Catalog Number
- Ready to use

Material/Finish

Conduit Body - Die-cast, Copper-free
Aluminum with Aluminum Enamel
Cover - Type BS Aluminum
Gasket - Type SGN Neoprene

Third Party Certification:



UL Listed:
E-18095
Suitable for wet locations.



CSA Certified:
LR-9795
Suitable for wet locations.

Applicable Third Party Standards:

UL Standard: 514A
CSA Standard: C22.2 No. 18
Fed Spec: A-A-50563
NEMA: FB-1, FB-2.10

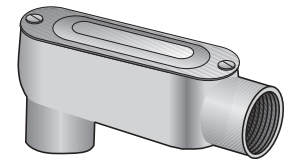
Dimensional Data:

See Pages AC6 - AC7.

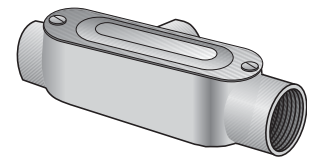
Note: For additional information, please refer to:

- Conduit Bodies on page AC1.
- Covers and Gaskets on page AC5.

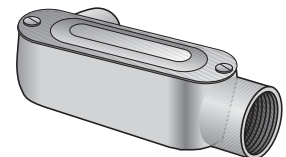
Trade Size (inches)	Catalog Number Die-Cast
½	LB-50ACG
¾	LB-75ACG
1	LB-100ACG
1¼	LB-125ACG
1½	LB-150ACG
2	LB-200ACG
½	T-50ACG
¾	T-75ACG
1	T-100ACG
1¼	T-125ACG
1½	T-150ACG
2	T-200ACG
½	LL-50ACG
¾	LL-75ACG
1	LL-100ACG
1¼	LL-125ACG
1½	LL-150ACG
2	LL-200ACG
½	LR-50ACG
¾	LR-75ACG
1	LR-100ACG
1¼	LR-125ACG
1½	LR-150ACG
2	LR-200ACG
½	C-50ACG
¾	C-75ACG
1	C-100ACG
1¼	C-125ACG
1½	C-150ACG
2	C-200ACG



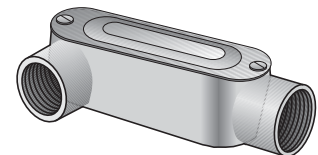
Type LB-ACG



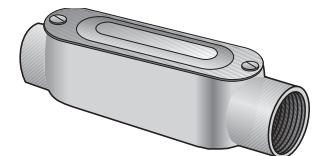
Type T-ACG



Type LL-ACG



Type LR-ACG



Type C-ACG

Aluminum Conduit Bodies

Set Screw Type for EMT (Thinwall Conduit)

Types LB, T, LL, LR, C

Use:

To provide access to conductors for pulling, splicing, maintenance and future changes/upgrades. Allows connection of straight conduit runs, branch conduit runs and 90° bends.


Features:

- Slotted hex head steel hardened cup-point set screw for EMT.
- Internal volume and maximum wire clearly marked on castings.
- For covers and gaskets, see Page AC5.

Material/Finish:

Die-cast Copper-free Aluminum/
Aluminum Enamel

Third Party Certification:

 UL Listed: E-18095

 CSA Certified: 009795

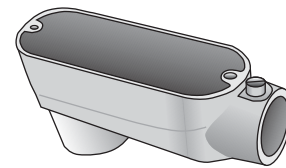
Applicable Third Party Standards:

UL Standard: 514A
CSA Standard: C22.2 No. 18
Fed Spec: A-A-50563
NEMA: FB-1, FB-2.10

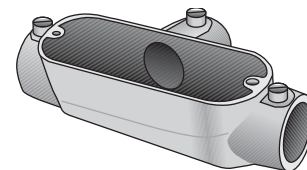
Dimensional Data:

See Pages AC8 - AC9.

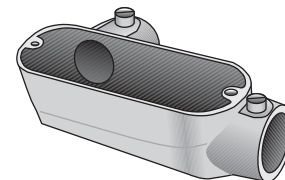
Trade Size (inches)	Catalog Number
1/2	LB-50A-TW
3/4	LB-75A-TW
1	LB-100A-TW
1 1/4	LB-125A-TW
1 1/2	LB-150A-TW
2	LB-200A-TW
1/2	T-50A-TW
3/4	T-75A-TW
1	T-100A-TW
1 1/4	T-125A-TW
1 1/2	T-150A-TW
2	T-200A-TW
1/2	LL-50A-TW
3/4	LL-75A-TW
1	LL-100A-TW
1 1/4	LL-125A-TW
1 1/2	LL-150A-TW
2	LL-200A-TW
1/2	LR-50A-TW
3/4	LR-75A-TW
1	LR-100A-TW
1 1/4	LR-125A-TW
1 1/2	LR-150A-TW
2	LR-200A-TW
1/2	C-50A-TW
3/4	C-75A-TW
1	C-100A-TW
1 1/4	C-125A-TW
1 1/2	C-150A-TW
2	C-200A-TW



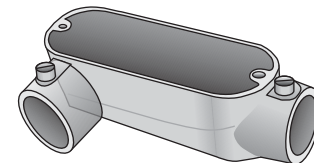
Type LB-TW



Type T-TW



Type LL-TW



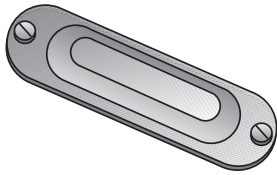
Type LR-TW



Type C-TW

Covers & Gaskets

For O-Z/Gedney Aluminum Conduit Bodies



Type BS-A

Type BS-A Domed Top Design Cover

Use:

To cover conduit body openings.

Material/Finish:

Stamped Copper-free Aluminum
Stainless Steel Screws
Natural Finish

Third Party Certification:



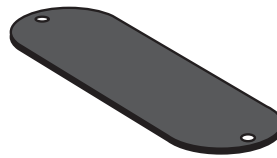
UL Listed:
E-18095



CSA Certified:
009795

Applicable Third Party Standards:

UL Standard: 514A
CSA Standard: C22.2 No. 18
Fed Spec: A-A-50563
NEMA: FB-1, FB-2.10



Type SG & SGN

Type SG & SGN Solid Cover Sealing Gasket

Use:

To provide a worry-free, raintight seal when used with Type BS-A covers.

Material:

Velbuna Composition
Closed-Cell Neoprene

Material:

Temperature Rating: 212°F/100°C.

Trade Size (inches)	Catalog Number
1/2	BS-50A
3/4	BS-75A
1	BS-100A
1 1/4-1 1/2	BS-125A
2	BS-200A
2 1/2-3	BS-250A
3 1/2-4	BS-350A*

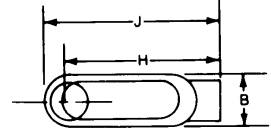
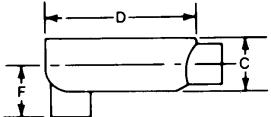
Trade Size (inches)	Catalog Number Velbuna	Catalog Number Neoprene
1/2	SG-50	SGN-50
3/4	SG-75	SGN-75
1	SG-100	SGN-100
1 1/4-1 1/2	SG-125	SGN-125
2	SG-200	SGN-200
2 1/2-3	SG-250	SGN-250
3 1/2-4	SG-350	SGN-350

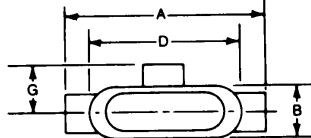

* Flat Top Design Cover

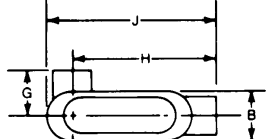
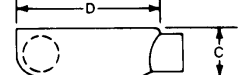
Aluminum Conduit Bodies

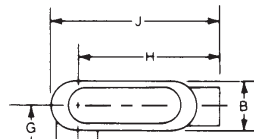
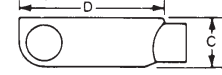
For Rigid Conduit & IMC

Dimensional Data:

Type LB-A	Catalog Number	Trade Size	Dimensions in Inches						Volume Cu. In.	Max No. Conductors
			B	C	D	F	H	J		
	LB-50A	1/2	1 1/4	1 3/8	4	1 3/8	3 5/8	4 1/2	4.3	N/A
	LB-75A	3/4	1 1/2	1 5/8	4 1/4	1 5/8	4 1/4	5 1/8	7.3	3 #6AWG
	LB-100A	1	1 3/4	2	5 1/4	2	5	6 1/8	12.2	3 #4AWG
	LB-125A	1 1/4	2 1/2	2 3/8	7 1/4	2 1/4	6 1/2	7 3/8	34.0	3 #2AWG
	LB-150A	1 1/2	2 3/2	2 3/4	7 1/4	2 1/4	6 1/2	7 3/8	35.8	3 #1/0AWG
	LB-200A	2	3 3/8	3 3/8	9 1/2	2 5/8	8 1/4	10 3/8	77.5	3 #4/0AWG
	LB-250A	2 1/2	4 3/8	4	12 3/8	3 3/8	11 3/8	13 3/8	142.0	3 #300MCM
	LB-300A	3	4 3/4	4 3/4	12 3/4	3 3/4	11 3/4	13 3/4	173.0	3 #400MCM
	LB-350A	3 1/2	5 3/8	5 3/8	15	4 1/4	13 3/8	16 1/4	292.0	3 #500MCM
	LB-400A	4	5 3/4	5 3/4	15	4 1/2	14	16 3/4	324.0	3 #500MCM

Type T-A	Catalog Number	Trade Size	Dimensions in Inches					Volume Cu. In.	Max No. Conductors
			A	B	C	D	G		
	T-50A	1/2	5	1 1/4	1 3/8	4	1 1/2	4.2	N/A
	T-75A	3/4	5 3/8	1 1/2	1 5/8	4 1/4	1 5/8	7.1	3 #6AWG
	T-100A	1	6 3/4	1 3/4	2	5 1/4	2	12.0	3 #4AWG
	T-125A	1 1/4	8 3/8	2 1/2	2 3/8	7 1/4	2 1/4	31.5	3 #2AWG
	T-150A	1 1/2	8 3/4	2 3/2	2 3/4	7 1/4	2 1/4	34.5	3 #1AWG
	T-200A	2	10 3/8	3 3/8	3 3/8	9 1/2	2 5/8	75.0	3 #2/0AWG
	T-250A	2 1/2	15 3/8	4 3/8	4	12 3/8	3 3/8	142.0	3 #4/0AWG
	T-300A	3	15 3/4	4 3/8	4 3/4	12 3/8	3 3/8	182.0	3 #4/0AWG
	T-350A	3 1/2	18 3/4	5 1/2	5 1/4	14 3/8	4 3/8	290.0	3 #350MCM
	T-400A	4	18 3/4	5 1/2	5 1/2	14 3/8	4 3/8	320.0	3 #350MCM

Type LL-A	Catalog Number	Trade Size	Dimensions in Inches						Volume Cu. In.	Max No. Conductors
			B	C	D	G	H	J		
	LL-50A	1/2	1 1/4	1 3/8	4	1 1/2	3 3/8	4 1/2	4.3	N/A
	LL-75A	3/4	1 1/2	1 5/8	4 1/4	1 5/8	4 1/4	5 1/8	7.3	3 #6AWG
	LL-100A	1	1 3/4	2	5 1/4	2	5	6 1/8	12.2	3 #4AWG
	LL-125A	1 1/4	2 1/2	2 3/8	7 1/4	2 1/4	6 1/2	7 3/8	34.0	3 #2AWG
	LL-150A	1 1/2	2 3/2	2 3/4	7 1/4	2 1/4	6 1/2	7 3/8	35.8	3 #1AWG
	LL-200A	2	3 3/8	3 3/8	9 1/2	2 5/8	7 3/8	10 3/8	77.5	3 #2/0AWG
	LL-250A	2 1/2	4 3/8	3 3/8	12 3/8	3 3/8	11 3/8	13 3/8	142.0	3 #4/0AWG
	LL-300A	3	4 3/4	4 3/4	12 3/4	3 3/4	11 3/4	13 3/4	173.0	3 #4/0AWG
	LL-350A	3 1/2	5 3/8	5 1/4	15	4 1/2	13 3/8	16 1/4	292.0	3 #350MCM
	LL-400A	4	5 3/4	5 3/8	15	4 3/4	13 3/8	16 3/4	324.0	3 #350MCM

Type LR-A	Catalog Number	Trade Size	Dimensions in Inches						Volume Cu. In.	Max No. Conductors
			B	C	D	G	H	J		
	LR-50A	1/2	1 1/4	1 3/8	4	1 1/2	3 3/8	4 1/2	4.3	N/A
	LR-75A	3/4	1 1/2	1 5/8	4 1/4	1 5/8	4 1/4	5 1/8	7.3	3 #6AWG
	LR-100A	1	1 3/4	2	5 1/4	2	5	6 1/8	12.2	3 #4AWG
	LR-125A	1 1/4	2 1/2	2 3/8	7 1/4	2 1/4	6 1/2	7 3/8	34.0	3 #2AWG
	LR-150A	1 1/2	2 3/2	2 3/4	7 1/4	2 1/4	6 1/2	7 3/8	35.8	3 #1AWG
	LR-200A	2	3 3/8	3 3/8	9 1/2	2 5/8	7 3/8	10 3/8	77.5	3 #2/0AWG
	LR-250A	2 1/2	4 3/8	3 3/8	12 3/8	3 3/8	11 3/8	13 3/8	142.0	3 #4/0AWG
	LR-300A	3	4 3/4	4 3/4	12 3/4	3 3/4	11 3/4	13 3/4	173.0	3 #4/0AWG
	LR-350A	3 1/2	5 3/8	5 1/4	15	4 1/2	13 3/8	16 1/4	292.0	3 #350MCM
	LR-400A	4	5 3/4	5 3/8	15	4 1/2	13 3/8	16 3/4	350.0	3 #350MCM

Aluminum Conduit Bodies

For Rigid Conduit & IMC

Dimensional Data:

Type C-A	Catalog Number	Trade Size	Dimensions in Inches				Volume Cu. In.	Max No. Conductors
			A	B	C	D		
	C-50A	1/2	5	1 1/4	1 3/8	4	4.2	N/A
	C-75A	3/4	5 5/8	1 1/2	1 3/8	4 5/8	7.1	3 #6AWG
	C-100A	1	6 3/4	1 3/4	2	5 3/8	12.0	3 #4AWG
	C-125A	1 1/4	8 3/8	2 1/2	2 5/8	7 1/4	31.5	3 #2AWG
	C-150A	1 1/2	8 3/8	2 1/2	2 3/4	7 1/4	34.5	3 #1AWG
	C-200A	2	10 3/8	3 3/8	3 3/8	9 1/2	75.0	3 #2/0AWG
	C-250A	2 1/2	15 1/8	4 3/8	4	12 1/2	153.0	3 #4/0AWG
	C-300A	3	15 3/8	4 3/8	4 3/4	12 1/2	181.0	3 #4/0AWG
	C-350A	3 1/2	18 1/4	5 1/2	5 1/2	15	290.0	3 #350MCM
	C-400A	4	18 1/8	5 1/2	5 3/8	15	320.0	3 #350MCM

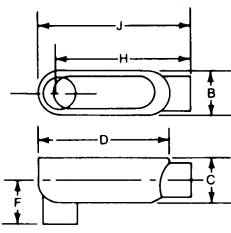
Type TB-A	Catalog Number	Trade Size	Dimensions in Inches						Volume Cu. In.	Max No. Conductors
			A	B	C	D	F			
	TB-50A	1/2	5 1/4	1 1/4	1 3/8	4	1 3/8	4.0	N/A	
	TB-75A	3/4	6	1 1/2	1 3/8	4 3/8	1 1/2	7.0	3 #6AWG	
	TB-100A	1	7 1/4	1 3/4	2	5 3/8	1 3/8	13.0	3 #4AWG	
	TB-125A	1 1/4	9 3/8	2 3/8	2 3/8	7 1/4	2 1/4	32.0	3 #2AWG	
	TB-150A	1 1/2	9 3/4	2 3/8	2 3/4	7 1/4	2 3/8	34.0	3 #1AWG	
	TB-200A	2	11 3/8	3 3/8	3 1/2	9 3/8	2 3/4	70.0	3 #2/0AWG	

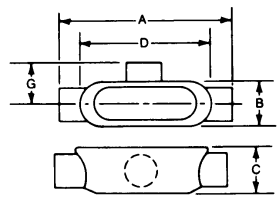
Type X-A	Catalog Number	Trade Size	Dimensions in Inches					Volume Cu. In.	Max No. Conductors
			A	B	C	D	E		
	X-50A	1/2	5 3/8	1 3/8	1 3/8	4	2 3/4	4.0	N/A
	X-75A	3/4	6 1/8	1 3/8	1 3/8	4 5/8	3 3/8	7.0	3 #6AWG
	X-100A	1	7 1/8	1 3/8	2	5 3/8	3 1/2	12.0	3 #4AWG
	X-125A	1 1/4	9 3/8	2 3/8	2 5/8	7 1/4	4 1/2	32.0	3 #2AWG
	X-150A	1 1/2	9 3/4	2 3/8	2 7/8	7 1/4	4 3/8	36.0	3 #1AWG
	X-200A	2	11 3/8	3 3/8	3 1/2	9 1/2	5 1/2	70.0	3 #2/0AWG

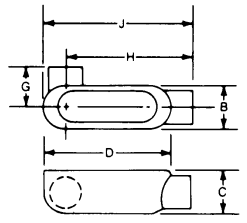
Aluminum Conduit Bodies

Set Screw Type for EMT (Thinwall Conduit)

Dimensional Data:

Type LB	Catalog Number	Trade Size	Dimensions in Inches						Volume Cu. In.	Max No. Conductors
			B	C	D	F	H	J		
	LB-50A-TW	1/2	1 1/4	1 1/8	4	1 1/8	3 3/8	4 1/2	4.3	N/A
	LB-75A-TW	3/4	1 1/2	1 1/8	4 5/8	1 1/8	4 1/4	5 1/8	7.3	3 #6AWG
	LB-100A-TW	1	1 3/4	2	5 5/8	2	5	6 1/8	12.2	3 #4AWG
	LB-125A-TW	1 1/4	2 1/2	2 3/8	7 1/4	2 1/4	6 1/2	7 1/8	34.0	3 #2AWG
	LB-150A-TW	1 1/2	2 1/2	2 3/4	7 1/4	2 1/4	6 1/2	7 3/8	35.8	3 #1/0AWG
	LB-200A-TW	2	3 3/8	3 3/8	9 1/2	2 5/8	8 1/4	10 1/8	77.5	3 #4/0AWG

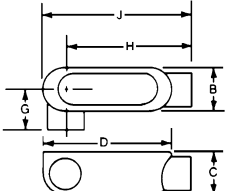
Type T	Catalog Number	Trade Size	Dimensions in Inches					Volume Cu. In.	Max No. Conductors
			A	B	C	D	G		
	T-50A-TW	1/2	5	1 1/4	1 3/8	4	1 1/2	4.2	N/A
	T-75A-TW	3/4	5 5/8	1 1/2	1 1/8	4 5/8	1 1/8	7.1	3 #6AWG
	T-100A-TW	1	6 3/4	1 3/4	2	5 1/4	2	12.0	3 #4AWG
	T-125A-TW	1 1/4	8 3/8	2 1/2	2 3/8	7 1/4	2 1/4	31.5	3 #2AWG
	T-150A-TW	1 1/2	8 3/8	2 1/2	2 3/4	7 1/4	2 1/4	34.5	3 #1AWG
	T-200A-TW	2	10 3/8	3 3/8	3 3/8	9 1/2	2 3/8	75.0	3 #2/0AWG

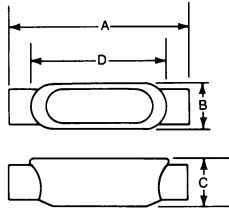
Type LL	Catalog Number	Trade Size	Dimensions in Inches						Volume Cu. In.	Max No. Conductors
			B	C	D	G	H	J		
	LL-50A-TW	1/2	1 1/4	1 1/8	4	1 1/2	3 3/8	4 1/2	4.3	N/A
	LL-75A-TW	3/4	1 1/2	1 1/8	4 5/8	1 1/8	4 1/4	5 1/8	7.3	3 #6AWG
	LL-100A-TW	1	1 3/4	2	5 5/8	2	5	6 1/8	12.2	3 #4AWG
	LL-125A-TW	1 1/4	2 1/2	2 3/8	7 1/4	2 1/4	6 1/2	7 1/8	34.0	3 #2AWG
	LL-150A-TW	1 1/2	2 1/2	2 3/4	7 1/4	2 1/4	6 1/2	7 3/8	35.8	3 #1AWG
	LL-200A-TW	2	3 3/8	3 3/8	9 1/2	2 5/8	7 1/4	10 1/8	77.5	3 #2/0AWG

Aluminum Conduit Bodies

Set Screw Type for EMT (Thinwall Conduit)

Dimensional Data:

Type LR	Catalog Number	Trade Size	Dimensions in Inches						Volume Cu. In.	Max No. Conductors
			B	C	D	G	H	J		
	LR-50A-TW	1/2	1 1/4	1 5/8	4	1 1/2	3 5/8	4 1/2	4.3	N/A
	LR-75A-TW	3/4	1 1/2	1 5/8	4 5/8	1 5/8	4 1/4	5 1/8	7.3	3 #6AWG
	LR-100A-TW	1	1 3/4	2	5 5/8	2	5	6 5/8	12.2	3 #4AWG
	LR-125A-TW	1 1/4	2 1/2	2 5/8	7 1/4	2 1/4	6 1/2	7 7/8	34.0	3 #2AWG
	LR-150A-TW	1 1/2	2 1/2	2 3/4	7 1/4	2 1/4	6 1/2	7 7/8	35.8	3 #1AWG
	LR-200A-TW	2	3 3/8	3 3/8	9 1/2	2 5/8	7 5/8	10 5/8	77.5	3 #2/0AWG

Type C	Catalog Number	Trade Size	Dimensions in Inches				Volume Cu. In.	Max No. Conductors
			A	B	C	D		
	C-50A-TW	1/2	5	1 1/4	1 5/8	4	4.2	N/A
	C-75A-TW	3/4	5 5/8	1 1/2	1 5/8	4 5/8	7.1	3 #6AWG
	C-100A-TW	1	6 3/4	1 3/4	2	5 5/8	12.0	3 #4AWG
	C-125A-TW	1 1/4	8 5/8	2 1/2	2 5/8	7 1/4	31.5	3 #2AWG
	C-150A-TW	1 1/2	8 5/8	2 1/2	2 3/4	7 1/4	34.5	3 #1/0AWG
	C-200A-TW	2	10 5/8	3 3/8	3 3/8	9 1/2	75.0	3 #3/0AWG