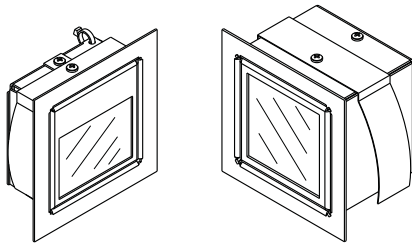


Data and specifications subject to change without notice

Project name	Type
Order number	
Date	



2-300 Style

2-310 Style

WALL LIGHT

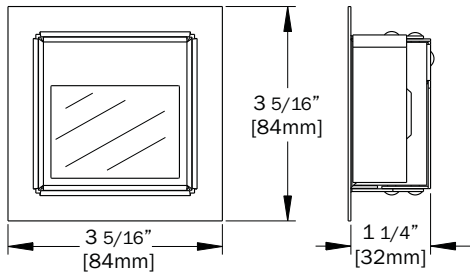
G4 Bi-Pin Halogen or T3 Xenon

SPECIFICATIONS

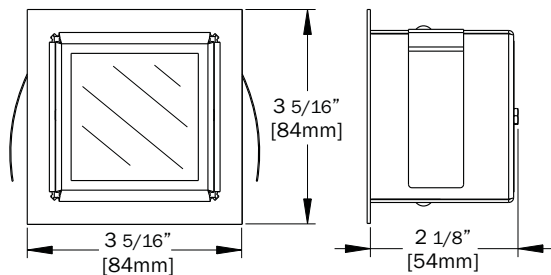
The Wall Light is a recessed architectural luminaire that can be mounted in insulated or non-insulated walls, and concrete pour wall installations.

- ◆ Rated up to 20W max with halogen or xenon lamps
- ◆ Damp location listed
- ◆ Frosted lens is standard, color dichroic lenses are available
- ◆ Optional housing is made of 20 Ga. cold rolled steel with black powder coated paint finish, has a depth of 3 1/2", and ships complete with an integral electronic transformer

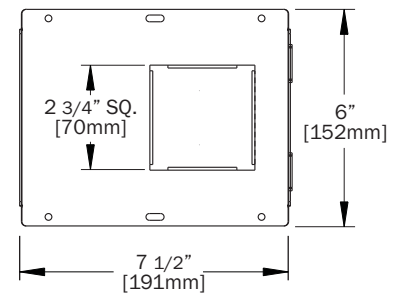
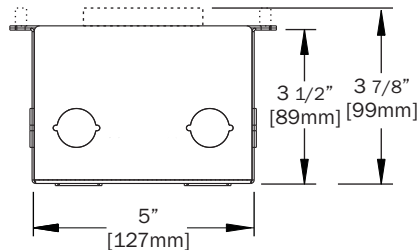
Applications: The Wall Light can be used for step lights, wall markers for hallways, or where pathway lighting may be required.



2-300 Style



2-310 Style



Insulated / Non I/C / Concrete Pour Housing (Dashed Lines)

ORDER GUIDE

HOUSING	VOLTAGE	TRIM	FINISH
No Housing (Max 10W)	120	2-300	01 - White
2-070-W/L ¹ (Max 20W)	277	2-310	04 - Black
2-070-W/L-C/H ² (Max 20W)			15 - Natural Aluminum

Note:

- 1) Non-insulated walls, max 20W halogen or xenon lamps
Insulated walls, max 10W halogen lamps, or max 20W xenon lamps
- 2) Concrete Housing max 20W halogen or xenon lamps. Concrete Housing Version has alternate face plate & additional mounting hardware included.

*Spec sheets are subject to change without notice

