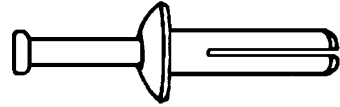


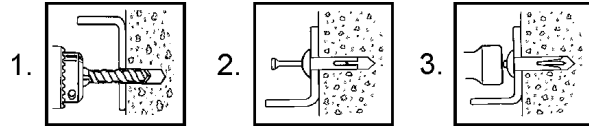
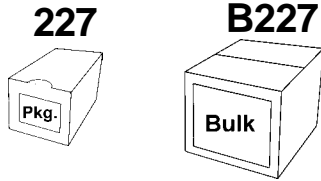
NAIL-IN ANCHORS

Zinc Alloy Body/Zinc Plated Pin Medium Duty
Concrete or Masonry Anchor



227
Series

Nail-In Anchors are a nail drive anchor used in cement block, solid concrete, brick or stone. The anchor has a corrosion resistant zinc alloy coating and carbon steel nail. As the nail is driven into the anchor body, each half of the expansion mechanism is compressed against the walls of the drilled hole. Drill hole 1/4" deeper than the required embedment. Clean hole of dust after drilling. Insert anchor through the fixture and hammer in the nail head until flush.



Load Capacities for Block

Anchor Size	Depth	Tension (Lbs)	Shear (Lbs)
1/4"	1"	590	1320
1/4"	1-1/4"	800	1320
1/4"	2"	1000	1320

Load Capacities for Brick

Anchor Size	Depth	Tension (Lbs)	Shear (Lbs)
1/4"	1"	820	1400
1/4"	1-1/4"	950	1400
1/4"	2"	1115	1400

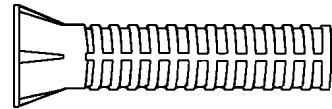
LIST PRICE PER 100 PIECES

Size No.	Anchor Diameter and Length	CASE-Plated 227	Pkg Qty	Case Qty	BULK-Plated B227	Bulk Qty	Approx. Wt. 100 Pcs.	Hole Drill Size
-104	1/4x1	\$16.51	40	640	\$14.86	2500	1.9	1/4
-106	1/4x1-1/4	17.92	40	640	16.51	2000	2.2	1/4
-108	1/4x1-1/2	20.28	30	480	18.39	1800	2.5	1/4
-110	1/4x2	24.52	30	480	22.17	1400	3.1	1/4

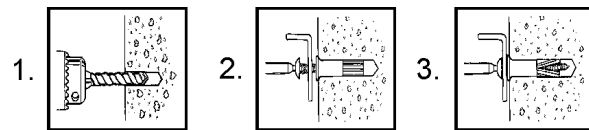
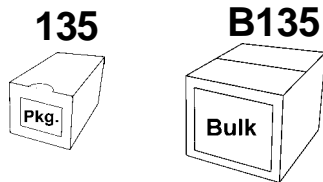
135
Series

LEAD ANCHORS

Lead Alloy Medium Duty
Concrete or Masonry Anchor



Paulin Lead Anchors are made entirely of lead alloy which is soft enough for easy installation, yet hard enough to ensure holding strength. This anchor is recommended for light duty workloads where holding strength is at a minimum. Drill hole same size as diameter of anchor to the depth required. Clean hole of dust after drilling. Insert anchor flush to the surface of the material. Insert screw through the fixture, into the anchor and tighten.



Load Capacities for Block

Anchor Size	Depth	Tension (Lbs)	Shear (Lbs)
6-8	3/4	70	200
6-8	1	100	280
6-8	1-1/2	200	300
10-14	1	410	520
10-14	1-1/2	640	900

Load Capacities for Brick

Anchor Size	Depth	Tension (Lbs)	Shear (Lbs)
6-8	3/4	95	200
6-8	1	200	420
6-8	1-1/2	300	460
10-14	1	410	520
10-14	1-1/2	790	900

LIST PRICE PER 100 PIECES

Size No.	Anchor Diameter and Length	CASE-Plated 135	Pkg Qty	Case Qty	BULK-Plated B135	Bulk Qty	Approx. Wt. 100 Pcs.	Hole Drill Size
-830	6-8x3/4	\$14.15	100	3000	\$12.73	4000	1.1	1/4
-832	6-8x1	16.51	100	3000	14.86	2500	1.2	1/4
-834	6-8x1-1/2	19.34	100	1600	17.40	2000	2.0	1/4
-838	10-14x1	19.34	100	1600	17.40	2000	2.0	5/16
-840	10-14x1-1/2	25.47	100	1200	22.92	1500	2.8	5/16

Note: Please use Series and Size No. when ordering:

Example: 6-8 x 3/4 Lead Anchors
Series Size No.
Case - 135 -830
Bulk - B135 -830