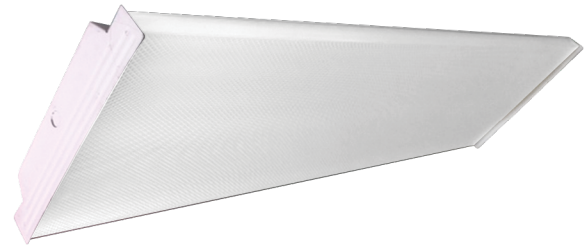


F2WSN - F2WWN

SPECIFICATION GRADE WRAPAROUND

1, 2, 3 or 4 Lamps



DESCRIPTION

Stanpro's F2WSN and F2WWN are ideally suited for a variety of commercial applications (schools, corridors, restrooms, etc.) where a decorative and robust fixture with uniform and efficient lighting is required. They can be surface or row mounted and are available in either 24, 36 or 48 inches using T5, T5HO or T8 lamps.

POWER RANGE

- 17W to 32W T8 lamp
- 14W to 28W T5 lamp
- 24W to 54W T5HO lamp

HOUSING

Die-formed cold rolled steel finished in post-painted high-gloss and high reflectance (85%) white. The body and the ends are one piece, increasing strength and rigidity.

BALLAST

T5 & T5HO: Our fixtures come standard with electronic **program start** ballasts.
T8: Our fixtures come standard with electronic **instant start** ballasts (not intended for use with occupancy sensors).

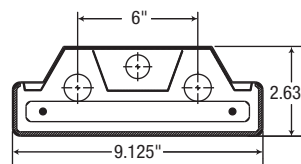
Dimming ballasts and other ballast types are optional.

LENS

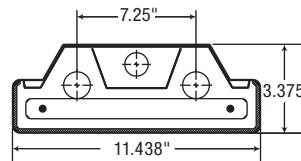
Prismatic acrylic R19 pattern (0.075" thickness).

DIMENSIONS

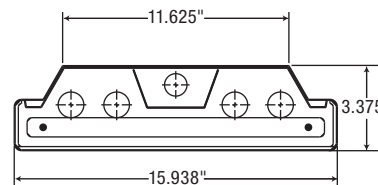
Cross Section View – F2WSN



Cross Section View - F2WWN 1 & 2 lamps



Cross Section View – F2WWN 3 & 4 lamps



ORDERING GUIDE

Series	Size	Nbr of lamps	Lamp type	Wattage	Operation	Voltage	Options
F2WWN	24 - 24"	2 - 2 lamps	T8	17 - 17W	Blank - AC only DL1 - Dual AC & emergency back-up 1 lamp DL2 - Dual AC & emergency back-up 2 lamps	A - 120V H - 347V W - 120-277V	DIM1 - 0-10VDC dimming ballast 120V, 120-277V (347V available for T8 lamps only) DIM2 - Line voltage dimming, ballast 120V, 120-277V LBF - Low ballast factor <0.85 (T8 only) HBF - High ballast factor >1.0 (T8 only) PSP - Program start parallel ballast
			T5	14 - 14W			
			T5HO	24 - 24W			
	36 - 36"	2 - 2 lamps	T8	25 - 25W			
			T5	21 - 21W			
			T5HO	39 - 39W			
	48 - 48"	1 - 1 lamp 2 - 2 lamps 3 - 3 lamps 4 - 4 lamps	T8	32 - 32W			
			T5	28 - 28W			
			T5HO	54 - 54W			
F2WSN	48 - 48"	2 - 2 lamps	T8	32 - 32W			
			T5	28 - 28W			
			T5HO	54 - 54W			

NOTE: Due to the fact that not all lamp/ballast combinations are compatible, please consult factory.