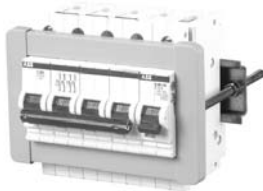


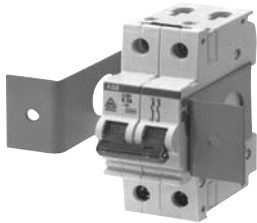
# Accessories S200



S500-ME2



MB-CL



MB-3PD



SA1



SA2



S2C-DH

Electrical accessories	Catalog number	List price	Delivery class	Suggested order quantities	Wgt. kg (1 pc.)
<b>Front mounting kit</b> For 2 poles For 2 – 5 poles For 2 – 10 poles	S500-ME1 S500-ME2 S500-ME3		A	1	0.060 0.082 0.102

Includes flange, mounting rail and hardware.

<b>Front mounting clip</b> For 1 – 4 poles	MB-CL		B	1	0.057
---	-------	--	---	---	-------

Simple mounting clip for up to four module mounting.

<b>Front mounting bracket</b> For 1 – 2 poles For 1 – 3 poles	MB-2PD MB-3PD		B	1	0.071
---	------------------	--	---	---	-------

For flush mounting of three pole MCBs: includes hardware.

<b>Locking device</b> Adaptor only Padlock only w/ 2 keys	SA1 SA2		A	10	— —
---	------------	--	---	----	--------

Allows breaker to be locked in ON or OFF position.

<b>Labeling accessory</b> 1 sheet = 40 blank labels 1 sheet = 40 numbered labels	BS BS/40		A	1	—
--	-------------	--	---	---	---

<b>Enclosure, IP55 (IEC only)</b> For 4 modules For 6 modules For 10 modules For 20 modules	12644 12646 12650 12652		B	1	0.230 0.307 0.581 1.162
---	----------------------------------	--	---	---	----------------------------------

Molded plastic complete with mounting rail and knock-outs for cable entries.

<b>Blanking plates</b> Single pole (set of 10)	BP-1P		B	1	—
---	-------	--	---	---	---

<b>Rotary mechanism</b>	S2C-DH		A	1	0.261
-------------------------	--------	--	---	---	-------

For use with 2, 3 and 4 pole S2 MCBs and disconnect switch selector handles with 5mm shaft.

### Delivery Class

- A - Standard item, stock to 2 weeks lead time
- B - Stock to 4 weeks lead time
- C - 6 to 8 week lead time