

### TYPES K3A-U, KK3A-U

#### UNIVERSAL TERMINAL

A-26

(Three Conductor)  
For Aluminum and  
Copper Conductors

Dual-rated three-conductor lugs are constructed from high strength aluminum alloy and electro tin-plated to provide low contact resistance.

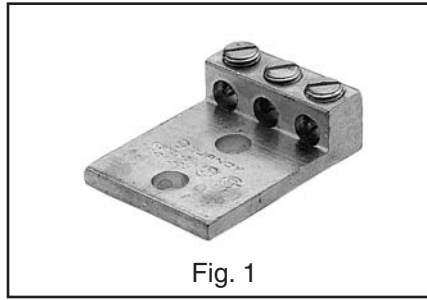


Fig. 1

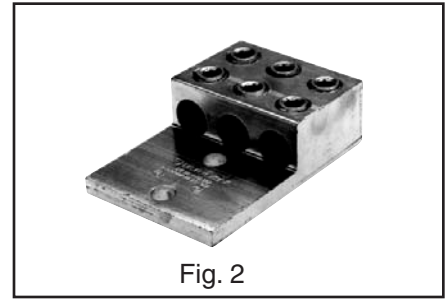


Fig. 2

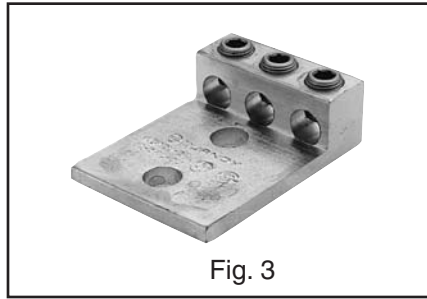
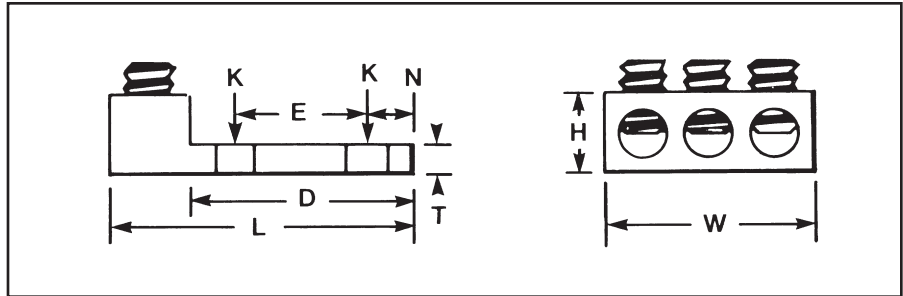


Fig. 3



CATALOG NUMBER*	FIG. NO.	WIRE RANGE ALUMINUM OR COPPER	K	STUD HOLE SIZE	DIMENSIONS						RECOMMENDED TIGHTENING ▲ TORQUE in-lb	
					D	L	N	W	E	T		H
K3A2U-2*	1	Three: 14 STR. - 2 STR.	11/32	5/16	1.63	2.19	.34	1.59	.88	.19	.62	50
K3A25U-2*	1	Three: 14 STR. - 1/0 STR.	7/16	3/8	2.09	2.91	.34	1.94	1.00	.25	.88	
K3A26U-2N	3	Three: 14 STR. - 2/0 STR.	9/16	1/2	3.06	3.75	.63	1.95	1.75	.19	1.79	275
K3A27U-2N	3	Three: 6 STR. - 3/0 STR.			3.00	3.88	.63	2.81		.31	1.12	
K3A29U-2N	3	Three: 6 STR. - 250			3.00	4.00	.63	2.81		.31	1.19	
K3A31U-2N	3	Three: 6 STR. - 350			3.00	4.31	.63	3.00		.31	1.38	
K3A36U-2N	3	Three: 2 STR. - 600			3.22	4.69	.63	3.63		.44	1.56	375
KK3A36U-2N	2	Three: 2 STR. - 600			3.00	5.63	.56	4.22		.44	1.69	
KK3A40U-2N	2	Three: 300 - 800			3.03	5.69	.63	4.81		.50	1.94	
KK3A44U-2N	2	Three: 500 - 1000			3.34	6.19	.63	4.75		.56	1.88	

\* Slotted screw.

\*\* "N" indicates NEMA standard stud holes.

▲ Listed torque values are for maximum conductor sizes accommodated. Consult UL486 Tables 7-4, 7-5, 7-6 for smaller conductor sizes. All 4N items See note page A-2