

PROJECT:

DATE:

CAT. NO:

TYPE:

NOTES:

## GENERAL

Surface mounted luminaire for indoor applications. Prismatic diffuser provides optimum light output suitable for continuous row mounting.

## CONSTRUCTION

Rigid housing fabricated from code gauge steel.

## FINISH

High gloss white polyester powder coat paint. Baked white enamel.

## SHIELDING

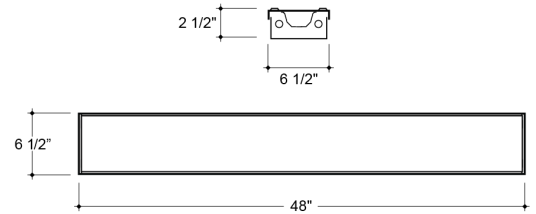
Clear acrylic prismatic wrap-around diffuser.

## ELECTRICAL

Instant start electronic ballast, 120V-50/60Hz.

## CERTIFICATIONS

CSA and/or UL approved.



## ORDER NUMBER

CEL						
SERIES	MODULE WIDTH	MODULE LENGTH	LAMPS	WATTS	VOLTAGE	BALLAST / DRIVER
	51 = 6 1/2" wide	2 = 2' 4 = 4'	2 = 2	17 = 17 (T8) 32 = 32 (T8)	120 = 120 Volts 277 = 277 Volts 347 = 347 Volts	IS = IS PRS = PRS RS = RS

HEAD OFFICE  
MONTREAL, QUEBEC  
PEERLESS, ELECTRIC CO.TLD  
9145 Boivin Street  
LaSalle, Quebec H8R 2E6  
Tel.: (514) 595-1671 Fax.: (514) 595-4411  
montreal@peerless-electric.com

TORONTO, ONTARIO  
PEERLESS, ELECTRIC CO.TLD  
19 Waterman Avenue, Suite 213  
Toronto, Ontario M4B 1Y2  
Tel.: (416) 751-5644 Fax.: (416) 595-5622  
toronto@peerless-electric.com

CALGARY, ALBERTA  
PEERLESS, ELECTRIC CO.TLD  
4120 23rd Street N.E.  
Calgary, Alberta T2E 6W9  
Tel.: (403) 291-6788 Fax.: (403) 595-6779  
calgary@peerless-electric.com

---

HEAD OFFICE

MONTREAL, QUEBEC  
PEERLESS, ELECTRIC CO.TLD  
9145 Boivin Street  
LaSalle, Quebec H8R 2E6  
Tel.: (514) 595-1671 Fax.: (514) 595-4411  
montreal@peerless-electric.com

TORONTO, ONTARIO  
PEERLESS, ELECTRIC CO.TLD  
19 Waterman Avenue, Suite 213  
Toronto, Ontario M4B 1Y2  
Tel.: (416) 751-5644 Fax.: (416) 595-5622  
toronto@peerless-electric.com

CALGARY, ALBERTA  
PEERLESS, ELECTRIC CO.TLD  
4120 23rd Street N.E.  
Calgary, Alberta T2E 6W9  
Tel.: (403) 291-6788 Fax.: (403) 595-6779  
calgary@peerless-electric.com