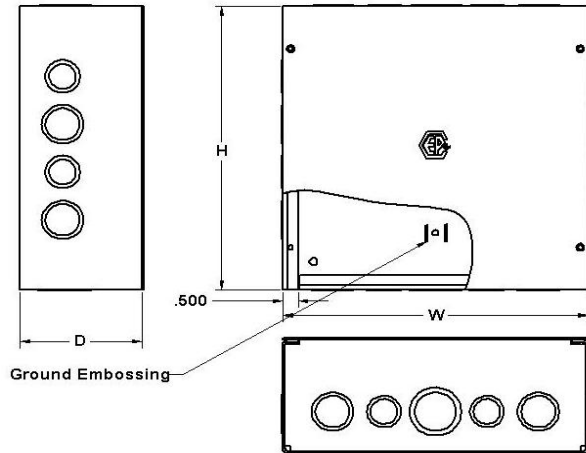
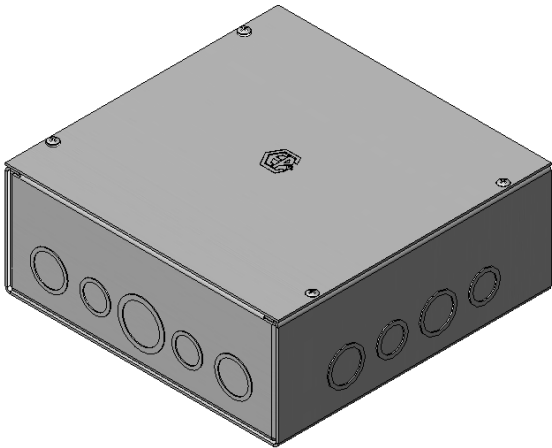


# CSA 1 PULL BOXES STEEL SCREW COVER

The D-STL series boxes are used as junction or pull boxes. They are suitable for indoor application, and surface mounting. They are manufactured from 16 Ga or 14 Ga steel. There are concentric knock-outs on 6x6x3 to 12x12x6. They come complete with screw cover, four internal mounting holes and a grounding provision .

Boxes marked with \* are finished with heat fused polyester powder, electrostatically applied on a phosphatized base, ASA-61 Grey. Enclosures not marked are pregalvanized steel. Options include: flush covers, back panel plates and custom paint colors.

**C.S.A. Certified / UL Listed**



<u>CAT No:</u>	<u>H</u>	<u>W</u>	<u>D</u>	<u>LBS</u>
*D-S-060603	6	6	3	2.0
*D-S-060604	6	6	4	2.5
*D-S-080804	8	8	4	4.0
*D-S-080806	8	8	6	32.0
*D-S-101004	10	10	4	4.0
*D-S-101006	10	10	6	15.0
*D-S-121204	12	12	4	5.0
*D-S-121206	12	12	6	22.0
*D-S-161606	16	16	6	14.0
*D-S-161608	16	16	8	14.0
D-G-181006	18	10	6	15.0
*D-S-181804	18	18	4	7.0
*D-S-181806	18	18	6	15.0
D-G-240604	24	6	4	13.0
D-G-240805	24	8	5	15.0
D-G-241006	24	10	6	19.0

<u>CAT No:</u>	<u>H</u>	<u>W</u>	<u>D</u>	<u>LBS</u>
*D-S-24246	24	24	6	28.0
*D-S-242408	24	24	8	33.0
*D-S-242410	24	24	10	37.0
D-G-302010	30	20	10	48.0
D-G-303010	30	30	10	65.0
D-G-360604	36	6	4	11.0
D-G-360805	36	8	5	22.0
D-G-361006	36	10	6	28.0
D-G-362412	36	24	12	69.0
D-G-480604	48	6	4	17.0
D-G-480805	48	8	5	29.0
D-G-481006	48	10	6	36.0
D-G-720604	72	6	4	27.0
D-G-720805	72	8	5	42.0
D-G-721006	72	10	6	53.0



604-540-0011

Fax: 604-540-0033 Toll Free: 1-888-222-CODE

sales@codeelectric.com