

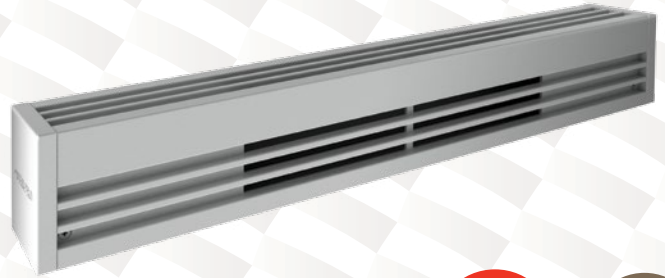
# ARCHITECTURAL BASEBOARD

ALUMINUM - ALUX3 SERIES



## THE ARCHITECTS' CHOICE

When it comes to aesthetics, the ALUX3 is the heating unit of choice. The ALUX3 features a winning combination of style and functionality with its extruded aluminum finish and its choice of watt densities. The ALUX3 is practically indestructible due to the quality of construction of its aluminum front panel with a thickness equivalent to 10 gauge. What's more, it offers the option of adding blank sections for a seamless, uniform look. Offices, large windows and schools can all benefit from the special features of this baseboard heater.



**EXTRUDED ALUMINUM FRONT COVER WITH A UNIQUE AND LUXURIOUS DESIGN**

**EXTREMELY SOLID, IMPACT AND RUST RESISTANT**

**THREE WATT DENSITIES OFFERED**

**PERSONALIZED INSTALLATION**

BLANK SECTIONS, PEDESTALS AND CLEAN BACKS AVAILABLE

**NEW STYLISH WHITE SATIN FINISH**

### IDEAL FOR:

OFFICES, BUSINESSES, HOTELS, LOBBIES, LARGE WINDOWS, SCHOOLS, HOSPITALS

### COLOURS

- standard: white, soft white
- luxurious finish: anodized aluminum (see price list)
- ORORA (optional): denim blue, midnight blue, turquoise, moss green, canary yellow, red, orange, anodized aluminum paint, gravel gray, charcoal, espresso, black (refer to [page 8 of the catalogue](#))

### FINISH

epoxy-polyester powdercoat or anodized aluminum finish

### MANUFACTURING

- 3 in. x 4 in. compact profile
- solid 20-gauge steel cabinet
- extremely resistant extruded aluminum front cover with a thickness equivalent to 10 gauge
- thermal protection with automatic reset
- full-length wireway
- pencil-proof openings of less than 1/4 in. (6.7 mm) prevent foreign objects from entering the unit

### ELEMENT

single tubular, stainless steel sheathed element with boxed aluminum fins for improved heat dissipation; the element is securely fastened at its center, floating in nylon sleeves at each end, eliminating expansion and contraction noises

### CONTROL

- wall thermostat (not included) – the use of an electronic thermostat is strongly recommended
- built-in tamper-proof thermostat accessible without removing front grille, installed in the left junction box only (optional)
- low voltage relay kit installed in the left junction box only (optional)

### INSTALLATION

- surface mounted
- wall or floor mounted with or without pedestal kit (optional)
- at least 3 in. from the floor ([BT] models only)
- wiring compartments at both ends of unit
- for a continuous effect, custom blank sections with a simple attach system are available (optional)

## ACCESSORIES

PRODUCT	DESCRIPTION	PRICE
ALUX3T12*	built-in tamper-proof single pole thermostat	104.00
ALUX3T22*	built-in tamper-proof double pole thermostat	174.00
ALUX3RE153*	built-in electronic low voltage relay [15 A @ 120 V-347 V]	54.75
ALUX3RE156*	built-in electronic low voltage relay [6 A @ 600 V]	96.75
ALUX3RE153T*	built-in electronic low voltage relay c/w transformer 24 V [15 A @ 208 V-347 V]	74.25
PK5*	pedestal kit - single (kit of two)	105.00
PK5CAP	anodized aluminum (paint) pedestal kit - single (kit of two)	115.00
PK5D*	pedestal kit - double (kit of two)	170.00
PK5DCAP	anodized aluminum (paint) pedestal kit - double (kit of two)	190.00
ALUX3JS*	joiner strip (2 in. – 51 mm)	93.50
ALUX3JSCAP	anodized aluminum (paint) joiner strip (2 in. – 51 mm)	103.00
ALUX3IC90*	inside corner (back measures 6 1/2 in. – 165 mm long on each side)	328.00
ALUX3IC90CA	anodized aluminum (finish) inside corner (back measures 6 1/2 in. – 165 mm long on each side)	361.00
ALUX3OC90*	outside corner (back measures 6 1/2 in. – 165 mm long on each side)	328.00
ALUX3OC90CA	anodized aluminum (finish) outside corner (back measures 6 1/2 in. – 165 mm long on each side)	361.00
ALUX3CB**	clean back (fully finished, no mounting holes or knockouts)	140.00
ALUX3BT*	air inlet from below/output from top	---
ALUX3SA*	full width flush fit stand height of 2 to 12 in – 51 mm to 305 mm	---
ALUX3SR*	full width recessed stand (39/64 in. – 16 mm) - Height of 2 inches – 51 mm	---

Electronic relays can receive a PWM (pulsed width modulation) or digital (on/off) signal

\* Add W for white or SW for soft white

\* Factory installed



# TECHNICAL SPECIFICATIONS

STANDARD DENSITY 250 W PER LINEAR FOOT		MEDIUM DENSITY 200 W PER LINEAR FOOT		LOW DENSITY 150 W PER LINEAR FOOT		VOLTAGE	LENGTH		WEIGHT		PRICE	
CODE	WATTS	CODE	WATTS	CODE	WATTS	VOLTS	MM	IN.	KG	LB	W OR SW	CA
ALUX306051	500	ALUX306041	400	ALUX306031	300	120	600	23 5/8	3.1	6.7	340.00	385.00
ALUX306058	500	ALUX306048	400	ALUX306038	300	208	600	23 5/8	3.1	6.7	340.00	385.00
ALUX306052	500	ALUX306042	400	ALUX306032	300	240	600	23 5/8	3.1	6.7	340.00	385.00
ALUX306057	500	---	400	---	300	277	600	23 5/8	3.1	6.7	340.00	385.00
ALUX306053	500	---	400	---	300	347	600	23 5/8	3.1	6.7	340.00	385.00
---	500	---	400	---	300	480	600	23 5/8	3.1	6.7	---	---
---	500	---	400	---	300	600	600	23 5/8	3.1	6.7	---	---
ALUX309071	750	ALUX309061	600	ALUX309041	450	120	900	35 7/16	4.6	10.1	382.00	427.00
ALUX309078	750	ALUX309068	600	ALUX309048	450	208	900	35 7/16	4.6	10.1	382.00	427.00
ALUX309072	750	ALUX309062	600	ALUX309042	450	240	900	35 7/16	4.6	10.1	382.00	427.00
ALUX309077	750	ALUX309067	600	ALUX309047	450	277	900	35 7/16	4.6	10.1	382.00	427.00
ALUX309073	750	ALUX309063	600	ALUX309043	450	347	900	35 7/16	4.6	10.1	382.00	427.00
ALUX309075	750	---	600	---	450	480	900	35 7/16	4.6	10.1	382.00	427.00
ALUX309076	750	---	600	---	450	600	900	35 7/16	4.6	10.1	382.00	427.00
ALUX312101	1000	ALUX312081	800	ALUX312061	600	120	1200	47 1/4	6.8	13.4	424.00	469.00
ALUX312108	1000	ALUX312088	800	ALUX312068	600	208	1200	47 1/4	6.8	13.4	424.00	469.00
ALUX312102	1000	ALUX312082	800	ALUX312062	600	240	1200	47 1/4	6.8	13.4	424.00	469.00
ALUX312107	1000	ALUX312087	800	ALUX312067	600	277	1200	47 1/4	6.8	13.4	424.00	469.00
ALUX312103	1000	ALUX312083	800	ALUX312063	600	347	1200	47 1/4	6.8	13.4	424.00	469.00
ALUX312105	1000	ALUX312085	800	---	600	480	1200	47 1/4	6.8	13.4	424.00	469.00
ALUX312106	1000	ALUX312086	800	---	600	600	1200	47 1/4	6.8	13.4	424.00	469.00
ALUX315121	1250	ALUX315101	1000	ALUX315071	750	120	1500	59 1/16	7.6	16.8	467.00	512.00
ALUX315128	1250	ALUX315108	1000	ALUX315078	750	208	1500	59 1/16	7.6	16.8	467.00	512.00
ALUX315122	1250	ALUX315102	1000	ALUX315072	750	240	1500	59 1/16	7.6	16.8	467.00	512.00
ALUX315127	1250	ALUX315107	1000	ALUX315077	750	277	1500	59 1/16	7.6	16.8	467.00	512.00
ALUX315123	1250	ALUX315103	1000	ALUX315073	750	347	1500	59 1/16	7.6	16.8	467.00	512.00
ALUX315125	1250	ALUX315105	1000	ALUX315075	750	480	1500	59 1/16	7.6	16.8	467.00	512.00
ALUX315126	1250	ALUX315106	1000	ALUX315076	750	600	1500	59 1/16	7.6	16.8	467.00	512.00
ALUX318151	1500	ALUX318121	1200	ALUX318091	900	120	1800	70 7/8	9.1	20.1	509.00	554.00
ALUX318158	1500	ALUX318128	1200	ALUX318098	900	208	1800	70 7/8	9.1	20.1	509.00	554.00
ALUX318152	1500	ALUX318122	1200	ALUX318092	900	240	1800	70 7/8	9.1	20.1	509.00	554.00
ALUX318157	1500	ALUX318127	1200	ALUX318097	900	277	1800	70 7/8	9.1	20.1	509.00	554.00
ALUX318153	1500	ALUX318123	1200	ALUX318093	900	347	1800	70 7/8	9.1	20.1	509.00	554.00
ALUX318155	1500	ALUX318125	1200	ALUX318095	900	480	1800	70 7/8	9.1	20.1	509.00	554.00
ALUX318156	1500	ALUX318126	1200	ALUX318096	900	600	1800	70 7/8	9.1	20.1	509.00	554.00
---	1750	ALUX321141	1400	ALUX321101	1050	120	2100	82 11/16	10.6	23.4	---	---
ALUX321178	1750	ALUX321148	1400	ALUX321108	1050	208	2100	82 11/16	10.6	23.4	552.00	597.00
ALUX321172	1750	ALUX321142	1400	ALUX321102	1050	240	2100	82 11/16	10.6	23.4	552.00	597.00
ALUX321177	1750	ALUX321147	1400	ALUX321107	1050	277	2100	82 11/16	10.6	23.4	552.00	597.00
ALUX321173	1750	ALUX321143	1400	ALUX321103	1050	347	2100	82 11/16	10.6	23.4	552.00	597.00
ALUX321175	1750	ALUX321145	1400	ALUX321105	1050	480	2100	82 11/16	10.6	23.4	552.00	597.00
ALUX321176	1750	ALUX321146	1400	ALUX321106	1050	600	2100	82 11/16	10.6	23.4	552.00	597.00
---	2000	---	1600	ALUX324121	1200	120	2400	94 1/2	12.2	26.8	---	---
ALUX324208	2000	ALUX324168	1600	ALUX324128	1200	208	2400	94 1/2	12.2	26.8	594.00	639.00
ALUX324202	2000	ALUX324162	1600	ALUX324122	1200	240	2400	94 1/2	12.2	26.8	594.00	639.00
ALUX324207	2000	ALUX324167	1600	ALUX324127	1200	277	2400	94 1/2	12.2	26.8	594.00	639.00
ALUX324203	2000	ALUX324163	1600	ALUX324123	1200	347	2400	94 1/2	12.2	26.8	594.00	639.00
ALUX324205	2000	ALUX324165	1600	ALUX324125	1200	480	2400	94 1/2	12.2	26.8	594.00	639.00
ALUX324206	2000	ALUX324166	1600	ALUX324126	1200	600	2400	94 1/2	12.2	26.8	594.00	639.00
---	2250	---	1800	---	1350	120	2700	106 5/16	13.6	30.1	---	---
ALUX327228	2250	ALUX327188	1800	ALUX327138	1350	208	2700	106 5/16	13.6	30.1	636.00	681.00
ALUX327222	2250	ALUX327182	1800	ALUX327132	1350	240	2700	106 5/16	13.6	30.1	636.00	681.00
ALUX327227	2250	ALUX327187	1800	ALUX327137	1350	277	2700	106 5/16	13.6	30.1	636.00	681.00
ALUX327223	2250	ALUX327183	1800	ALUX327133	1350	347	2700	106 5/16	13.6	30.1	636.00	681.00
ALUX327225	2250	ALUX327185	1800	ALUX327135	1350	480	2700	106 5/16	13.6	30.1	636.00	681.00
ALUX327226	2250	ALUX327186	1800	ALUX327136	1350	600	2700	106 5/16	13.6	30.1	636.00	681.00
---	2500	---	2000	---	1500	120	2700	106 5/16	13.6	30.1	---	---
ALUX327258	2500	ALUX327208	2000	ALUX327158	1500	208	2700	106 5/16	13.6	30.1	636.00	681.00
ALUX327252	2500	ALUX327202	2000	ALUX327152	1500	240	2700	106 5/16	13.6	30.1	636.00	681.00
ALUX327257	2500	ALUX327207	2000	ALUX327157	1500	277	2700	106 5/16	13.6	30.1	636.00	681.00
ALUX327253	2500	ALUX327203	2000	ALUX327153	1500	347	2700	106 5/16	13.6	30.1	636.00	681.00
ALUX327255	2500	ALUX327205	2000	ALUX327155	1500	480	2700	106 5/16	13.6	30.1	636.00	681.00
ALUX327256	2500	ALUX327206	2000	ALUX327156	1500	600	2700	106 5/16	13.6	30.1	636.00	681.00

Add W for white, SW for silica white or CA for clear anodized (finish) (consult the optional colours chart or contact your °STELPRO representative for all other colours)  
 --- not available

## TECHNICAL DRAWINGS

