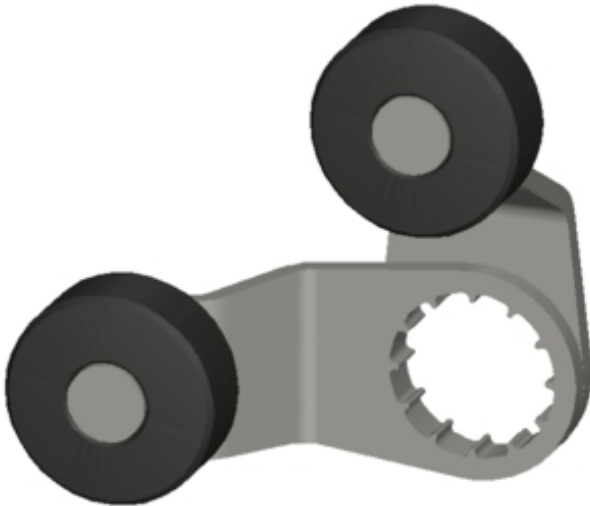


FORK LEVER FOR POSITION SWITCH 3SE51 2XLEVER MADE OF METAL WITH ONE PLASTIC ROLLER 19MM EACH FOR ACTUATOR HEAD 3SE5000-0AT10



<b>Product designation</b>	actuator for fork lever actuator
<b>Manufacturer's article number</b>	
<ul style="list-style-type: none"> <li>of the supplied operating lever</li> </ul>	<a href="#">3SE5000-0AT01</a>
<b>General technical data:</b>	
<b>Product function</b>	
<ul style="list-style-type: none"> <li>positive opening</li> </ul>	Yes
<b>Shock resistance</b>	
<ul style="list-style-type: none"> <li>acc. to IEC 60068-2-27</li> </ul>	30 g / 11 ms
<b>Vibration resistance</b>	
<ul style="list-style-type: none"> <li>acc. to IEC 60068-2-6</li> </ul>	0.35 mm/5g
<b>Mechanical service life (switching cycles)</b>	
<ul style="list-style-type: none"> <li>typical</li> </ul>	1 000 000
<b>Equipment marking</b>	
<ul style="list-style-type: none"> <li>acc. to DIN EN 61346-2</li> </ul>	T
<ul style="list-style-type: none"> <li>acc. to DIN EN 81346-2</li> </ul>	T
<b>Active principle</b>	mechanical
<b>Minimum actuating torque in activation direction</b>	0.25 N·m
<b>Enclosure:</b>	

Coating of the enclosure	Other types
--------------------------	-------------

#### Drive Head:

Design of the operating mechanism	metal lever, plastic rollers 19 mm, one track
Shape of the switch head	roller
Outer diameter of the switch head	19 mm

#### Communication/ Protocol:

Design of the interface	without
-------------------------	---------





#### Ambient conditions:

<b>Ambient temperature</b>	
<ul style="list-style-type: none"> <li>during operation</li> </ul>	-25 ... +85 °C
<ul style="list-style-type: none"> <li>during storage</li> </ul>	-40 ... +90 °C

#### Installation/ mounting/ dimensions:

Mounting position	any
Mounting type	lockable plug-in fixing

#### Certificates/approvals

General Product Approval	Declaration of Conformity	Test Certificates	other
 CSA	 UL		 EG-Konf.
		<a href="#">spezielle Prüfbescheinigung</a> <u>n</u>	<a href="#">Bestätigungen</a>

#### Further information

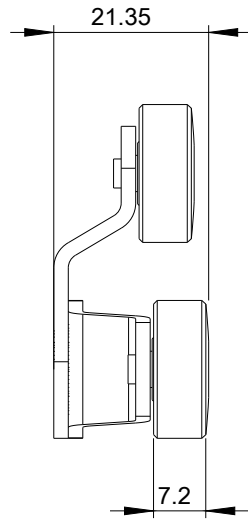
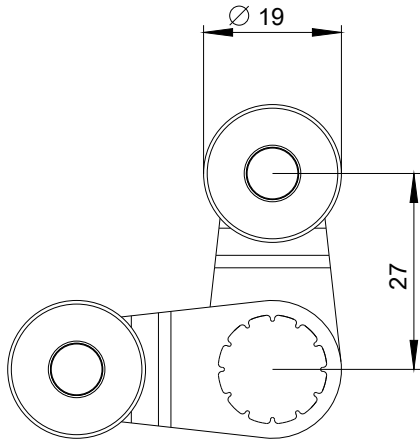
**Information- and Downloadcenter (Catalogs, Brochures,...)**  
<http://www.siemens.com/industrial-controls/catalogs>

**Industry Mall (Online ordering system)**  
<https://mall.industry.siemens.com/mall/en/en/Catalog/product?mlfb=3SE50000AT01>

**Cax online generator**  
<http://support.automation.siemens.com/WW/CAXorder/default.aspx?lang=en&mlfb=3SE50000AT01>

**Service&Support (Manuals, Certificates, Characteristics, FAQs,...)**  
<https://support.industry.siemens.com/cs/ww/en/ps/3SE50000AT01>

**Image database (product images, 2D dimension drawings, 3D models, device circuit diagrams, EPLAN macros, ...)**  
[http://www.automation.siemens.com/bilddb/cax\\_de.aspx?mlfb=3SE50000AT01&lang=en](http://www.automation.siemens.com/bilddb/cax_de.aspx?mlfb=3SE50000AT01&lang=en)



last modified:

31.03.2016