

AUXILIARY SWITCH, 2 NC CONTACTS,  
CONNECTION AUXILIARY CIRCUIT: SCREW  
TERMINAL,



General technical data:		
product brand name		SIRIUS
Product designation		auxiliary switch compact feeder
Protection class IP		IP20
Relative humidity during operation	%	10 ... 90
<b>Ambient temperature</b>		
• during transport	°C	-55 ... +80
• during storage	°C	-55 ... +80
• during operation	°C	-20 ... +60
Equipment marking acc. to DIN EN 61346-2		K
Equipment marking acc. to DIN 40719 extended according to IEC 204-2 acc. to IEC 750		K
Auxiliary circuit:		
Number of NC contacts for auxiliary contacts		2
Number of NO contacts for auxiliary contacts		0
Installation/ mounting/ dimensions:		
Width	mm	45
Height	mm	32
Depth	mm	25
Connections/ Terminals:		
Wire stripping length	mm	10
Type of electrical connection		
• for auxiliary and control current circuit		screw-type terminals

Design of screw-type connection for auxiliary contacts		M6
Tightening torque for auxiliary contacts with screw-type terminals	N·m	0.8 ... 1.2
<b>Type of connectable conductor cross-section for auxiliary contacts</b>		
<ul style="list-style-type: none"> <li>• solid</li> <li>• finely stranded <ul style="list-style-type: none"> <li>— with core end processing</li> </ul> </li> </ul>		max. 2x (1 ... 4 mm <sup>2</sup> )  2x (0.5 ... 1.5 mm <sup>2</sup> ), 2x (0.75 ... 2.5 mm <sup>2</sup> )
Type of connectable conductor cross-section for AWG conductors for auxiliary contacts		2x (20 ... 16), 2x (18 ... 14), 1x 12

#### Certificates/ approvals:

**Certificate of suitability**

IEC / EN 60947-6-2

<b>General Product Approval</b>	<b>EMC</b>	<b>Functional Safety/Safety of Machinery</b>	<b>Declaration of Conformity</b>
---------------------------------	------------	--	----------------------------------



CCC



CSA



C-TICK



VDE



EG-Konf.

<b>Shipping Approval</b>	<b>other</b>
--------------------------	--------------



BUREAU VERITAS



DNV



PRS



RINA



RMRS

[Umweltbestätigung](#)

#### Further information

**Information- and Downloadcenter (Catalogs, Brochures,...)**

<http://www.siemens.com/industrial-controls/catalogs>

**Industry Mall (Online ordering system)**

<http://www.siemens.com/industrymall>

**Cax online generator**

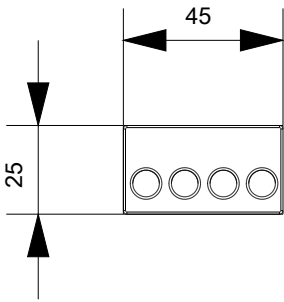
<http://support.automation.siemens.com/WW/CAXorder/default.aspx?lang=en&mlfb=3RA69121A>

**Service&Support (Manuals, Certificates, Characteristics, FAQs,...)**

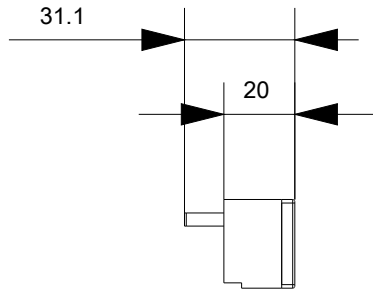
<https://support.industry.siemens.com/cs/ww/en/ps/3RA69121A>

**Image database (product images, 2D dimension drawings, 3D models, device circuit diagrams, EPLAN macros, ...)**

[http://www.automation.siemens.com/bilddb/cax\\_de.aspx?mlfb=3RA69121A&lang=en](http://www.automation.siemens.com/bilddb/cax_de.aspx?mlfb=3RA69121A&lang=en)



last modified:



27.04.2015