



SURGE SUPPRESSOR, VARISTOR, AC 127...240V,  
DC 150...250V, FOR MOTOR CONTACTORS SZ S0,

| General technical data:  |    |                  |
|--|----|------------------|
| product brand name   |    | SIRIUS           |
| Product designation  |    | surge suppressor |
| Size of contactor  |    | S0               |
| Design of the surge suppressor   |    | with varistor    |
| Ambient temperature  |    |                  |
| <ul style="list-style-type: none"> <li>during storage</li> </ul>   | °C | -40 ... +80      |
| <ul style="list-style-type: none"> <li>during operation</li> </ul>   | °C | -25 ... +60      |
| Control circuit/ Control:  |    |                  |
| Type of voltage of the control supply voltage  |    | AC/DC            |
| Control supply voltage frequency   |    |                  |
| <ul style="list-style-type: none"> <li>1 Rated value</li> </ul>  | Hz | 50               |
| <ul style="list-style-type: none"> <li>2 Rated value</li> </ul>  | Hz | 60               |
| Control supply voltage 1   |    |                  |
| <ul style="list-style-type: none"> <li>for DC</li> </ul>   |    |                  |
| <ul style="list-style-type: none"> <li> <ul style="list-style-type: none"> <li>Initial rated value</li> </ul> </li> </ul>          | V  | 150              |
| <ul style="list-style-type: none"> <li> <ul style="list-style-type: none"> <li>Final rated value</li> </ul> </li> </ul>            | V  | 250              |
| <ul style="list-style-type: none"> <li>with AC</li> </ul>  |    |                  |
| <ul style="list-style-type: none"> <li> <ul style="list-style-type: none"> <li>at 50 Hz Initial rated value</li> </ul> </li> </ul> | V  | 127              |
| <ul style="list-style-type: none"> <li> <ul style="list-style-type: none"> <li>at 50 Hz Final rated value</li> </ul> </li> </ul>   | V  | 240              |
| <ul style="list-style-type: none"> <li> <ul style="list-style-type: none"> <li>at 60 Hz Final rated value</li> </ul> </li> </ul>   | V  | 240              |
| <ul style="list-style-type: none"> <li> <ul style="list-style-type: none"> <li>at 60 Hz Initial rated value</li> </ul> </li> </ul> | V  | 127              |
| Installation/ mounting/ dimensions:  |    |                  |
| mounting position  |    | any              |

|               |    |         |
|---------------|----|---------|
| Mounting type |    | clip-on |
| Width         | mm | 30      |
| Height        | mm | 19      |
| Depth         | mm | 12      |

### Certificates/ approvals:

Certificate of suitability CE / UL / CSA / CCC

| General Product Approval | Declaration of Conformity | Test Certificates | Shipping Approval |
|--------------------------|---------------------------|-------------------|-------------------|
|--------------------------|---------------------------|-------------------|-------------------|



[Special Test Certificate](#)



### Shipping Approval



### other

[Confirmation](#)

[Environmental Confirmations](#)



VDE

### Further information

**Information- and Downloadcenter (Catalogs, Brochures,...)**

<http://www.siemens.com/industrial-controls/catalogs>

**Industry Mall (Online ordering system)**

<http://www.siemens.com/industrymall>

**Cax online generator**

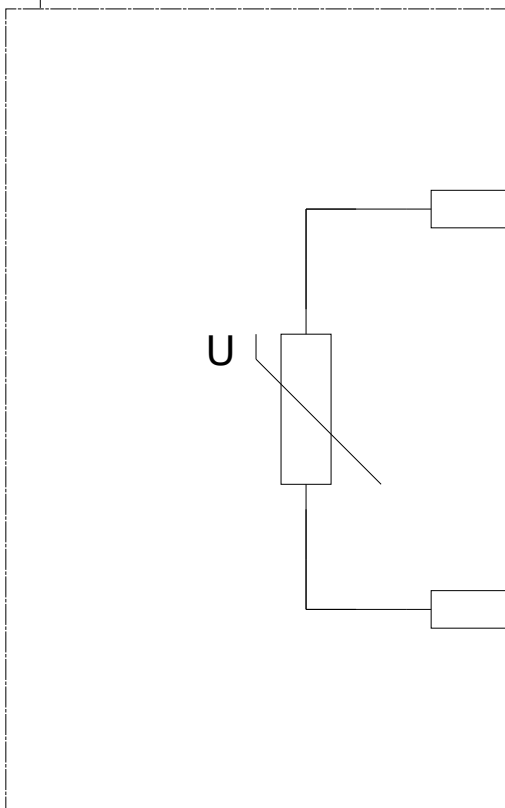
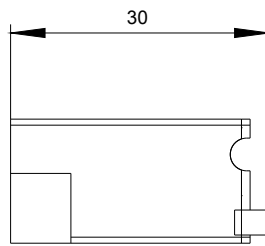
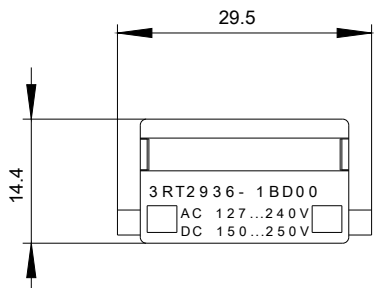
<http://support.automation.siemens.com/WW/CAXorder/default.aspx?lang=en&mlfb=3RT29261BD00>

**Service&Support (Manuals, Certificates, Characteristics, FAQs,...)**

<https://support.industry.siemens.com/cs/ww/en/ps/3RT29261BD00>

**Image database (product images, 2D dimension drawings, 3D models, device circuit diagrams, EPLAN macros, ...)**

[http://www.automation.siemens.com/bilddb/cax\\_de.aspx?mlfb=3RT29261BD00&lang=en](http://www.automation.siemens.com/bilddb/cax_de.aspx?mlfb=3RT29261BD00&lang=en)



last modified:

27.04.2015