



LATERAL AUXILIARY SWITCH 1NO+1NC, SPRING-L. CONNECTION, FOR CIRCUIT-BREAKERS 3RV2

**General technical data:**

<b>product brand name</b>		SIRIUS
<b>Product designation</b>		auxiliary switch, lateral
<b>Design of the product</b>		lateral auxiliary switches
<b>Size of the circuit-breaker</b>		S00, S0, S2
<b>Protection class IP on the front</b>		IP20
<b>Ambient temperature</b>		
• during storage	°C	-50 ... +80
• during operation	°C	-20 ... +60

**Auxiliary circuit:**

Number of NC contacts for auxiliary contacts instantaneous contact		1
Number of NO contacts for auxiliary contacts instantaneous contact		1
Number of CO contacts of the auxiliary contacts instantaneous contact		0
<b>Operating current</b>		
• of the auxiliary contacts		
— at AC-12		
— at 24 V	A	10
— at 230 V	A	10
— at 400 V	A	10
— at 690 V	A	10
— maximum	A	10
— at AC-15		

- at 24 V
- at 230 V
- at 400 V
- at DC-13
  - at 24 V
  - at 110 V
  - at 125 V
  - at 220 V
  - at 250 V
- at AC-15 at 690 V Rated value

A	6
A	4
A	3
A	2
A	0.5
A	0.5
A	0.25
A	0.25
A	1

**Installation/ mounting/ dimensions:**





<b>Mounting type</b>		plug-in fixing
<b>Width</b>	mm	9.5
<b>Height</b>	mm	90
<b>Depth</b>	mm	68

**Connections/ Terminals:**





Type of electrical connection for auxiliary and control current circuit		spring-loaded terminals
<b>Type of connectable conductor cross-section</b>		
<ul style="list-style-type: none"> <li>• for auxiliary contacts           <ul style="list-style-type: none"> <li>— solid</li> <li>— finely stranded               <ul style="list-style-type: none"> <li>— with core end processing</li> <li>— without core end processing</li> </ul> </li> </ul> </li> <li>• for AWG conductors for auxiliary contacts</li> </ul>		2x (0.5 ... 2.5 mm <sup>2</sup> )  2x (0.5 ... 1.5 mm <sup>2</sup> ) 2x (0.5 ... 1.5 mm <sup>2</sup> ) 2x (20 ... 14)

**Certificates/ approvals:**

<b>Certificate of suitability</b>		CE / UL / CSA / CCC
-----------------------------------	--	---------------------

General Product Approval			Declaration of Conformity	Test Certificates	
 CCC	 CSA	 UL	 EG-Konf.	<a href="#">Special Test Certificate</a>	<a href="#">Type Test Certificates/Test Report</a>

Test Certificates	Shipping Approval				
<a href="#">Declaration of the Compliance with the order</a>	 ABS	 BUREAU VERITAS	 DNV	 GL	 LRS

Shipping Approval			other		
 PRS	 RINA	 RMRS	<a href="#">Environmental Confirmations</a>	 VDE	<a href="#">other</a>

#### Further information

**Information- and Downloadcenter (Catalogs, Brochures,...)**

<http://www.siemens.com/industrial-controls/catalogs>

**Industry Mall (Online ordering system)**

<http://www.siemens.com/industrymall>

**Cax online generator**

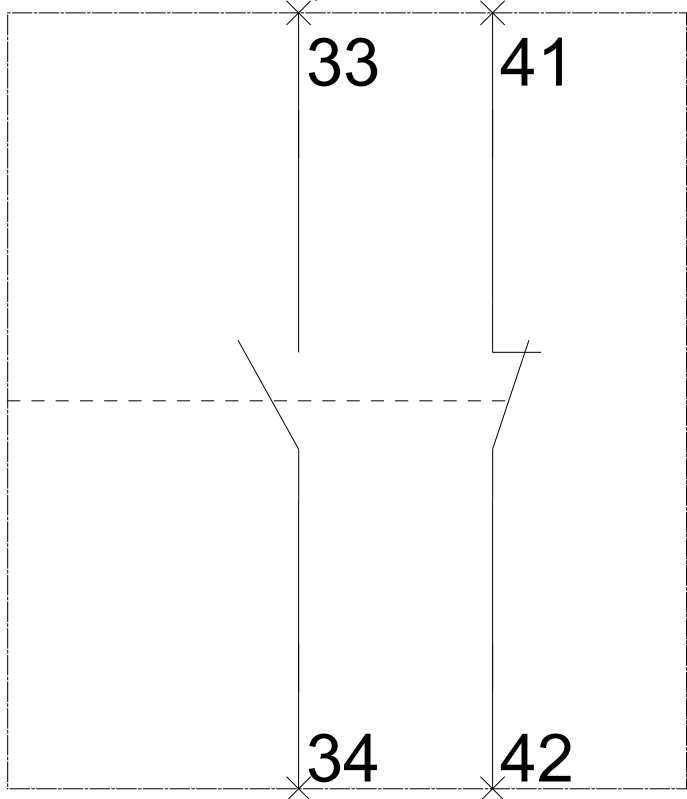
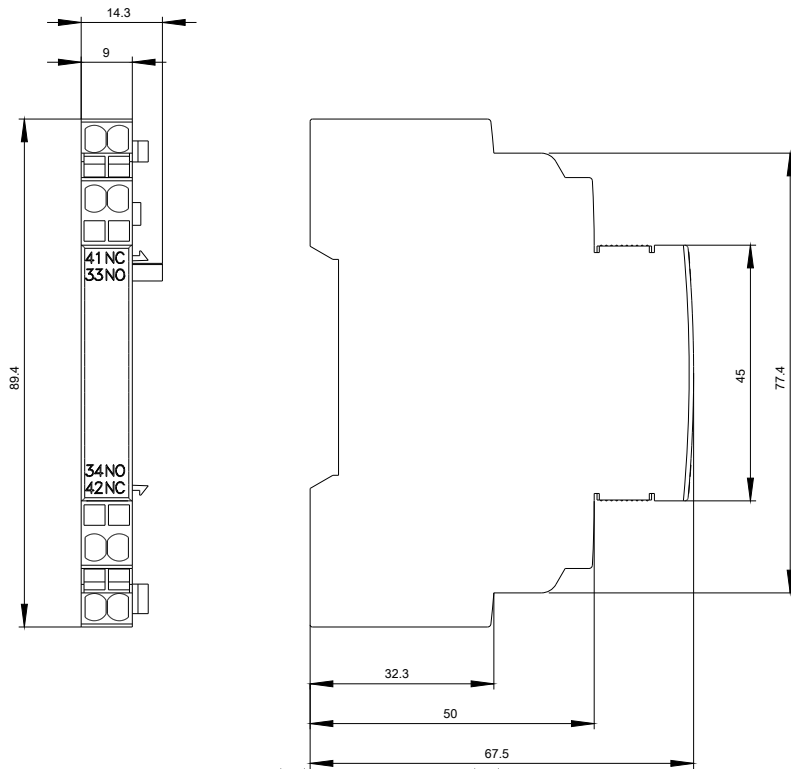
<http://support.automation.siemens.com/WW/CAXorder/default.aspx?lang=en&mfb=3RV29012A>

**Service&Support (Manuals, Certificates, Characteristics, FAQs,...)**

<https://support.industry.siemens.com/cs/ww/en/ps/3RV29012A>

**Image database (product images, 2D dimension drawings, 3D models, device circuit diagrams, EPLAN macros, ...)**

[http://www.automation.siemens.com/bilddb/cax\\_de.aspx?mfb=3RV29012A&lang=en](http://www.automation.siemens.com/bilddb/cax_de.aspx?mfb=3RV29012A&lang=en)



last modified:

27.04.2015