

TERMINAL BLOCK 6MM<sup>2</sup> FOR CURRENT OUTPUT  
AND ALSO FOR CONNECTING 3-PHASE BUSBARS

General technical data:		
product brand name		SIRIUS
Product designation		Terminal block
Design of the product		for power outlet
Protection class IP on the front		IP20
Insulation voltage with degree of pollution 3 Rated value	V	500
Ambient temperature		
• during storage	°C	-50 ... +80
• during operation	°C	-20 ... +60
Ampacity maximum	A	32
Installation/ mounting/ dimensions:		
Width	mm	40.4
Height	mm	34.5
Depth	mm	50
Certificates/ approvals:		
Certificate of suitability		CE / UL / CSA / CCC

General Product Approval	Test Certificates	Shipping Approval
--------------------------	-------------------	-------------------



[Declaration of the Compliance with the order](#)

[Type Test Certificates/Test Report](#)

[Special Test Certificate](#)



Shipping Approval
-------------------



other
-------

[Confirmation](#)

[Environmental Confirmations](#)



[other](#)

Further information
---------------------

**Information- and Downloadcenter (Catalogs, Brochures,...)**

<http://www.siemens.com/industrial-controls/catalogs>

**Industry Mall (Online ordering system)**

<http://www.siemens.com/industrymall>

**Cax online generator**

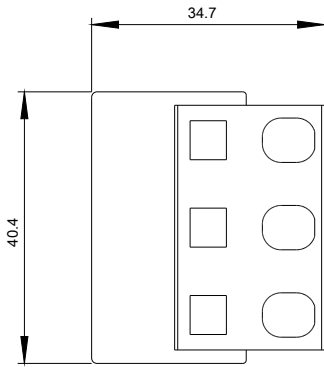
<http://support.automation.siemens.com/WW/CAXorder/default.aspx?lang=en&mlfb=3RV29175D>

**Service&Support (Manuals, Certificates, Characteristics, FAQs,...)**

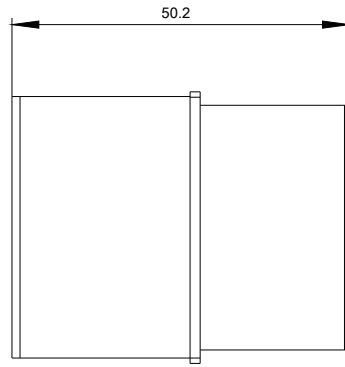
<https://support.industry.siemens.com/cs/ww/en/ps/3RV29175D>

**Image database (product images, 2D dimension drawings, 3D models, device circuit diagrams, EPLAN macros, ...)**

[http://www.automation.siemens.com/bilddb/cax\\_de.aspx?mlfb=3RV29175D&lang=en](http://www.automation.siemens.com/bilddb/cax_de.aspx?mlfb=3RV29175D&lang=en)



last modified:



20.04.2015