

## Application Information

Midwest Electric heavy duty manual transfer switches help provide reliable transfer of power from the normal utility-supplied source to a standby generator, enabling the user to readily maintain power during utility outages. Use them anywhere an extended outage would result in severe loss, damage or inconvenience.

Designed to be operational and switchable at full rated capacity, Midwest Electric transfer switches are available in single- and three-phase configurations at ratings through 600V. The double-throw mechanism helps prevent dangerous backfeeding of generator power into the utility system.



GS1202B20UL

## Features and Benefits

### Electrical ratings

- 100-400 amperes
- 240V or 600V models
- 10kAIC

### Rugged durability

- Break before make switch mechanism\*
- All-in-one construction with factory-assured terminations
- Bus bars interconnect main and standby switches\*
- Knife blade switch contacts help provide long life
- NEMA 3R weatherproof enclosure
- G90 galvanized steel construction for superior corrosion protection
- Durable polyester powder coat finish resists chipping and fading
- High quality, user-tested components designed for long life

### User protection

- Interlock allows door opening only when switch is in the OFF position\*
- Padlock provision in all three ON-OFF-ON transfer positions
- Padlock provision on door

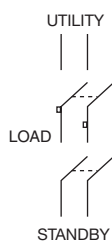
### Installation Ease

- Optional neutral kits available for both 240V and 600V models
- Broad range of concentric knockouts accommodate varying wiring needs
- All terminals accept copper or aluminum wire for installation flexibility

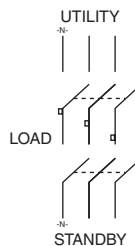


\* On most models.

# Transfer Switches



**Fig. A**  
GS1101B12UL, GS1201B20UL,  
GS1202B20UL, GS1402B01UL,  
GS1404B01UL



**Fig. B**  
GS3402B01UL, GS3404B01UL,  
GS3161B12UL, GS3262B25UL,  
GS3464B01UL

## Two Pole, 100 – 400 Amps, 240V

Fig.	Model Number	Switch Ratings			Optional Neutral Kit <sup>1</sup>	Unit Wt.
		Amps		Poles		
		Main	Standby			
A	GS1101B12UL	100	100	2	NEU102	31
	GS1201B20UL	200	100		NEU202	42
	GS1202B20UL <sup>2</sup>	200	200		NEU202	46
	GS1402B01UL	400	200		NEU407	71
	GS1404B01UL	400	400		NEU407	80

<sup>1</sup> Order Neutral Kit for 3-wire system (120/240).

<sup>2</sup> Available with meter socket.

## Three Pole, 200 – 400 Amps, 240V

Fig.	Model Number	Switch Ratings			Optional Neutral Kit <sup>1</sup>	Unit Wt.
		Amps		Poles		
		Main	Standby			
B	GS3402B01UL	400	200	3	NEU407	107
	GS3404B01UL	400	400			120

<sup>1</sup> Order Neutral Kit for 4-wire system (280Y/120).

## Three Pole, 100 – 400 Amps, 600V

Fig.	Model Number	Switch Ratings			Optional Neutral Kit <sup>1</sup>	Unit Wt.
		Amps		Poles		
		Main	Standby			
B	GS3161B12UL <sup>2</sup>	100	100	3	NEU102	31
	GS3262B25UL <sup>3</sup>	200	200		NEU202	48
	GS3464B01UL	400	400		NEU407	120

<sup>1</sup> Order Neutral Kit for 4-wire systems (208Y/120, 480Y/277, 600Y/347).

<sup>2</sup> Available in light duty construction. Only in 2 pole single phase design – order model number GS3161G.

<sup>3</sup> Available in light duty construction. Only in 2 pole single phase design – order model number GS3262G (not UL Listed).

All three pole models are suitable for use in single phase, 3-wire, switched neutral applications – no neutral required.

## Technical Data

Model Number	Wire Range (cu/al)	Conduit Hub/Opening <sup>1</sup>		Enclosure Style	Cabinet Dimensions (inches)				Knockout Figure
		Qty.	Size		Height (A)	Width (B)	Depth (C)	Depth (D)	
GS1101B12UL	12-1/0	1	1-1/4	A	26	13	6-3/4	10-5/8	1
GS3161B12UL					26	13	6-3/4	10-5/8	1
GS1201B20UL	6-250	1	2	A	32	15-3/4	6-3/4	10-5/8	2
GS1202B20UL					35	15-3/4	7	10-5/8	2
GS3262B25UL				2-1/2	A	34-3/4	15-3/4	6-3/4	10-5/8
GS1402B01UL	2-600 or (2) 1/0-250	2	Closure Caps	A	43-1/2	18-1/2	9-1/4	14-1/8	3
GS3402B01UL					42-1/2	24	9-1/4	14-1/8	4
GS1404B01UL					43-3/4	18-1/2	9-1/4	14-1/8	3
GS3404B01UL					43-1/2	24	9	14-1/8	4
GS3464B01UL					43-1/2	24	9	14-1/8	4

<sup>1</sup> Switch includes conduit hub or closure cap(s) as indicated. Alternate conduit hub sizes on page 110.

## Cabinet Dimensions

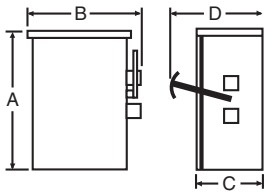


Fig. A

## Knockout Configurations

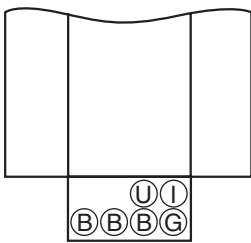


Fig. 1

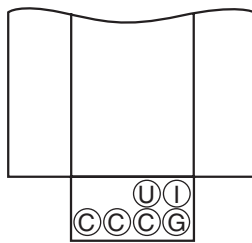


Fig. 2

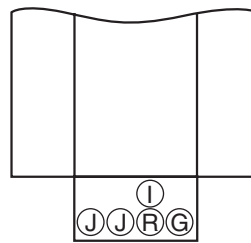


Fig. 3

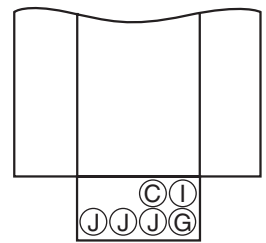


Fig. 4

### Knockout Key

- B = 1", 1-1/4", 1-1/2"
- C = 1-1/4", 1-1/2", 2"
- G = 1/2", 3/4", 1"
- I = 11/16"
- J = 2", 2-1/2", 3", 3-1/2"
- R = 3/4", 1", 1-1/4", 1-1/2", 2"
- U = 1/4"

\* Knockouts shown for size not for exact positions.

Data subject to change without notice.