

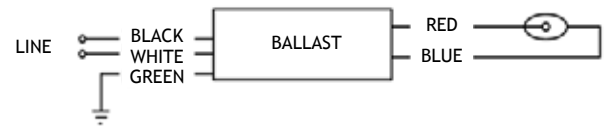
ORDERING INFORMATION

Order code: 61510
 Description: EMH0070/120-277/BLS/STD
 UPC: 69549615106

SPECIFICATIONS

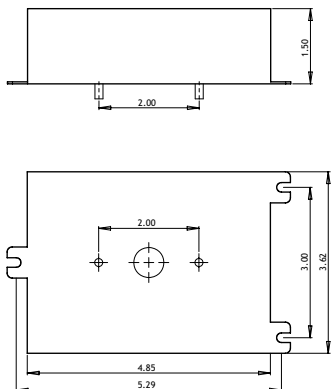
Ballast type:	Electronic HID
Lamp type:	70 W CMH
Input voltage (V):	120-277 V
Input frequency (Hz):	50/60 HZ
ANSI code:	M98 / M143 / M139
Max. Case Temp:	75 °C
Min. Case Temp:	-20 °C
Safety approval:	61510

WIRING DIAGRAM



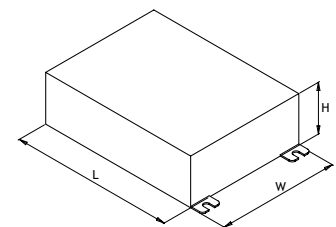
Lamp		Volts	Line Current	Input power	Regulation	Power Factor	THD %	Max. distance to lamp	Lamp current crest factor
Number	Watts	(V)	(A)	(W)				(ft)	
1	70	120	0.67	78	± 5%	> 0.95	< 15%	5	< 1.4
		277	0.29						

HOT SPOT LOCATION



BALLAST DIMENSIONS

Length (L)	4.85" (12.32 cm)
Width (W)	3.62" (9.20 cm)
Height (H):	1.50" (3.81 cm)
Mounting Length	5.29" (13.47 cm)
Mounting Width	3" (7.62 cm)



This lighting equipment complies with Canadian standard ICES-005; for use in commercial applications.

Data is based upon tests performed in a controlled environment and representative of relative performance. Actual performance can vary depending on operating conditions. Specifications are subject to change without notice.
 April 6, 2015