

# Aluminum and Steel Liquidtight Strain Relief Cord and Cable Connectors

NEC/CEC — Suitable for use in:  
 Class I, Division 2  
 Class II, Division 1 and 2  
 Class III,  
 NEMA 3R

## Application

- Provide a liquidtight and strain relief termination for flexible type neoprene, hypalon, and PVC jacketed power or control cord and cable.
- For use in wet or dry locations sealing electrical connections against dust and dirt, oil, water or other atmosphere containing moisture.

## Features

- Available in straight or 90°, aluminum or steel construction to meet the requirements of rugged service on all types of equipment and in all non-hazardous areas.
- Color coded identification label clearly states the catalog number and minimum-maximum cable diameter range for which the connector is designed.
- Neoprene sealing grommet firmly but safely grips cable jacket providing strain relief while protecting internal wiring connections against external tension on cable or cord.
- Steel or Teflon® washer reduces friction between grommet and connector cap providing even pressure distribution, eliminating leakage resulting from grommet distortion.
- Large aluminum connectors 1-1/2" thru 4" and all steel connectors are constructed with hex head cap.
- For particularly harsh applications, wire mesh strain reliefs may be used with cord and cable connectors.
- CG Series in aluminum construction is available in straight type from 1/4" thru 4", 90° type from 3/8" thru 1-1/4".
- CG Series in steel construction is available in straight type from 1/4" thru 2" and 90° type from 3/8" thru 1-1/4".
- Silicone free.

## Standard Materials

- Aluminum connectors
  - Straight body: aluminum
  - 90° body: cast aluminum
  - Cap: copperfree (4/10 of 1% or less) aluminum
  - Sealing grommet: neoprene
  - Washer: steel or Teflon®
  - Wire mesh strain relief: stainless steel
  - Cap on wire mesh: copperfree (4/10 of 1% or less) aluminum
- Steel connectors
  - Straight body: machined steel
  - 90° body: malleable iron
  - Cap: machined steel
  - Sealing grommet: neoprene
  - Washer: steel or Teflon ①
  - Wire mesh strain relief: stainless steel
  - Cap on wire mesh: steel, zinc plate

## Options

- PVC coating available on select connectors. Add suffix -PVC to catalog number.

## NEC/CEC Certifications and Compliances

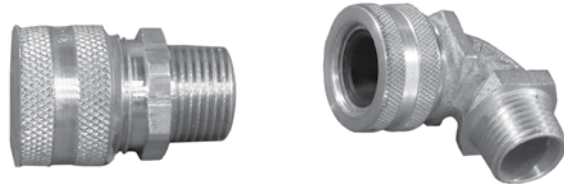
- UL Standard: 514B
- UL Listed: E14817
- CSA Standard: C22.2 No. 18.3
- CSA Certified: 065178

## Related Products

- Locknuts are available, refer to *Commercial Fittings*

① Teflon is a registered trademark of E.I. DuPont de Nemours and Co.

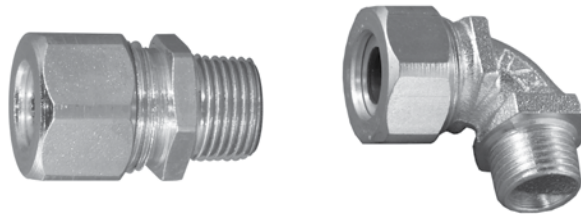
Aluminum



Straight

90°

Steel

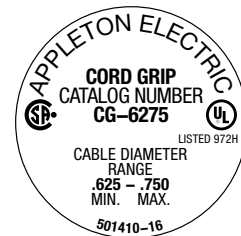


Straight

90°



Wire Mesh Strain Relief for Cord Connectors



Color coded label

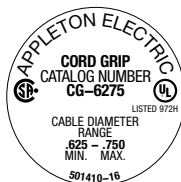
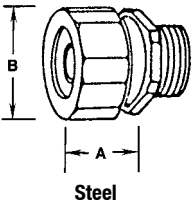
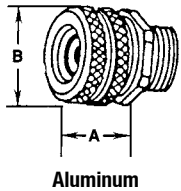
# Aluminum and Steel Liquiddtight Strain Relief Cord and Cable Connectors

NEC/CEC — Suitable for use in:  
 Class I, Division 2  
 Class II, Division 1 and 2  
 Class III,  
 NEMA 3R

Appleton

COMMERCIAL AND INDUSTRIAL FITTINGS: CORD AND TRAY CABLE CONNECTORS

	Cable Range (Inches)	Color Coded Label	Dimensions — mm (in)		Weight Per 100 — kg (lb)		Catalog Number	
			A	B	Aluminum	Steel	Aluminum	Steel
<b>1/4 Inch Hubs</b>								
	0.060—0.156	Purple/Pink	22.4 (0.88)	19.1 (0.75)	—	—	CG-0625 ②	CG-0625S ②
	0.156—0.250	Orange/Gray	22.4 (0.88)	19.1 (0.75)	1.68 (3.70)	4.08 (9.00)	CG-1525 ②	CG-1525S ②
<b>3/8 Inch Hubs</b>								
	0.125—0.187	Red	20.6 (0.81)	23.9 (0.94)	2.54 (5.60)	6.71 (14.80)	CG-1238 ⑤	CG-1238S ⑤
	0.187—0.312	Brown	20.6 (0.81)	23.9 (0.94)	2.27 (5.00)	5.99 (13.20)	CG-1838	CG-1838S
	0.312—0.437	Yellow	20.6 (0.81)	23.9 (0.94)	2.54 (5.60)	6.71 (14.80)	CG-3138	CG-3138S
<b>1/2 Inch Hubs ④</b>								
	0.125—0.187	Red	20.6 (0.81)	23.9 (0.94)	2.72 (6.00)	7.08 (15.60)	CG-1250 ⑤	CG-1250S ⑤
	0.187—0.312	Brown	20.6 (0.81)	23.9 (0.94)	2.72 (6.00)	7.08 (15.60)	CG-1850	CG-1850S
	0.312—0.437	Yellow	20.6 (0.81)	23.9 (0.94)	2.72 (6.00)	7.08 (15.60)	CG-3150	CG-3150S
	0.375—0.500	Purple	20.6 (0.81)	31.8 (1.25)	3.63 (8.00)	9.43 (20.80)	CG-3750	CG-3750S
	0.500—0.625	Pink	20.6 (0.81)	31.8 (1.25)	3.63 (8.00)	9.43 (20.80)	CG-5050	CG-5050S
	0.625—0.750	Orange	20.6 (0.81)	31.8 (1.25)	3.63 (8.00)	9.43 (20.80)	CG6250 ①	CG-6250S ①
<b>3/4 Inch Hubs ④</b>								
	0.187—0.250	Blue	22.4 (0.88)	31.8 (1.25)	4.54 (10.00)	11.79 (26.00)	CG-1275	CG-1275S
	0.250—0.375	Green	22.4 (0.88)	31.8 (1.25)	4.54 (10.00)	11.79 (26.00)	CG-2575	CG-2575S
	0.375—0.500	Purple	22.4 (0.88)	31.8 (1.25)	4.54 (10.00)	11.79 (26.00)	CG-3775	CG-3775S
	0.500—0.625	Pink	22.4 (0.88)	31.8 (1.25)	4.54 (10.00)	11.79 (26.00)	CG-5075	CG-5075S
	0.625—0.750	Orange	22.4 (0.88)	35.1 (1.38)	4.54 (10.00)	11.79 (26.00)	CG-6275	CG-6275S
	0.750—0.875	Gray	22.4 (0.88)	35.1 (1.38)	4.54 (10.00)	11.79 (26.00)	CG-7575 ①	CG-7575S ①
<b>1 Inch Hubs ④</b>								
	0.375—0.500	Purple	23.9 (0.94)	35.1 (1.38)	6.80 (15.00)	17.69 (39.00)	CG-37100	CG-37100S
	0.500—0.625	Pink	23.9 (0.94)	35.1 (1.38)	6.80 (15.00)	17.69 (39.00)	CG-50100	CG-50100S
	0.625—0.750	Orange	23.9 (0.94)	35.1 (1.38)	6.80 (15.00)	17.69 (39.00)	CG-62100	CG-62100S
	0.750—0.875	Gray	23.9 (0.94)	44.5 (1.75)	6.80 (15.00)	17.69 (39.00)	CG-75100	CG-75100S
	0.875—1.000	Red	23.9 (0.94)	44.5 (1.75)	6.80 (15.00)	17.69 (39.00)	CG-87100	CG-87100S
	1.000—1.125	Blue	23.9 (0.94)	44.5 (1.75)	6.80 (15.00)	17.69 (39.00)	CG-100100 ①	CG-100100S ①
<b>1-1/4 Inch Hubs ④</b>								
	0.750—0.875	Gray	26.9 (1.06)	44.5 (1.75)	10.43 (23.00)	27.22 (60.00)	CG-75125	CG-75125S
	0.875—1.000	Red	26.9 (1.06)	44.5 (1.75)	11.34 (25.00)	29.48 (65.00)	CG-87125	CG-87125S
	1.000—1.125	Blue	26.9 (1.06)	54.1 (2.13)	11.34 (25.00)	29.48 (65.00)	CG-100125	CG-100125S
	1.125—1.250	Brown	26.9 (1.06)	54.1 (2.13)	11.34 (25.00)	29.48 (65.00)	CG-112125	CG-112125S
	1.250—1.375	Green	26.9 (1.06)	54.1 (2.13)	9.98 (22.00)	25.85 (57.00)	CG-125125 ①	CG-125125S ①
	1.375—1.500	Yellow	26.9 (1.06)	54.1 (2.13)	9.07 (20.00)	23.59 (52.00)	CG-137125 ①	CG-137125S ①
<b>1-1/2 Inch Hubs</b>								
	1.156—1.312	—	49.3 (1.94)	55.6 (2.19)	14.11 (31.10)	41.73 (92.00)	CG-115150	CG-115150S
	1.281—1.531	—	66.8 (2.63)	65.0 (2.56)	27.76 (61.20)	72.57 (160.00)	CG-128150 ③	CG-128150S
<b>2 Inch Hubs</b>								
	1.531—1.780	—	62.0 (2.44)	76.2 (3.00)	43.09 (95.00)	104.33 (230.00)	CG-153200 ②	CG-153200S
	1.650—2.000	—	62.0 (2.44)	81.0 (3.19)	45.36 (100.00)	—	CG-165200 ③	—
<b>2-1/2 Inch Hubs</b>								
	2.000—2.343	—	77.7 (3.06)	87.4 (3.44)	64.09 (141.30)	—	CG-200250 ③	—
	2.250—2.500	—	77.7 (3.06)	93.7 (3.69)	64.36 (141.90)	—	CG-225250 ③	—
<b>3 Inch Hubs</b>								
	2.500—2.843	—	77.7 (3.06)	103.1 (4.06)	89.04 (196.30)	—	CG-250300 ③	—
	2.687—3.062	—	82.6 (3.25)	114.3 (4.50)	116.26 (256.30)	—	CG-268300 ③	—
<b>3-1/2 Inch Hubs ②</b>								
	3.000—3.390	—	82.6 (3.25)	120.7 (4.75)	96.39 (212.50)	—	CG-300350	—
	3.281—3.515	—	82.6 (3.25)	127.0 (5.00)	102.06 (225.00)	—	CG-328350	—
<b>4 Inch Hubs ②</b>								
	3.500—3.843	—	82.6 (3.25)	133.4 (5.25)	124.74 (275.00)	—	CG-350400	—
	3.750—4.000	—	82.6 (3.25)	139.7 (5.50)	133.27 (293.80)	—	CG-375400	—



Color coded label

- ① Remove sufficient outer covering of cord or cable to pass conductors through connector body.
- ② Not UL Listed.
- ③ Not CSA Certified.
- ④ PVC coating available on select connectors. Add suffix **-PVC** to catalog number.
- ⑤ Not UL Listed below cable O.D. 0.187"

# Aluminum and Steel Liquidtight Strain Relief Cord and Cable Connectors

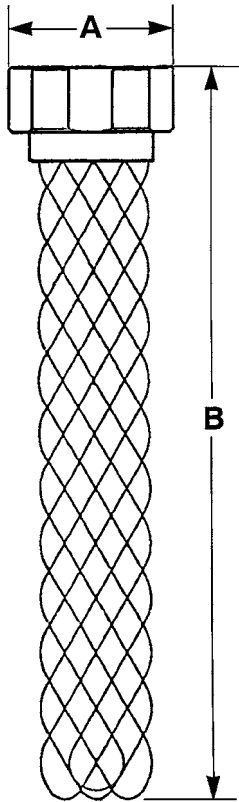
Aluminum Wire Mesh Strain Relief

NEC/CEC — Suitable for use in:  
 Class I, Division 2  
 Class II, Division 1 and 2  
 Class III,  
 NEMA 3R

Not to be used with stainless steel and nickel plated aluminum CG connectors

Appleton®

COMMERCIAL AND INDUSTRIAL FITTINGS: CORD AND TRAY CABLE CONNECTORS



Steel Cord Connectors		Dimensions— mm (in)		Weight Per 100 kg (lb)	Catalog Number
CG—Straight	CG—90°	A	B		
<b>For Connectors with 3/8 Inch Hubs</b>					
CG-1238S	CG90-1238S	23.90 (0.94)	92.20 (3.63)	2.40 (5.40)	<b>CG-SR1S</b>
CG-1838S	CG90-1838S	23.90 (0.94)	111.30 (4.38)	2.40 (5.40)	<b>CG-SR2S</b>
CG-3138S	CG90-3138S	23.90 (0.94)	139.70 (5.50)	2.40 (5.40)	<b>CG-SR3S</b>
<b>For Connectors with 1/2 Inch Hubs</b>					
CG-1250S	—	23.90 (0.94)	92.20 (3.63)	5.30 (11.70)	<b>CG-SR1S</b>
—	CG90-1250S	31.80 (1.25)	111.30 (4.38)	5.30 (11.70)	<b>CG-SR4S</b>
CG-1850S	—	23.90 (0.94)	111.30 (4.38)	5.30 (11.70)	<b>CG-SR2S</b>
—	CG90-2550S	31.80 (1.25)	139.70 (5.50)	5.30 (11.70)	<b>CG-SR5S</b>
CG-3150S	—	23.90 (0.94)	139.70 (5.50)	5.30 (11.70)	<b>CG-SR3S</b>
CG-3750S	CG90-3750S	31.80 (1.25)	155.70 (6.13)	5.30 (11.70)	<b>CG-SR6S</b>
CG-5050S	CG90-5050S	31.80 (1.25)	174.80 (6.88)	5.30 (11.70)	<b>CG-SR7S</b>
CG-6250S	CG90-6250S	31.80 (1.25)	238.30 (9.38)	5.30 (11.70)	<b>CG-SR8S</b>
<b>For Connectors with 3/4 Inch Hubs</b>					
CG-1275S	—	31.80 (1.25)	111.30 (4.38)	7.30 (16.10)	<b>CG-SR4S</b>
CG-2575S	—	31.80 (1.25)	139.70 (5.50)	7.30 (16.10)	<b>CG-SR5S</b>
—	CG90-2575S	35.10 (1.38)	104.90 (4.13)	7.30 (16.10)	<b>CG-SR9S</b>
CG-3775S	—	31.80 (1.25)	155.70 (6.13)	7.30 (16.10)	<b>CG-SR6S</b>
—	CG90-3775S	35.10 (1.38)	139.70 (5.50)	7.30 (16.10)	<b>CG-SR10S</b>
CG-5075S	—	31.80 (1.25)	174.80 (6.88)	7.30 (16.10)	<b>CG-SR7S</b>
—	CG90-5075S	35.10 (1.38)	162.10 (6.38)	7.30 (16.10)	<b>CG-SR11S</b>
CG-6275S	CG90-6275S	35.10 (1.38)	212.90 (8.38)	7.30 (16.10)	<b>CG-SR12S</b>
CG-7575S	CG90-7575S	35.10 (1.38)	231.90 (9.13)	7.30 (16.10)	<b>CG-SR13S</b>
<b>For Connectors with 1 Inch Hubs</b>					
CG-37100S	—	35.10 (1.38)	139.70 (5.50)	8.50 (18.70)	<b>CG-SR10S</b>
CG-50100S	—	35.10 (1.38)	162.10 (6.38)	8.50 (18.70)	<b>CG-SR11S</b>
CG-62100S	—	35.10 (1.38)	212.90 (8.38)	8.50 (18.70)	<b>CG-SR12S</b>
—	CG90-62100S	44.50 (1.75)	230.10 (9.06)	8.50 (18.70)	<b>CG-SR14S</b>
CG-75100S	CG90-75100S	44.50 (1.75)	230.10 (9.06)	8.50 (18.70)	<b>CG-SR15S</b>
CG-87100S	CG90-87100S	44.50 (1.75)	201.70 (7.94)	8.50 (18.70)	<b>CG-SR16S</b>
CG-100100S	CG90-100100S	44.50 (1.75)	201.70 (7.94)	8.50 (18.70)	<b>CG-SR17S</b>
<b>For Connectors with 1-1/4 Inch Hubs</b>					
CG-75125S	—	44.50 (1.75)	230.10 (9.06)	9.70 (21.40)	<b>CG-SR15S</b>
—	CG90-75125S	54.10 (2.13)	227.10 (8.94)	9.70 (21.40)	<b>CG-SR18S</b>
CG-87125S	—	44.50 (1.75)	201.70 (7.94)	9.70 (21.40)	<b>CG-SR16S</b>
—	CG90-87125S	54.10 (2.13)	201.70 (7.94)	9.70 (21.40)	<b>CG-SR19S</b>
CG-100125S	CG90-100125S	54.10 (2.13)	220.70 (8.69)	9.70 (21.40)	<b>CG-SR20S</b>
CG-112125S	CG90-112125S	54.10 (2.13)	236.50 (9.31)	9.70 (21.40)	<b>CG-SR21S</b>
CG-125125S	CG90-125125S	54.10 (2.13)	293.60 (11.56)	9.70 (21.40)	<b>CG-SR22S</b>
CG-137125S	CG90-137125S	54.10 (2.13)	274.60 (10.81)	9.70 (21.40)	<b>CG-SR23S</b>