



# Dual Rated Solderless Lugs



## TYPE TA-I

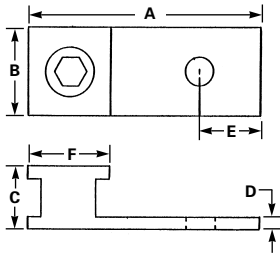
### Features

- Manufactured from high strength 6061-T6 aluminum alloy
- Electro-tin plated
- CSA Certified and UL Listed
- I-Beam construction

### Benefits

- Suitable for use with either copper or aluminum conductors
- Provides low contact resistance
- Ensures reliability for copper or aluminum conductors
- Reduces material content while maintaining the same performance standards as full sized connectors

Rated for 600 Volts



Catalog Number	Wire Range AL or CU	Mounting Hole Diameter	Dimensions						Hex Size	Temperature Rating
			A	B	C	D	E	F		
TA-6I	6-14	.206	.75	.437	.44	.062	.062	.325	SLOT	90° C
TA-2I	2-14	.265	.94	.500	.60	.094	.25	.44	SLOT	90° C
TA-1/0I	1/0-14	.265	1.125	.531	.66	.156	.25	.60	SLOT	90° C
TA-2/0I	2/0-6	.265	1.225	.600	.70	.156	.25	.60	3/16	90° C
TA-250I	250 MCM-6	.406	1.875	.875	1.0	.250	.47	.875	5/16	90° C
TA-300I	300 MCM-6	.406	1.125	.875	1.13	.293	.500	1.00	5/16	90° C
TA-350I	350 MCM-6	.406	2.125	1.00	1.13	.293	.500	1.00	5/16	90° C
TA-500I	500 MCM-4	.406	2.375	1.20	1.38	.312	.625	1.125	3/8	90° C
TA-600I	600 MCM-2	.562	2.613	1.35	1.50	.423	.69	1.20	1/2	90° C
TA-800I	800 MCM-300 MCM	.660	3.04	1.58	1.75	.468	.82	1.40	1/2	90° C
TA-1000I	1000 MCM-350 MCM	.660	3.25	1.69	1.88	.500	.88	1.50	9/16	90° C