

AL Ball and Cushion Flexible Fixture Hangers

UNILETS® for Use with Threaded Rigid Metal Conduit and IMC. Ball Joint Permits 20° Swing.

NEC:

Listed for Ordinary (Unclassified) Locations

Applications

- Designed for suspension of HID, fluorescent and incandescent lighting fixtures.
- Functions as combination conduit outlet box and hanger.

Features

- Protects fixture against wind and vibration damage.
- Cushion type for added protection where lighting fixtures are subjected to vibration.
- Dual function—conduit outlet box and fixture hanger.
- Choice of ball or cushion type.
- Swivel joint construction—allows 20° swing from vertical.
- Cushion style, with conical spring, supports up to 54 kg (120 lbs).
- Cushion type has setscrew for locking fixture stem.
- Fixture and hanger stem can be wired at work bench.
- Connection block available for convenient wiring of fixture leads.

Standard Materials

- Malleable iron with steel cover

Standard Finishes

- Malleable iron parts: triple-coat—(1) zinc electroplate, (2) chromate, and (3) epoxy powder coat
- Steel parts: zinc electroplate

NEC Certifications and Compliances

- UL Listed: E109438



ALA — Ball Hanger



ALC — Ball Hanger

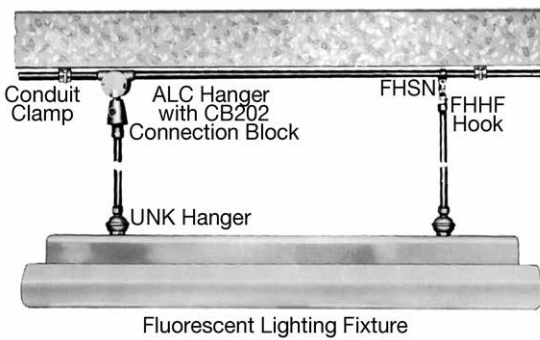


ALL — Cushion Hanger



ALT — Cushion Hanger

Illustrated Features



POLES/HANGERS: NEC/CEC ORDINARY LOCATION FLEXIBLE FIXTURE HANGERS










AL Ball and Cushion Flexible Fixture Hangers

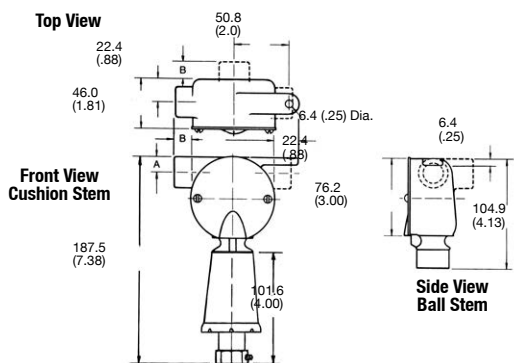
UNILETS® for Use with Threaded Rigid Metal Conduit and IMC.

NEC:
Listed for Ordinary (Unclassified) Locations

POLES/HANGERS: NEC/CEC ORDINARY LOCATION FLEXIBLE FIXTURE HANGERS

	Size (Inches)	Support Weight kg (lbs)	Catalog Number
AL – Hanger Bodies			
	1/2	(Refer to Cushion and Ball Fixture Stems Below)	ALA50
	3/4		ALA75
	1/2	(Refer to Cushion and Ball Fixture Stems Below)	ALC50
	3/4		ALC75
	1		ALC100
	1/2	(Refer to Cushion and Ball Fixture Stems Below)	ALL50
	3/4		ALL75
	1/2	(Refer to Cushion and Ball Fixture Stems Below)	ALT50
	3/4		ALT75
	1		ALT100
AL – Ball Fixture Stem			
	1/2	112.5 (250)	BJ50
	3/4		BJ75
AL – Cushion Fixture Stems			
Fixture stem tapped for 3/4"; 3/4" to 1/2" reducer furnished for 1/2" stems. With setscrew for locking fixture stem.			
	3/4 or 1/2	1.4-5.4 (3-12)	CJC75-12
	3/4 or 1/2	5.4-21.6 (12-48)	CJC75-48
	3/4 or 1/2	21.6-54.0 (48-120)	CJC75-120
AL – Porcelain Connection Block			
	2 Wire, 20 Amp, 277 Volt Maximum Wire Size Two No. 10 AWG Large Terminal Two No. 14 AWG Small Terminal		CB202

AL Fixture Hanger Dimensions – Millimeters (Inches)



Conduit Trade Size	Dimensions in Millimeters (Inches)	
	A	B
1/2"	4.2 (0.56)	17.5 (0.69)
3/4"	17.5 (0.69)	17.5 (0.69)
1"	22.4 (0.88)	20.6 (0.81)