

# Form 35™ Malleable Iron Conduit Outlet Bodies, Covers and Gaskets

For use with Rigid Steel, Rigid Aluminum and IMC Conduit.

NEC/CEC — Suitable for use in the following  
Hazardous Locations:  
Class I, Division 2 per NEC 501.10(B)(4)

## Applications

- Serve as pulling fittings.
- Make bends in conduit system.
- Provide openings for splicing.
- Connect and change direction of conduit runs.
- Allow connections for branch runs.
- Permit access to conductors for maintenance.

## Features

- Smooth, rounded integral bushings in hubs protect conductor insulation.
- Accurately tapped, tapered threads for tight, rigid joints and excellent ground continuity.
- Form 35™ malleable iron Unilets™: high tensile strength and ductility. High corrosion-resistance, high impact and shock resistance.
- Exclusive built-in easy-pulling rollers in type C (1-1/4" thru 4") and type LB (1-1/4" thru 4"): eliminate damage when cable is pulled through hubs.
- Sizes with flat-back design ideal where fitting is mounted flat against surface.
- 1/2" to 3" blank covers are domed for extra wiring space.
- Raintight when an Appleton™ cover and gasket are installed.

## Standard Materials

- Bodies: malleable iron
- Blank covers: malleable iron, steel or aluminum
- Cover screws: stainless steel
- Gaskets: neoprene or composition fiber

## Standard Finishes

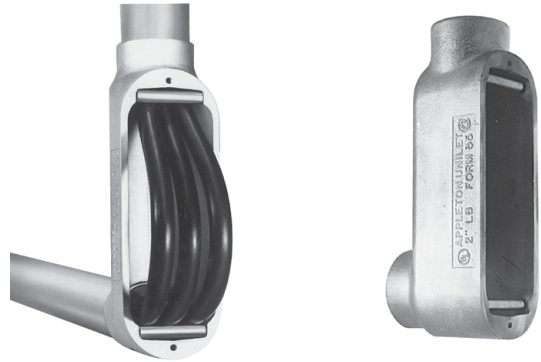
- Malleable iron bodies and covers: triple-coat — (1) zinc electroplate, (2) chromate, and (3) epoxy powder coat
- Steel covers: zinc electroplate

## NEC/CEC Certifications and Compliances

- UL Standards: 514A, 514B
- UL Listed: E2527
- CSA Standard: C22.2 No. 18.3
- CSA Certified: 065183
- NEMA Standard: FB-1

## Related Products

- For explosionproof conduit outlet bodies and boxes, see *Enclosures and Junction Boxes in Protection and Control of Electrical Apparatus and Circuits Catalog*.



2" Type LB with rollers shown

Appleton



COMMERCIAL AND INDUSTRIAL FITTINGS: CONDUIT BODIES



# Form 35™ Malleable Iron Conduit Outlet Bodies, Covers and Gaskets

For use with Rigid Steel, Rigid Aluminum and IMC Conduit.

NEC/CEC – Suitable for use in the following  
Hazardous Locations:  
Class I, Division 2 per NEC 501.10(B)(4)

## Threaded Type Conduit Bodies

Hub Size (Inches)	Max. Wire Fill	LL	Max. Wire Fill	LR
				
1/2	①	LL-50M	①	LR-50M
3/4	(3) # 6	LL-75M	(3) # 6	LR-75M
1	(3) # 4	LL-100M	(3) # 4	LR-100M
1-1/4	(3) # 2	LL-125M	(3) # 2	LR-125M
1-1/2	(3) # 1/0	LL-150M	(3) # 1/0	LR-150M
2	(3) # 4/0	LL-200M	(3) # 4/0	LR-200M
2-1/2	(3) 300	LL-250M	(3) 300	LR-250M
3	(3) 350	LL-300M	(3) 350	LR-300M
3-1/2	(3) 350	LL-350M	(3) 350	LR-350M
4	(3) 350	LL-400M	(3) 350	LR-400M
5	—	—	—	—
6	—	—	—	—

Hub Size (Inches)	Max. Wire Fill	TB	Max. Wire Fill	X
				
1/2	①	TB-50M	①	X-50M
3/4	(3) # 6	TB-75M	(3) # 6	X-75M
1	(3) # 6	TB-100M	(3) # 4	X-100M
1-1/4	(3) # 6	TB-125M	(3) # 4	X-125M
1-1/2	(3) # 4	TB-150M	(3) # 1/0	X-150M
2	(3) # 1/0	TB-200M	(3) # 2/0	X-200M
2-1/2	—	—	—	—
3	—	—	—	—
3-1/2	—	—	—	—
4	—	—	—	—

### Back Style for Form 35™ Unilet Conduit Body Sizes (Inches)

Unilet Body	Flat Back	Round Back	Unilet Body	Flat Back	Round Back
C, LB	1/2 – 2	2-1/2 and up	TB	1/2 – 1-1/2	1/2, 3/4, 1, 2
E	1/2 – 1-1/2	1-1/4 and up	X	1/2 – 2	1-1/4 and up
LL, LR, T	1/2 – 2	2-1/2 and up	TA	All sizes	—

① All 1/2" Max Wire Fill Calculations per the NEC - Annex C - Table C8.