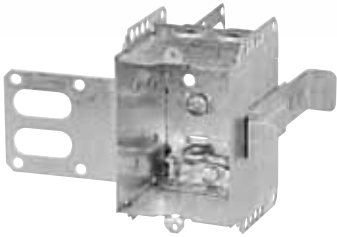


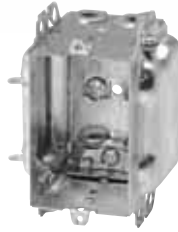
## Device Boxes

### Armoured and Nonmetallic Sheathed Cable Clamps



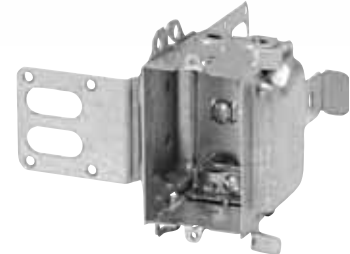
**CI1504-LSSAX**

"Wraparound" bracket for 2-1/2 in. and 3-5/8 in. steel studs. With integral support bracket.



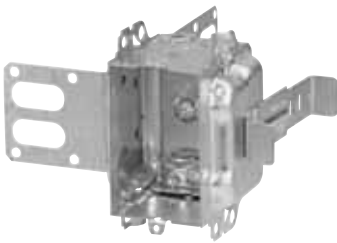
**CI3104-LHA**

Positioning tabs. Provision for external nailing.



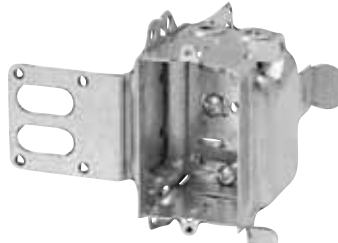
**BC3104-LSSAX**

"Wraparound" bracket for 2-1/2 in. and 3-5/8 in. steel studs. With integral support bracket.



**CI3104-LSSA1X-1**

1 in. recessed brackets for 2-1/2 in. and 3-5/8 in. steel studs. Brackets positioned for 2 layers of 1/2 in. drywall.



**BC3104-LSSX**

"Wraparound" bracket for 2-1/2 in. and 3-5/8 in. steel studs. With integral support bracket.



**CI2004-LHA**

Provision for external nailing. Holding prongs and prepositioned depth tabs.



**CI1004-LHA**

Positioning tabs. Provision for external nailing. Two embossed mounting slots for internal screw installation.



Cat. No.	Volume (Cu. in.)	Features		Pryouts ends
		Ears	Bracket	
<b>2-1/2 in. Deep — Non-Gangable — 3 in. x 2-1/4 in.</b>				
<b>CI1504-LSSAX</b>	15.0	-	"SSX"	4
<b>2-1/2 in. Deep — Gangable — 3 in. x 2 in.</b>				
<b>CI3104-LHA</b>	16.0	-	P. Tabs	4
<b>BC3104-LSSAX</b>	16.0	-	"SSX"	4
<b>CI3104-LSSA1X-1</b>	16.0	-	"SSX"	4
<b>BC3104-LSSX</b>	16.0	-	P. Tabs	4
<b>2-3/4 in. Deep — Non-Gangable — 3-3/4 in. x 2-3/16 in.</b>				
<b>CI2004-LHA</b>	18.5	-	P. Tabs	4
<b>3 in. Deep — Gangable — 3 in. x 2 in.</b>				
<b>CI1004-LHA</b>	15.0	-	P. Tabs	4