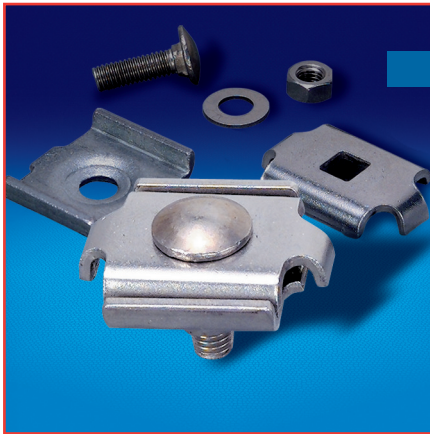


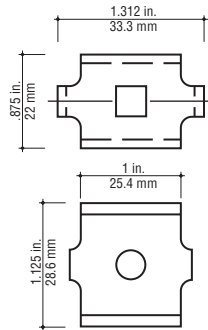
T&B Express Tray™

Hardware

Universal Splice



Dimensions



The most widely used connection method for non-radiused bends or joints, the universal splice is compatible with all profiles and is offered in hot-dipped galvanized steel and stainless steel.

i Refer to pages 26, 27, 28 and 29 for application examples.

Material	Catalog number	Weight	
		lb/ea.	kg/ea.
Hot-dipped Galvanized Steel	ETH-SP-HD	0.07	0.03
Stainless Steel (Type 304)	ETH-SP-SS	0.07	0.03

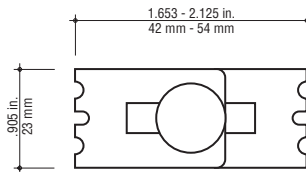


Tool required: 10mm nut driver

Adjustable Splice



Dimensions



Used to construct angles or bends with a radius, the adjustable splice is designed for ease of installation when field-producing bends. Installed on the inside radius, this splice adjusts up to 1/2" and is ideally suited for any application where adjustment may be necessary. The adjustable splice is offered in hot-dipped galvanized steel and stainless steel and is compatible with all tray profiles.

i Refer to pages 26 and 29 for application examples.

Material	Catalog number	Weight	
		lb/ea.	kg/ea.
Hot-dipped Galvanized Steel	ETH-ADJSP-HD	0.07	0.03
Stainless Steel (Type 304)	ETH-ADJSP-SS	0.07	0.03



Tool required: 10mm nut driver

Thomas & Betts

Wire Mesh Tray Finish Suffix

Type of Wire Tray	Description	Suffix
ExpressTray	Thomas & Betts Suffix for Finishes Steel Electroplated Zinc Galvanized Steel Pre-Galvanized Steel Hot-Dip Galvanized After Fabrication Stainless Steel AISI Type 304 Black Powder Coat White Powder Coat	SE PG SH / HD Accessories SS BK WH
Wire Basket	B-Line Suffix for Finishes Standard Finish Yellow Zinc Dichromate (Pre-Galvanised Finish) Hot-Dip Galvanized After Fabrication Telco Gray Flat Black Computer White Stainless Steel AISI Type 304	HDG TG FB CW SS4
Flextray	GS Metal Suffix for Finishes Standard Finish Electrogalvanized Black Available in : (Contact Factory) Stainless Steel Hot-Dip Galvanized Custom Colors	BLE
EZ Tray	Cablofil Suffix for Finishes Electro Zinc Hot-Dipped Galvanized Stainless Steel Type 316 Stainless Steel Type 304 Black Powder Coat Red Powder Coat Yellow Powder Coat Gray Example: CF54/50 'xx' where 'xx' is the finish	EZ GC IN IN304 BL RD YL GY
CAT-TRAY	Cope Suffix for Finishes Electro-Plated Zinc Galvanized (Standard Finish) Hot-Dip Galvanized Stainless Steel Type 304 Stainless Steel Type 316 Yellow Zinc Dichromate Example: CAT2-04SL-120-'xx' where 'xx' is the finish	EG HG SS S1 ZD
OBO	OBO Bettermann Suffix Finishes Steel Electroplated Zinc Galvanized Steel Pre-Galvanized Steel Hot-Dip Galvanized After Fabrication Stainless Steel Type 30Y Black Powder Coat White Powder Coat	EG FS FT VA BK WH