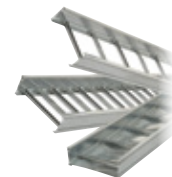


Steel Tray

7" Straight Sections, Series 3-7 — Ladder, Ventilated and Solid Trough



SH 3 7 24 L09 288

| | | | | | |
|---|-------------------------------|-----------------------------------|--|--|---|
| Material SP = Pre-Galvanized SH = Hot-Dip Galvanized after Fabrication SS = Stainless Steel 316 | Series 3 = Series 3 | Side Rail Height 7 = 7" | Width 06 = 6" 09 = 9" 12 = 12" 18 = 18" 24 = 24" 30 = 30" 36 = 36" | Bottom Type L06 = 6" Rung Spacing L09 = 9" Rung Spacing L12 = 12" Rung Spacing V = Ventilated S = Solid Trough | Length 3 = 3m 6 = 6m 144 = 12 ft. 288 = 24 ft. |
|---|-------------------------------|-----------------------------------|--|--|---|

Support Span

| SERIES | FEET | | | | | | | |
|-------------------------|-------|-------|------|------|------|-------|-------|-------|
| | 6 | 8 | 10 | 12 | 14 | 16 | 18 | 20 |
| SP3-7 Load (lb./ft.) | 1333 | 750 | 480 | 333 | 245 | 188 | 148 | 120 |
| SH3-7 Deflection (in.) | .133 | .225 | .480 | .667 | .735 | 1.125 | 1.333 | 1.680 |
| SS3-7 Deflection Factor | .0001 | .0003 | .001 | .002 | .003 | .006 | .009 | .014 |

Specifications

- NEMA Rating — All: 20C
- UL Cross Sectional Area — All: 1.50 in.²
- Side Rail Design Factors, 1 Pair — All: Ix: 10.411 in.⁴; Sx: 2.820 in.³; Area: 1.54 in.²

Fitting Number Selection

SHF 6 24 L VO 90 24

| | | | | | | |
|--|--|--|--|--|--|--|
| Material SPF = Pre-Galvanized Fittings SHF = Hot-Dip Galvanized Fittings SSF = Stainless Steel 316 | Side Rail Depth 3 = 3 3/4" 4 = 4" 5 = 5" 6 = 6" 7 = 7" | Width 06 = 6" 09 = 9" 12 = 12" 18 = 18" 24 = 24" 30 = 30" 36 = 36" | Bottom Type L = Ladder* V = Ventilated** S = Solid Trough*** | Fitting Type HB = Horizontal Bend HT = Horizontal Tee HX = Horizontal Cross VI = Vertical Inside Bend VO = Vertical Outside Bend VTD = Vertical Tee Down VTU = Vertical Tee Up HYR = Horizontal Wye Right HYL = Horizontal Wye Left RT = Horizontal Reducing Tee ET = Horizontal Expanding Tee EX = Horiz. Expand Cross HLR = Horizontal Left Reducer HSR = Horizontal Straight Reducer HRR = Horizontal Right Reducer CS = Cable Support Fitting | Angle**** 30 = 30° 45 = 45° 60 = 60° 90 = 90° | Nominal Radius† 12 = 12" 24 = 24" 36 = 36" 48 = 48" |
|--|--|--|--|--|--|--|

* Manufactured with 9" rung spacing measured at the center line of fitting.

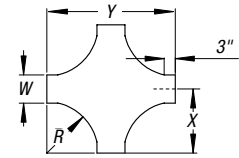
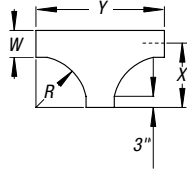
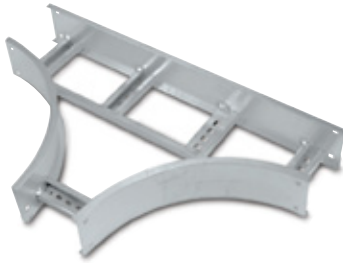
** Manufactured with 4" edge-to-edge rung spacing measured at the center line of fitting.

*** Manufactured with flat sheet inserted under rungs with 9" rung spacing measured at the center line of fitting.

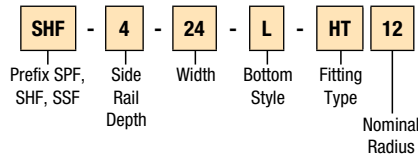
**** Angle is required for HB, VI, VO only.

† Radius is not required for the following Fitting Types: HYR, HYL, HLR, HRR, HSR.

Steel Tray



Catalog Numbering System



Selection Guide

Prefix: SPF (Pre-Galv.), SHF (Hot Dip), SSF (Stainless Steel)

Inside Tray Widths: 6, 9, 12, 18, 24, 30, 36

Angle: 45°, 30°

Nominal Radius: 12, 24, 36, 48

Bottom Styles: L – Ladder, V – Ventilated, S – Solid

Side Rail Depth: 3", 4", 5", 6", 7"

Horizontal Tees

| R | NOMINAL RADIUS | | DIMENSIONS | |
|----|----------------|------------------------|------------|-----|
| | WIDTH | CAT. NO. | X | Y |
| 12 | 6 | PREFIX-(*)-06-(*)-HT12 | 15 | 30 |
| | 9 | PREFIX-(*)-09-(*)-HT12 | 16½ | 33 |
| | 12 | PREFIX-(*)-12-(*)-HT12 | 18 | 36 |
| | 18 | PREFIX-(*)-18-(*)-HT12 | 21 | 42 |
| | 24 | PREFIX-(*)-24-(*)-HT12 | 24 | 48 |
| | 30 | PREFIX-(*)-30-(*)-HT12 | 27 | 54 |
| 24 | 36 | PREFIX-(*)-36-(*)-HT12 | 30 | 60 |
| | 6 | PREFIX-(*)-06-(*)-HT24 | 27 | 54 |
| | 9 | PREFIX-(*)-09-(*)-HT24 | 28½ | 57 |
| | 12 | PREFIX-(*)-12-(*)-HT24 | 30 | 60 |
| | 18 | PREFIX-(*)-18-(*)-HT24 | 33 | 66 |
| | 24 | PREFIX-(*)-24-(*)-HT24 | 36 | 72 |
| 36 | 30 | PREFIX-(*)-30-(*)-HT24 | 39 | 78 |
| | 36 | PREFIX-(*)-36-(*)-HT24 | 42 | 84 |
| | 6 | PREFIX-(*)-06-(*)-HT36 | 39 | 78 |
| | 9 | PREFIX-(*)-09-(*)-HT36 | 40½ | 81 |
| | 12 | PREFIX-(*)-12-(*)-HT36 | 42 | 84 |
| | 18 | PREFIX-(*)-18-(*)-HT36 | 45 | 90 |
| 48 | 24 | PREFIX-(*)-24-(*)-HT36 | 48 | 96 |
| | 30 | PREFIX-(*)-30-(*)-HT36 | 51 | 102 |
| | 36 | PREFIX-(*)-36-(*)-HT36 | 54 | 108 |
| | 6 | PREFIX-(*)-06-(*)-HT48 | 51 | 102 |
| | 9 | PREFIX-(*)-09-(*)-HT48 | 52½ | 105 |
| | 12 | PREFIX-(*)-12-(*)-HT48 | 54 | 108 |
| 36 | 18 | PREFIX-(*)-18-(*)-HT48 | 57 | 114 |
| | 24 | PREFIX-(*)-24-(*)-HT48 | 60 | 120 |
| | 30 | PREFIX-(*)-30-(*)-HT48 | 63 | 126 |
| | 36 | PREFIX-(*)-36-(*)-HT48 | 66 | 132 |

Horizontal Crosses

| R | NOMINAL RADIUS | | DIMENSIONS | |
|----|----------------|------------------------|------------|-----|
| | WIDTH | CAT. NO. | X | Y |
| 12 | 6 | PREFIX-(*)-06-(*)-HX12 | 15 | 30 |
| | 9 | PREFIX-(*)-09-(*)-HX12 | 16½ | 33 |
| | 12 | PREFIX-(*)-12-(*)-HX12 | 18 | 36 |
| | 18 | PREFIX-(*)-18-(*)-HX12 | 21 | 42 |
| | 24 | PREFIX-(*)-24-(*)-HX12 | 24 | 48 |
| | 30 | PREFIX-(*)-30-(*)-HX12 | 27 | 54 |
| 24 | 36 | PREFIX-(*)-36-(*)-HX12 | 30 | 60 |
| | 6 | PREFIX-(*)-06-(*)-HX24 | 27 | 54 |
| | 9 | PREFIX-(*)-09-(*)-HX24 | 28½ | 57 |
| | 12 | PREFIX-(*)-12-(*)-HX24 | 30 | 60 |
| | 18 | PREFIX-(*)-18-(*)-HX24 | 33 | 66 |
| | 24 | PREFIX-(*)-24-(*)-HX24 | 36 | 72 |
| 36 | 30 | PREFIX-(*)-30-(*)-HX24 | 39 | 78 |
| | 36 | PREFIX-(*)-36-(*)-HX24 | 42 | 84 |
| | 6 | PREFIX-(*)-06-(*)-HX36 | 39 | 78 |
| | 9 | PREFIX-(*)-09-(*)-HX36 | 40½ | 81 |
| | 12 | PREFIX-(*)-12-(*)-HX36 | 42 | 84 |
| | 18 | PREFIX-(*)-18-(*)-HX36 | 45 | 90 |
| 48 | 24 | PREFIX-(*)-24-(*)-HX36 | 48 | 96 |
| | 30 | PREFIX-(*)-30-(*)-HX36 | 51 | 102 |
| | 36 | PREFIX-(*)-36-(*)-HX36 | 54 | 108 |
| | 6 | PREFIX-(*)-06-(*)-HX48 | 51 | 102 |
| | 9 | PREFIX-(*)-09-(*)-HX48 | 52½ | 105 |
| | 12 | PREFIX-(*)-12-(*)-HX48 | 54 | 108 |
| 36 | 18 | PREFIX-(*)-18-(*)-HX48 | 57 | 114 |
| | 24 | PREFIX-(*)-24-(*)-HX48 | 60 | 120 |
| | 30 | PREFIX-(*)-30-(*)-HX48 | 63 | 126 |
| | 36 | PREFIX-(*)-36-(*)-HX48 | 66 | 132 |

(*) Insert side rail depth. (*) Insert bottom style to complete Catalog Number. Tees include two pairs/Crosses include three pairs of splice plates with hardware.