

Color-Keyed® Connectors

C
o
m
p
r
e
s
s
i
o
n

Color-Keyed® Special Lugs for Special Problems – Angled, Shaped and Flared the Way You Need Them



Thomas & Betts can solve your difficult wire bending and terminating problems in confined power distribution panels, switchgear and motor control enclosures.

We have the design and production capability to deliver exactly the type lug you need, shaped the way you need.

- Straight, 45° and 90° angle
- Stacking or non-stacking
- Narrow tongue or standard
- Tin, silver and nickel

Thomas & Betts offers an extensive line of copper Color-Keyed® lugs for #8 AWG through 1000 kcmil flex and code cables. The lug tongues are modified in several different configurations to meet your exact needs: 45° and 90° bend angles, narrow tongues to fit into circuit breakers, offset tongues to stack two cables and special stud hole drilling. These special configurations let you:

1. run cable directly to the bus bar with no bending.
2. terminate into very narrow spaces.
3. utilize minimal bus bar space.

The specially designed lugs help you “clean up” your cabling in crowded enclosures.

The photographs show some examples of how and where the lugs can be used.

Customized Color-Keyed® Connectors for Copper Cables

- Standard and special tongue angles, stacking and non-stacking, bolt holes sizes and centers, protective platings.
- Specially modified one and two hole copper Color-Keyed® compression lugs, Series 54100, 54200, 54850BE and 54930BE for flex and code copper stranded cables. Material high conductivity wrought copper.
- Minimum order quantity: Standard package quantity by cable size. Consult your Regional Sales Office for price and delivery. All customized lugs are made to order and non-cancelable.



Color-Keyed® Connectors

Order Form (to be scanned or photocopied)

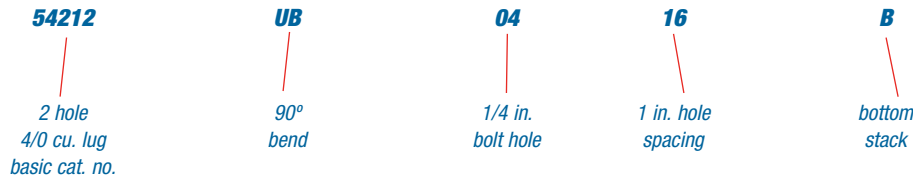
Catalogue No. _____ Qty. _____

Design Controls and Requirements

All "MADE-UP" catalogue numbers start with a standard or basic catalogue number and are followed by the customer-required extra features: tongue shape, bolt hole size, distance between bolt holes, stacking, plating and inspection hole (peep hole). A code letter or a number has been assigned to each extra feature. See CODE TABLE.

Notes: 1) Lack of any of the extra features on the "MADE-UP" catalogue number means that the standard Cat. No. features are prevalent.
 2) If either bolt hole size or distance between bolt holes needs to be changed from standard Cat. No., both code numbers will appear on the "MADE-UP" Cat. No. (See example below)

CAT. NO. 54212UB0416BSP



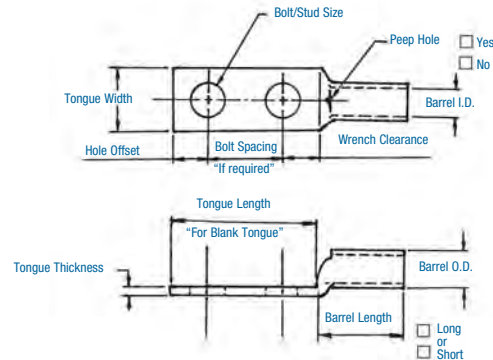
CODE TABLE

TONGUE SHAPE		BOLT HOLES		CODE	BOLT HOLE CENTERS		STACKING		FINISH (PLATING)		INSPECTION HOLE (LONG BARREL)		INSPECTION HOLE (SHORT BARREL)	
TYPE	CODE				CENTER TO CENTER	CODE	TYPE	CODE	TYPE 1	CODE	I.D.	CODE	I.D.	CODE
45°	UF	#8	0.173	02	1/2 in.	08	Top	T**	Silver Plate	SP	Peep Hole	PH	Blind End	BE
90°	UB	#10	0.204	03	5/8 in.	10	Bottom	B	Lead Plate	LP				
Blank	BT	1/4 in.	0.281	04	3/4 in.	12			Nickel Plate	NP				
(No Bolt Hole)		5/16 in.	0.344	05	1/8 in.	14			Plain Finish	PF				
		3/8 in.	0.406	06	1 in.	16			No Marking	NM				
		1/2 in.	0.531	08	1-1/8 in.	18								
		5/8 in.	0.656	10	1-1/4 in.	20								
		3/4 in.	0.812	12	1-3/8 in.	22								
		1/8 in.	0.937	14	1-1/2 in.	24								
		1 in.	1.062	16	1-5/8 in.	26								
					1-3/4 in.	28								
					*1-7/8 in.	30								
					*2 in.	32								

* These Bolt centers not available for bolt holes larger than 13/16 in.

** Not required for 45° & 90° Top Stacking.

Cable	Code	<input type="checkbox"/>
	Weld	<input type="checkbox"/>
<input type="checkbox"/> #8	<input type="checkbox"/> #6	<input type="checkbox"/> #4
<input type="checkbox"/> #2	<input type="checkbox"/> #1	<input type="checkbox"/> 1/0
<input type="checkbox"/> 2/0	<input type="checkbox"/> 3/0	<input type="checkbox"/> 4/0
<input type="checkbox"/> 250 kcmil & up (Code Only)		



C o m p r e s s i o n

Tongue Specifications – See Chart “A” for Dimensions

C o m p r e s s i o n

Stud Sizes		
<input type="checkbox"/> #8	<input type="checkbox"/> #10	<input type="checkbox"/> 1/4 in.
<input type="checkbox"/> 5/16 in.	<input type="checkbox"/> 3/8 in.	<input type="checkbox"/> 1/2 in.
<input type="checkbox"/> 5/8 in.	<input type="checkbox"/> 3/4 in.	<input type="checkbox"/> 7/8 in.
<input type="checkbox"/> 1 in.		

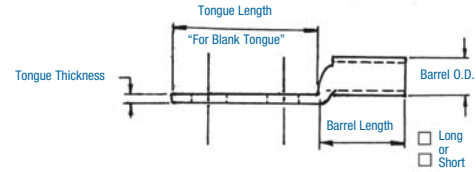
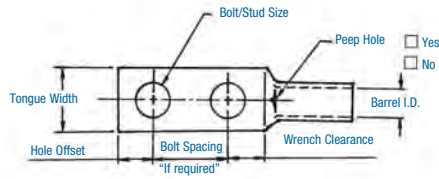


Chart A

NOMINAL BOLT HOLE	HOLE OFFSET	MIN. WRENCH CLEARANCE	TONGUE WIDTH Cable Size										
			#8 CODE #8 WELD	#6 CODE #6 WELD	#4 CODE	#2 CODE #4 WELD	#1 CODE #2 WELD	1/0 CODE #1 WELD	2/0 CODE 1/0 WELD	3/0 CODE 2/0 WELD	4/0 CODE 3/0 WELD	250 CODE	
#8	0.173	0.200	0.240	0.406	0.437	0.562	0.593	0.672	0.750	0.825	0.937	1.030	1.125
#10	0.204	0.218	0.250	0.406	0.437	0.562	0.593	0.672	0.750	0.825	0.937	1.030	1.125
1/4	0.281	0.250	0.312	0.469	0.500	0.562	0.593	0.672	0.750	0.825	0.937	1.030	1.125
5/16	0.344	0.375	0.406	0.562	0.562	0.562	0.675	0.672	0.750	0.825	0.937	1.030	1.125
3/8	0.406	0.375	0.440	0.578	0.578	0.594	0.675	0.672	0.750	0.825	0.937	1.030	1.125
1/2	0.531	0.500	0.562	-	-	-	0.750	0.750	0.750	0.825	0.937	1.030	1.125
5/8	0.656	0.812	0.875	-	-	-	-	-	-	-	0.937	1.030	1.125
3/4	0.812	0.750	0.770	-	-	-	-	-	-	-	-	-	-
*7/8	0.937	0.875	0.890	-	-	-	-	-	-	-	-	-	-
*1	1.062	0.937	1.000	-	-	-	-	-	-	-	-	-	-

* These bolt holes are available in one hole lug only. Dimensions are in inches.

Chart B

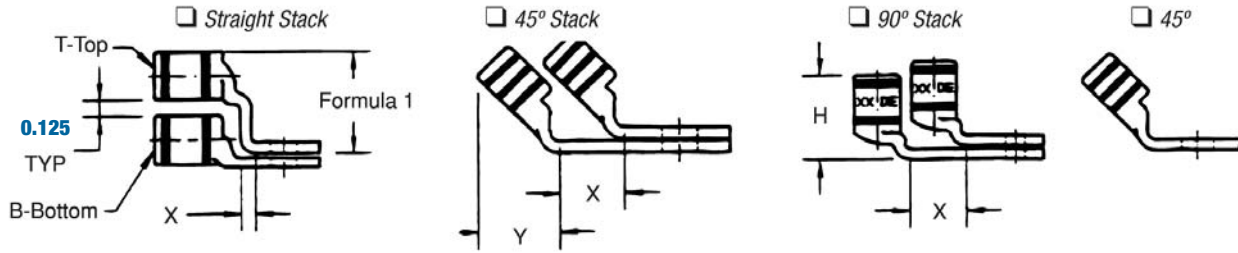
CABLE SIZE	TONGUE THICKNESS	STRAIGHT LUG BARREL LENGTH		BARREL		STACKED LUGS (see diagram on page 11)			DIM "Y"		DIM "H"	
		SHORT	LONG	O.D.	I.D.	DIM "X"			SHORT	LONG	SHORT	LONG
						STRAIGHT	45°	90°				
#8	0.080	0.635	0.935	0.260	0.180	0.158	0.478	0.394	0.595	0.808	0.779	1.079
#6	0.081	0.675	0.975	0.296	0.215	0.134	0.544	0.432	0.587	0.799	0.767	10.67
#4	0.099	0.685	0.985	0.365	0.266	0.175	0.622	0.502	0.637	0.849	0.838	1.138
#2	0.108	0.815	1.115	0.410	0.302	0.216	0.649	0.535	0.711	0.923	0.958	1.258
#1	0.106	0.825	1.275	0.467	0.361	0.212	0.731	0.592	0.710	1.028	0.956	1.406
1/0	0.125	0.975	1.325	0.520	0.396	0.250	0.789	0.646	0.794	1.042	1.075	1.425
2/0	0.125	0.965	1.315	0.571	0.446	0.250	0.859	0.696	0.829	1.077	1.125	1.475
3/0	0.125	1.085	1.435	0.632	0.507	0.250	0.946	0.757	0.900	1.148	1.225	1.575
4/0	0.137	1.255	1.705	0.701	0.564	0.274	1.031	0.826	1.015	1.333	1.387	1.837
250	0.137	1.375	1.925	0.766	0.629	0.274	1.123	0.891	1.085	1.474	1.487	2.037
300	0.153	1.900	2.675	0.850	0.660	0.459	1.226	0.975	1.180	1.726	1.924	2.679
350	0.177	2.090	2.896	0.926	0.720	0.531	1.333	1.103	1.267	1.830	2.096	2.896
400	0.173	2.460	2.980	0.960	0.757	0.519	1.370	1.085	1.551	1.913	2.484	2.984
500	0.218	2.670	3.610	1.100	0.852	0.654	1.514	1.225	1.629	2.266	2.669	3.619
600	0.244	2.900	3.490	1.200	0.926	0.732	1.630	1.325	1.762	2.147	2.897	3.497
700	0.228	2.784	-	1.255	0.997	0.684	1.662	1.375	1.780	-	3.011	-
750	0.270	3.050	3.925	1.330	1.030	0.810	1.745	1.455	1.827	2.434	3.050	3.925
800	0.266	3.213	-	1.375	1.079	0.800	1.728	1.625	1.952	2.787	3.213	4.554
900	0.313	3.450	4.550	1.500	1.145	0.940	1.900	1.650	2.065	-	1.387	-
1,000	0.297	3.356	4.500	1.550	1.203	0.890	2.070	1.675	2.031	2.787	1.487	4.506

Note: Stacking lugs are available for one bolt only. Consult your Regional Sales Office: Straight: 700 kcmil & up, 45°: 400 kcmil & up, 90°: 500 kcmil & up.

Dimensions are in inches.

Color-Keyed® Connectors

Tongue Specifications – See Chart “A” for Dimensions



Formula 1 = (0.125 + 2 (OD) + 0.037 - Tongue Thickness)

Chart C

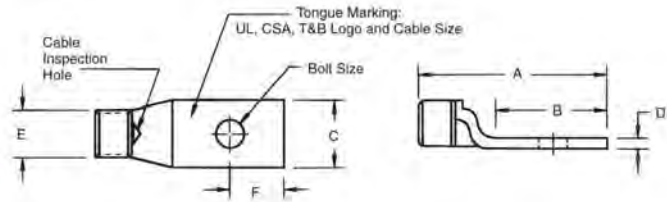
TONGUE WIDTH 0.030 / CODE CABLE SIZE											
BOLT HOLE SIZE	300 KCMIL 4/0 WELD	350 KCMIL	400 KCMIL	500 KCMIL 400 WELD	600 KCMIL 500 WELD	1325/24	700 KCMIL	750 KCMIL	800 KCMIL	900 KCMIL	1000 KCMIL
#8	-	-	-	-	-	-	-	-	-	-	-
#10	-	-	-	-	-	-	-	-	-	-	-
1/4	1.250	1.355	1.410	1.605	1.745	1.805	1.840	1.935	2.010	2.180	2.265
5/16	1.250	1.355	1.410	1.605	1.745	1.805	1.840	1.935	2.010	2.180	2.265
3/8	1.250	1.355	1.410	1.605	1.745	1.805	1.840	1.935	2.010	2.180	2.265
1/2	1.250	1.355	1.410	1.605	1.745	1.805	1.840	1.935	2.010	2.180	2.265
5/8	1.250	1.355	1.410	1.605	1.745	1.805	1.840	1.935	2.010	2.180	2.265
3/4	1.250	1.355	1.410	1.605	1.745	1.805	1.840	1.935	2.010	2.180	2.265
*7/8	-	-	-	1.605	1.745	1.805	1.840	1.935	2.010	2.180	2.265
*1	-	-	-	-	1.745	1.805	1.840	1.935	2.010	2.180	2.265

* These bolt holes are available in one hole lug only.

Dimensions are in inches.

Connectors for Copper Conductors

One-Hole Lugs – Standard Barrel Certified to 600V and Recommended up to 35 kV*



Material: High-Conductivity Wrought Copper

Finish: Electro Tin Plate



Compression

CAT. NO.	WIRE SIZE		Bolt Size	Dimensions in. (mm)						Die Code	Die Color
	Code	Flex Class G, H, I, K, M		A	B	C	D	E	F		
54101	#14-10 AWG		1/4	1.23 (31.2)	0.56 (14.2)	0.50 (12.7)	0.05 (1.3)	0.20 (5.1)	0.25 (6.4)	ERG2002	Yellow
256-30695-1351			#8	1.36 (34.5)	0.68 (17.3)	0.36 (9.1)	0.05 (1.3)	0.20 (5.1)	0.25 (6.4)	ERG2002	Yellow
256-30695-1352			1/4	1.36 (34.5)	0.68 (17.3)	0.41 (10.4)	0.05 (1.3)	0.20 (5.1)	0.25 (6.4)	ERG2002	Yellow
256-30695-263			1/4	1.69 (43.0)	0.81 (20.6)	0.50 (12.7)	0.07 (1.8)	0.20 (5.1)	0.25 (6.4)	ERG2002	Yellow
54104	#8 AWG	#8 str., #23 Navy #8 Weld 37/24 0.180	#10	1.16 (29.5)	0.50 (12.7)	0.39 (9.9)	0.08 (2.0)	0.25 (6.4)	0.22 (5.6)	21	Red
54130			1/4	1.20 (30.5)	0.61 (15.5)	0.45 (11.4)	0.07 (1.8)	0.25 (6.4)	0.25 (6.4)	21	Red
54131			5/16	1.33 (33.8)	0.64 (16.3)	0.56 (14.2)	0.05 (1.3)	0.25 (6.4)	0.28 (7.1)	21	Red
54132			3/8	1.33 (33.8)	0.64 (16.3)	0.56 (14.2)	0.05 (1.3)	0.25 (6.4)	0.28 (7.1)	21	Red
256-30695-424			1/2	1.75 (44.5)	1.31 (33.3)	1.00 (25.4)	0.13 (3.3)	0.25 (6.4)	0.50 (12.7)	21	Red
256-30695-1361	#6 AWG	#6 str., #30 Navy #6 Weld 61/24 133/0.014, 0.227	#12	1.23 (31.2)	0.53 (13.5)	0.44 (11.2)	0.07 (1.8)	0.31 (7.8)	0.22 (5.6)	24	Blue
54134			#10	1.23 (31.2)	0.53 (13.5)	0.44 (11.2)	0.07 (1.8)	0.31 (7.8)	0.22 (5.6)	24	Blue
54105			1/4	1.23 (31.2)	0.53 (13.5)	0.44 (11.2)	0.07 (1.8)	0.31 (7.8)	0.22 (5.6)	24	Blue
54135			5/16	1.41 (35.8)	0.67 (17.0)	0.60 (15.2)	0.07 (1.8)	0.31 (7.8)	0.31 (7.9)	24	Blue
54136			3/8	1.41 (35.8)	0.67 (17.0)	0.60 (15.2)	0.07 (1.8)	0.31 (7.8)	0.31 (7.9)	24	Blue
256-30695-282			3/8	1.41 (35.8)	0.75 (19.1)	0.56 (14.2)	0.06 (1.5)	0.31 (7.8)	0.31 (7.9)	24	Blue
256-30695-422			1/2	1.75 (44.5)	1.31 (33.3)	1.00 (25.4)	0.13 (3.3)	0.31 (7.8)	0.50 (12.7)	24	Blue
256-30595-1362			#12	1.38 (35.1)	0.60 (15.2)	0.55 (14.0)	0.09 (2.3)	0.37 (9.4)	0.25 (6.4)	29	Grey
54138	#4 AWG	#5 str., #40-50 Navy 91/24 133/0.0177, 49/0.029 0.265	#10	1.38 (35.1)	0.60 (15.2)	0.55 (14.0)	0.09 (2.3)	0.37 (9.4)	0.25 (6.4)	29	Grey
54106			1/4	1.38 (35.1)	0.60 (15.2)	0.55 (14.0)	0.09 (2.3)	0.37 (9.4)	0.25 (6.4)	29	Grey
54139			5/16	1.42 (36.1)	0.66 (16.8)	0.61 (15.5)	0.07 (1.8)	0.37 (9.4)	0.31 (7.9)	29	Grey
54140			3/8	1.42 (36.1)	0.66 (16.8)	0.61 (15.5)	0.07 (1.8)	0.37 (9.4)	0.31 (7.9)	29	Grey
256-30695-233			3/8	1.56 (37.0)	0.75 (19.1)	0.59 (15.0)	0.06 (1.5)	0.37 (9.4)	0.31 (7.9)	29	Grey
256-30695-264	1/2	2.20 (56.0)	1.40 (35.6)	1.00 (25.4)	0.06 (1.5)	0.37 (9.4)	0.50 (12.7)	29	Grey		
54107	#2 AWG	#3 str., #60 Navy 125/24 #4 Weld 0.300	1/4	1.50 (38.1)	0.65 (16.5)	0.59 (15.0)	0.11 (2.8)	0.41 (10.4)	0.25 (6.4)	33	Brown
54142-TB			5/16	1.73 (43.9)	0.88 (22.4)	0.59 (15.0)	0.11 (2.8)	0.41 (10.4)	0.38 (9.7)	33	Brown
54143-TB			3/8	1.65 (41.9)	0.80 (20.3)	0.59 (15.0)	0.11 (2.8)	0.41 (10.4)	0.38 (9.7)	33	Brown
54145-TB			1/2	1.92 (48.8)	1.08 (27.4)	0.75 (19.1)	0.08 (2.0)	0.41 (10.4)	0.50 (12.7)	33	Brown
54108	#1 AWG	#2 str., #75 Navy, #2 Weld 150/24 175/24 133/0.0223, 0.360	1/4	1.50 (38.1)	0.65 (16.5)	0.68 (17.3)	0.11 (2.8)	0.47 (11.9)	0.25 (6.4)	37	Green
54147			5/16	1.73 (43.9)	0.93 (23.6)	0.68 (17.3)	0.11 (2.8)	0.47 (11.9)	0.38 (9.7)	37	Green
54148			3/8	1.78 (45.2)	0.98 (24.9)	0.68 (17.3)	0.11 (2.8)	0.47 (11.9)	0.38 (9.7)	37	Green
54150			1/2	2.10 (53.3)	1.25 (31.8)	0.76 (19.3)	0.11 (2.8)	0.47 (11.9)	0.50 (12.7)	37	Green
54152-TB	1/0 AWG	1 AWG, #100 Navy #1 Weld 225/24 133/0.0254, 0.389 min.	1/4	1.60 (40.6)	0.65 (16.5)	0.75 (19.1)	0.13 (3.3)	0.52 (13.2)	0.25 (6.4)	42	Pink
54153-TB			5/16	1.83 (46.5)	0.88 (22.4)	0.75 (19.1)	0.13 (3.3)	0.52 (13.2)	0.38 (9.7)	42	Pink
54109			3/8	1.88 (47.8)	0.93 (23.6)	0.75 (19.1)	0.13 (3.3)	0.52 (13.2)	0.38 (9.7)	42	Pink
54155-TB			1/2	2.20 (55.9)	1.25 (31.8)	0.75 (19.1)	0.13 (3.3)	0.52 (13.2)	0.50 (12.7)	42	Pink
256-30695-1383	5/8	2.54 (64.5)	1.50 (38.1)	0.88 (22.4)	0.13 (3.3)	0.52 (13.2)	0.63 (16.0)	42	Pink		
54157	2/0 AWG	1/0 AWG, #125 Navy 1/0 Weld 275/24 427/0.0155, 438 min. 133/0.0282	1/4	1.65 (41.9)	0.65 (16.5)	0.83 (21.1)	0.13 (3.3)	0.57 (14.5)	0.25 (6.4)	45	Black
54158			5/16	1.88 (47.8)	0.88 (22.4)	0.83 (21.1)	0.13 (3.3)	0.57 (14.5)	0.38 (9.7)	45	Black
54110			3/8	1.93 (49.0)	0.93 (23.6)	0.83 (21.1)	0.13 (3.3)	0.57 (14.5)	0.38 (9.7)	45	Black
54160			1/2	2.25 (57.2)	1.25 (31.6)	0.83 (21.1)	0.13 (3.3)	0.57 (14.5)	0.50 (12.7)	45	Black
256-30695-131			5/8	2.56 (65.0)	1.50 (38.1)	0.83 (21.1)	0.13 (3.3)	0.57 (14.5)	0.63 (16.0)	45	Black

Call your Regional Sales Office for sizes not listed.

Tooling: pp. 116-145

Die Selector Chart: pp.146-153

* For installations from 16 kV up to 35 kV, consult shielded cable manufacturers for stress relief and insulation requirements.