

Load Feeders and Motor Starters for Use in the Control Cabinet

SIRIUS 3RA6 Compact Starters

General data

Diagnostics options

The compact starter provides the following diagnostics options:

- With LEDs
 - Connection to the control voltage
 - Position of the main contacts
- With mechanical display
 - Tripping due to overload
 - Tripping due to short circuit
 - Tripping due to malfunction (end of service life reached because of worn switching contacts or a worn switching mechanism or faults in the control electronics)

These states can also be evaluated in the higher-level control system:

- With parallel wiring using the integrated auxiliary and signaling switches of the compact starter
- With AS-Interface or IO-Link in even greater detail using the respective communication interface

Four complement versions for 3RA61 and 3RA62 compact starters

- For standard mounting rail or screw fixing:
Basic version including 1 pair of main circuit terminals and 1 pair of control circuit terminals
- For standard mounting rail or screw fixing when using the AS-i add-on module:
Without control circuit terminals because the AS-i add-on module is plugged on instead
- For use with the infeed system for 3RA6:
Without main circuit terminals because they are supplied with the infeed system and the expansion modules
- For use with the infeed system for 3RA6 and AS-i add-on module:
Without terminal complement (also for reordering when replacing the compact starter)

The control circuit terminals are always required by the compact starters for IO-Link; the main circuit terminals depend on the use of the infeed system.

Article No. scheme

Digit of the Article No.	1st - 4th	5th	6th	7th	8th	9th	10th	11th	12th
SIRIUS 3RA6 compact starters	3 R A 6								
Version (direct-on-line starter = 1, reversing starter = 2, direct-on-line starter for IO-Link = 4, reversing starter for IO-Link = 5, infeed system = 8, accessories = 9)		<input type="checkbox"/>							
Details of accessories			<input type="checkbox"/>	<input type="checkbox"/>					
Connection method (0 = without terminals, 1 = screw terminals, 2 = spring-type terminals)					<input type="checkbox"/>				
Setting range						<input type="checkbox"/>			
Rated control supply voltage							<input type="checkbox"/>	<input type="checkbox"/>	
Terminals complement variant									<input type="checkbox"/>
Special versions									
Example	3 R A 6	1	2	0	-	0	A	B	3 0

Note:

The Article No. scheme is presented here merely for information purposes and for better understanding of the logic behind the article numbers.

For your orders, please use the article numbers quoted in the catalog in the Selection and ordering data.

More components of the 3RA6

Apart from the control supply voltage, "Overload" (1 CO) and "Short circuit / Function fault" (1 NO) signaling contacts are already integrated into the 3RA61/3RA62 – and lockable via two 6-pole removable control circuit terminals. The 3RA61 has two auxiliary contacts (1 NO + 1 NC) for displaying the position of the main contacts. Unlike the 3RA61 direct-on-line starter, the 3RA62 reversing starter has one auxiliary contact (1 NO) per direction of rotation per main contact.

Available for the 3RA61 and 3RA64 direct-on-line starters is a slot for an optional auxiliary switch block (optionally 2 NO, 2 NC or 1 NO + 1 NC) and for the 3RA62 and 3RA65 reversing starters there are two slots (for auxiliary switch blocks, see "Accessories" on page 8/73).

Positively-driven operation of the auxiliary contacts

Positively-driven operation between individual auxiliary circuits exists for the compact starter in the version as a direct-on-line starter for parallel wiring (3RA61) between the auxiliary circuits of the NC contacts (NC 21-22) and the NO contacts (NO 13-14) in the basic unit.

In addition, the optional auxiliary switch block offers positively driven contacts in the 3RA6913-1A version, each with one normally closed contact and one normally open contact.

Load Feeders and Motor Starters for Use in the Control Cabinet

SIRIUS 3RA6 Compact Starters

Infeed system for 3RA6

Version	DT	Article No.	Price per PU	PU (UNIT, SET, M)	PS*	PG
			Configurator			

Expansion modules



3RA6822-0AB

Two-socket expansion modules

With screw or spring-type connection and integrated PE bar

With 2 sockets for 2 direct-on-line starters or 1 reversing starter

Expansion plug and 2 connecting wedges included in the scope of supply.

- Screw terminals

A

Screw terminals


3RA6822-0AB

1

1 unit

42F



3RA6822-0AC

- Spring-type terminals

A

Spring-type terminals


3RA6822-0AC

1

1 unit

42F



3RA6823-0AB

Three-socket expansion modules

With screw or spring-type connection and integrated PE bar

With 3 sockets for 3 direct-on-line starters or 1 direct-on-line starter and 1 reversing starter

Expansion plug and 2 connecting wedges included in the scope of supply.

- Screw terminals

A

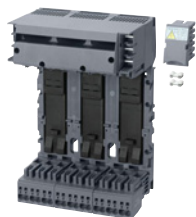
Screw terminals


3RA6823-0AB

1

1 unit

42F



3RA6823-0AC

- Spring-type terminals

A

Spring-type terminals


3RA6823-0AC

1

1 unit

42F

For the online configurator, see www.siemens.com/sirius/configurators.