

### Enclosures

Digit of the Article No.	1 <sup>st</sup> - 4 <sup>th</sup>	5 <sup>th</sup>	6 <sup>th</sup>	7 <sup>th</sup>	-	8 <sup>th</sup>	9 <sup>th</sup>	10 <sup>th</sup>	11 <sup>th</sup>	12 <sup>th</sup>	-	13 <sup>th</sup>	14 <sup>th</sup>	15 <sup>th</sup>	16 <sup>th</sup>	
	□□□□	□	□	□	-	□	□	□	□	□	-	□	□	□	□	
<b>SIRIUS ACT pushbuttons and indicator lights</b>	<b>3SU1</b>															
Device type	8 = enclosure															
		<b>8</b>														
Material (enclosure/front ring)	0 = plastic, black plastic 5 = metal, shiny metal															
			□													
Number of command points	1 = 1 command point ... 6 = 6 command points															
				□												
Type of enclosure	0 = surface-mounted 1 = 4-position selector and coordinate switch 2 = palm switch 3 = two-hand operation console															
						□										
Equipment	e.g. command point, inscription, module															
							□	□								
Communication capability	0 = none 1 = AS-i															
									□							
Ambient condition	0 = standard 1 = ATEX															
										□						
Mounting/connection of modules	0 = none 1 = front plate mounting, screw terminals 2 = base mounting, screw terminals 3 = base mounting, spring-type terminals															
												□				
Cable exit from enclosure	A = none G = direct entry of AS-i flat cable at top/on right H = ASi insulation piercing method at top/on right															
													□			
Design of enclosure top	A = command point in center B = with recess for labeling plate C = with protective collar D = 4 additional holes (two-hand operation console) E = 8 additional premachined breaking points (two-hand operation console)															
															□	
Color of enclosure top	1 = gray 2 = yellow															
																□
<b>Example</b>	<b>3SU1</b>	<b>8</b>	<b>0</b>	<b>1</b>	<b>-</b>	<b>0</b>	<b>A</b>	<b>A</b>	<b>0</b>	<b>0</b>	<b>-</b>	<b>0</b>	<b>A</b>	<b>A</b>	<b>2</b>	

### Accessories

Digit of the Article No.	1 <sup>st</sup> - 4 <sup>th</sup>	5 <sup>th</sup>	6 <sup>th</sup>	7 <sup>th</sup>	-	8 <sup>th</sup>	9 <sup>th</sup>	10 <sup>th</sup>	11 <sup>th</sup>	12 <sup>th</sup>	-	13 <sup>th</sup>	14 <sup>th</sup>	15 <sup>th</sup>	16 <sup>th</sup>	
	□□□□	□	□	□	-	□	□	□	□	□	-	□	□	□	□	
<b>SIRIUS ACT pushbuttons and indicator lights</b>	<b>3SU1</b>															
Device type	9 = accessories															
		<b>9</b>														
Material	0 = plastic, black 3 = metal/plastic 5 = metal, shiny 6 = metal, matte															
			□													
Illumination	0 = non-illuminated 1 = illuminated															
				□												
Type of accessory (labels, protection, actuator, enclosure)	e.g. 0AB = insert label															
						□	□	□								
Color	e.g. 10 = black, 20 = red															
									□	□						
Marking	e.g. 0AA = none 0AB = ON 0AT = EMERGENCY STOP															
												□	□	□		
Ambient condition	0 = standard 1 = ATEX															
																□
<b>Example</b>	<b>3SU1</b>	<b>9</b>	<b>0</b>	<b>0</b>	<b>-</b>	<b>0</b>	<b>A</b>	<b>B</b>	<b>7</b>	<b>1</b>	<b>-</b>	<b>0</b>	<b>A</b>	<b>B</b>	<b>0</b>	

### Note:

The Article No. scheme is presented here merely for information purposes and for better understanding of the logic behind the article numbers.  
For your orders, please use the article numbers quoted in the Catalog in the Selection and ordering data.

## General data

### Benefits

#### Highlights of SIRIUS ACT

##### Design

- Improved look of the system
- Combination of design and functionality

##### Easy handling

- Self-explanatory and fast installation
- One-handed installation
- Components can be mounted with holder removed
- No special tools required, simple size 2 screwdriver (cross-tip DIN ISO 87641PZD1, flat-head DIN ISO 2380-1 A/B 1x4.5) is sufficient
- Simple geometry for mounting holes

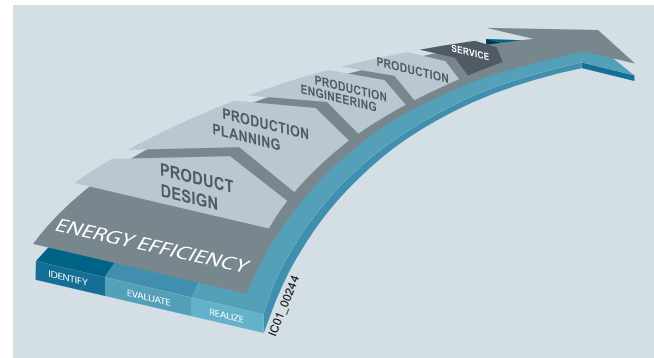
##### Ruggedness

- Media resistance
- Suitable for use in extreme environments
- Design stability according to use

##### Communication

- Connection to the most commonly used communication systems (PROFINET, AS-Interface, IO-Link)
- Can be integrated easily via the TIA Portal

#### Advantages through energy efficiency



Energy management in industry

Overview of the energy management process

We offer you a unique portfolio for industrial energy management, using an energy management system that helps to optimally define your energy needs. We split up our industrial energy management into three phases – identify, evaluate, and realize – and we support you with the appropriate hardware and software solutions in every process phase.

The innovative products of the SIRIUS industrial controls portfolio can also make a substantial contribution to a plant's energy efficiency (see [www.siemens.com/sirius/energysaving](http://www.siemens.com/sirius/energysaving)).

SIRIUS ACT pushbuttons and indicator lights contribute to energy efficiency throughout the plant as follows:

- Lower power consumption by means of LED technology
- Long service life

### Application

#### Environmental conditions

The pushbuttons and indicator lights are climate-proof (KTW 24) and suitable for standard industrial applications and operation in marine applications.

#### "Intrinsic safety" type of protection EEx i according to ATEX directive 94/9/EC

The pushbuttons and indicator lights can also be used in hazardous areas. Special versions of the 3SU1400 contact modules and 3SU1401 LED modules (only with screw terminals).

Explosion protection category for dust:  
II 2D Ex tb IIIC T120°C Db

#### Safety EMERGENCY STOP pushbuttons according to ISO 13850

For controls according to IEC 60204-1 or EN 60204-1, the SIRIUS ACT mushroom pushbuttons are suitable for use as safety EMERGENCY STOP pushbuttons.

#### Safety circuits

The IEC 60947-5-1 and EN 60947-5-1 standards require positive opening. This means that for the purposes of personal safety, the assured opening of NC contacts is expressly stipulated for the electrical equipment of machines in all safety circuits and marked according to IEC 60947-5-1 with the symbol (☞).

Category 4 according to EN ISO 13849-1 can be attained with the EMERGENCY STOP mushroom pushbuttons if the corresponding fail-safe evaluation units are selected and correctly installed, e.g. the 3SK11 safety relays, the 3RK3 Modular Safety System (see [Catalog IC 14, Chapter 13, "Safety Systems"](#)) or matching units from the ASIsafe, SIMATIC or SINUMERIK product ranges.

The SIRIUS ACT pushbuttons and indicator lights can be connected to the AS-Interface communication system quickly and safely.

The following solutions are available:

- AS-Interface module
- AS-Interface module in safety-related version for EMERGENCY STOP mushroom pushbutton
- Ready-fitted AS-Interface enclosures with 1 to 6 command points

#### IO-Link

The SIRIUS ACT pushbuttons and indicator lights can be connected to IO-Link quickly and safely. The connection is made via a special IO-Link-module.

## Technical specifications

Type	3SU1..0-AA 3SU1..0-JA		3SU1..1-AA 3SU1..1-JA		3SU1..0-AB 3SU1..0-BB 3SU1..0-CB 3SU1..0-DB 3SU1..0-JB		3SU1..1-AB 3SU1..1-BB 3SU1..1-JB		3SU1..0-HC	
Product version	<b>Pushbutton</b>									
<b>Operating principle of actuating element</b>	Latching				Momentary contact				Momentary contact, latching	
<b>Optional expansion of product by light source</b>	No		Yes		No		Yes		No	
<b>Mechanical endurance (operating cycles) typical</b>	1 000 000				10 000 000		3 000 000		1 000 000	
<b>Switching frequency maximum</b>	1/h		1 800		3 600				1 800	
<b>Shock resistance for devices without incandescent lamp</b> acc. to IEC 60068-2-27	11 ms, 50 g, half-sine									
<b>Vibration resistance</b> acc. to IEC 60068-2-6	20 ... 500 Hz: 5 g									
<b>IP degree of protection</b>	IP66, IP67, IP69K; NEMA Type 1, 3, 3R, 4, 4X, 12 <sup>1)</sup>									
<b>Climate class in operation</b> acc. to EN 60721	3K6, 3C3, 3S2, 3M6									
<b>Ambient temperature</b>										
• During operation	°C		-25 ... +70							
• During storage	°C		-40 ... +80							

Type	3SU1.00-AA		3SU1.00-BA 3SU1.00-CA 3SU1.30-AA 3SU1.30-BA 3SU1.50-AA 3SU1.50-BA 3SU1.50-CA		3SU1.50-EA		3SU1.01-AA 3SU1.01-BA 3SU1.51-AA 3SU1.51-BA 3SU1.51-CA		3SU1.00-AD 3SU1.00-BD 3SU1.00-CD 3SU1.30-AD 3SU1.50-AD 3SU1.50-BD 3SU1.50-CD		3SU1.50-ED		3SU1.01-AD 3SU1.01-BD 3SU1.31-AD 3SU1.31-BD	
Product version	<b>Mushroom pushbutton</b>													
<b>Operating principle of actuating element</b>	Latching						Momentary contact							
<b>Optional expansion of product by light source</b>	No						Yes		No				Yes	
<b>Mechanical endurance (operating cycles) typical</b>	500 000		300 000		500 000		10 000 000		300 000		3 000 000			
<b>Switching frequency maximum</b>	1/h		3 600		1 800				3 600		1 800		3 600	
<b>Shock resistance for devices without incandescent lamp</b> acc. to IEC 60068-2-27	11 ms, 50 g, half-sine													
<b>Vibration resistance</b> acc. to IEC 60068-2-6	20 ... 500 Hz: 5 g													
<b>IP degree of protection</b>	IP66, IP67, IP69K; NEMA Type 1, 3, 3R, 4, 4X, 12													
<b>Climate class in operation</b> acc. to EN 60721	3K6, 3C3, 3S2, 3M6													
<b>Ambient temperature</b>														
• During operation	°C		-25 ... +70											
• During storage	°C		-40 ... +80											

Type	3SU1...-N		3SU1...-L		3SU1...-J		3SU1...-H		3SU1...-G	
Product version	<b>EMERGENCY STOP mushroom pushbutton</b>									
<b>Mechanical endurance (operating cycles) typical</b>	300 000									
<b>Switching frequency maximum</b>	1/h		600							
<b>Shock resistance for devices without incandescent lamp</b> acc. to IEC 60068-2-27	11 ms, 50 g, half-sine									
<b>Vibration resistance</b> acc. to IEC 60068-2-6	2 ... 500 Hz: 5 g									
<b>IP degree of protection</b>	IP66, IP67, IP69K; NEMA Type 1, 3, 3R, 4, 4X, 12									
<b>Climate class in operation</b> acc. to EN 60721	3K6, 3C3, 3S2, 3M6									
<b>Ambient temperature</b>										
• During operation	°C		-25 ... 70							
• During storage	°C		-40 ... 80							

<sup>1)</sup> UL pending for illuminated and non-illuminated Twin Pushbutton and illuminated Pushbutton NEMA Type 1, 3, 3R, 4 and 4X




# SIRIUS ACT Pushbuttons and Indicator Lights




## General data

Type	3SU1...-2A	3SU1...-2B 3SU1...-2C 3SU1...-2D 3SU1...-2E	3SU1...-3E	3SU1...-4B 3SU1...-4C 3SU1...-4D 3SU1...-4F 3SU1...-4G 3SU1...-4H 3SU1...-4J 3SU1...-4L	3SU1...-5B 3SU1...-5H 3SU1...-5J 3SU1...-5K 3SU1...-5L 3SU1...-5P 3SU1...-5Q 3SU1...-5R 3SU1...-5S 3SU1...-5T 3SU1...-5X	3SU1...-7A 3SU1...-7B
Product version	Rotary knob	Selector switch	Toggle switch	Key-operated switch		Coordinate switch
<b>Mechanical endurance (operating cycles) typical</b>	1 000 000					250 000
<b>Switching frequency maximum</b>	1/h	1 800				3 600
<b>Shock resistance for devices without incandescent lamp</b> acc. to IEC 60068-2-27	11 ms, 50 g, half-sine					
<b>Vibration resistance</b> acc. to IEC 60068-2-6	10 ... 500 Hz: 5 g					
<b>IP degree of protection</b>	IP66, IP67, IP69K; NEMA Type 1, 3, 3R, 4, 4X, 12 <sup>1)</sup>					
<b>Ambient temperature</b>						
• During operation	°C	-25 ... +70				
• During storage	°C	-40 ... +80				

Type	3SU1400-.....-1	3SU1400-.....-3	3SU1400-.....-5
Product version	Contact module		
<b>Insulation voltage rated value</b>	V	500	
<b>Pollution degree</b>	3		
<b>Impulse withstand voltage rated value</b>	kV	6	
<b>Operational voltage type</b>	AC/DC		
<b>Operational voltage</b>			
• At AC			
- Rated value	V	5 ... 500	
• At DC			
- Rated value	V	5 ... 500	
<b>Thermal current</b>	A	10	
<b>Operational current, rated value</b>			
• At AC-12			
- At 24 V	A	10	
- At 230 V	A	10	
- At 500 V	A	10	
• At AC-15			
- At 24 V	A	6	
- At 230 V	A	6	
- At 400 V	A	3	
- At 500 V	A	1.4	
• At DC-12			
- At 24 V	A	10	
- At 48 V	A	5	
- At 110 V	A	2.5	
- At 230 V	A	1	
- At 400 V	A	0.3	
- At 500 V	A	0.2	
• At DC-13			
- At 24 V	A	3	
- At 48 V	A	1.5	
- At 110 V	A	0.7	
- At 230 V	A	0.3	
- At 400 V	A	0.1	
- At 500 V	A	0.07	
<b>Contact reliability</b>	One contact failure per 100 million switching operations (17 V, 5 mA), One contact failure per 10 million switching operations (5 V, 1 mA)		
<b>Mechanical endurance (operating cycles) typical</b>	10 000 000		
<b>Switching frequency maximum</b>	1/s	1	

<sup>1)</sup> UL pending for plastic with metal matte front ring and 30 mm flat metal matte Key-operated switch NEMA Type 1, 3, 3R, 4, 4X, 12 and 22 mm shiny metal Key-operated switch NEMA Type 1, 4X (indoor use only) and 12.

Type		3SU1400-.....-1	3SU1400-.....-3	3SU1400-.....-5
Product version		<b>Contact module</b>		
<b>Fuse link version required for short-circuit protection of the auxiliary switch with type of coordination 1</b>		gG / Dz 10 A, quick-response / Dz 16 A		
<b>Continuous current of miniature circuit breaker C characteristic</b>	A	10		
<b>Vibration resistance</b> acc. to IEC 60068-2-6		2 ... 500 Hz: 5 g		
<b>Shock resistance for devices without incandescent lamp</b> acc. to IEC 60068-2-27		11 ms, 50 g, half-sine		
<b>Climate class in operation</b> acc. to EN 60721		3K6, 3C3, 3S2, 3M6		
<b>Ambient temperature</b>				
• During operation	°C	-25 ... +70		
• During storage	°C	-40 ... +80		
<b>IP degree of protection</b>				
• of the enclosure		IP40		
• of the terminal		IP20		
<b>Type of electrical connection</b>		<b>Screw terminals</b> 	<b>Spring-type terminals</b> 	<b>Socket terminals (THT)</b> 
<b>Type of connectable conductor cross-sections</b>				
• For auxiliary contacts				
- Solid		2 x (1.0 .. 1.5 mm <sup>2</sup> )	2 x (0.25 .. 1.5 mm <sup>2</sup> )	0.8 mm x 0.8 mm x 4 mm
- With end sleeves		2 x (0.5 .. 0.75 mm <sup>2</sup> )		--
- Finely stranded				
- Without end sleeves		2 x (0.5 .. 0.75 mm <sup>2</sup> )	2 x (0.25 .. 1.5 mm <sup>2</sup> )	--
- With end sleeves		2 x (0.5 .. 1.5 mm <sup>2</sup> )	2 x (0.25 .. 0.75 mm <sup>2</sup> )	--
• For AWG cables for auxiliary contacts		2 x (18 ... 14)	2 x (24 ... 16)	--
<b>Tightening torque</b>				
• For screw terminals	Nm	0.8 ... 0.9	--	--

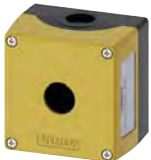
Type		3SU1401-.....-1	3SU1401-.....-3	3SU1401-.....-5
Product version		<b>LED module</b>		
<b>Light source integrated in product</b>		Yes		
<b>Type of light source</b>		LED		
<b>Insulation voltage rated value</b>	V	320		
<b>Pollution degree</b>		3		
<b>Impulse withstand voltage rated value</b>	kV	4		
<b>Operating time typical</b>	h	100 000		
<b>Vibration resistance</b> acc. to IEC 60068-2-6		2 ... 500 Hz: 5 g		
<b>Shock resistance for devices without incandescent lamp</b> acc. to IEC 60068-2-27		11 ms, 50 g, half-sine		
<b>Climate class in operation</b> acc. to EN 60721		3K6, 3C3, 3S2, 3M6		
<b>Ambient temperature</b>				
• During operation	°C	-25 ... +70		
• During storage	°C	-40 ... +80		
<b>IP degree of protection of the terminal</b>		IP20		
<b>Type of electrical connection</b>		<b>Screw terminals</b> 	<b>Spring-type terminals</b> 	<b>Socket terminals (THT)</b> 

Selection and ordering data

Color of enclosure top	Number of command points	Enclosure version	DT	Order No.	PU (UNIT, SET, M)	PS*
------------------------	--------------------------	-------------------	----	-----------	-------------------	-----

Enclosures for surface mounting

**Plastic version**



3SU1801-0AA00-0AA2

Yellow	1	Center command point	A	<b>3SU1801-0AA00-0AA2</b>	1	1 unit
		With protective collar	A	<b>3SU1801-0AA00-0AC2</b>	1	1 unit
		With recess for labeling plate	A	<b>3SU1801-0AA00-0AB2</b>	1	1 unit



3SU1802-0AA00-0AB1

Gray	1	With recess for labeling plate	A	<b>3SU1801-0AA00-0AB1</b>	1	1 unit
	2	With recess for labeling plate	A	<b>3SU1802-0AA00-0AB1</b>	1	1 unit
	3	With recess for labeling plate	A	<b>3SU1803-0AA00-0AB1</b>	1	1 unit
	4	With recess for labeling plate	A	<b>3SU1804-0AA00-0AB1</b>	1	1 unit
	6	With recess for labeling plate	A	<b>3SU1806-0AA00-0AB1</b>	1	1 unit

**Metal version**



3SU1851-0AA00-0AC2

Yellow	1	Center command point	B	<b>3SU1851-0AA00-0AA2</b>	1	1 unit
		With protective collar	B	<b>3SU1851-0AA00-0AC2</b>	1	1 unit
		With recess for labeling plate	A	<b>3SU1851-0AA00-0AB2</b>	1	1 unit



3SU1853-0AA00-0AB1

Gray	1	With recess for labeling plate	▶	<b>3SU1851-0AA00-0AB1</b>	1	1 unit
		With protective collar	B	<b>3SU1851-0AA00-0AC1</b>	1	1 unit
	2	With recess for labeling plate	▶	<b>3SU1852-0AA00-0AB1</b>	1	1 unit
	3	With recess for labeling plate	▶	<b>3SU1853-0AA00-0AB1</b>	1	1 unit



3SU1854-0AA00-0AB1

	4	With recess for labeling plate	▶	<b>3SU1854-0AA00-0AB1</b>	1	1 unit
	6	With recess for labeling plate	B	<b>3SU1856-0AA00-0AB1</b>	1	1 unit

Enclosure for 4-position selector and coordinate switch

**Plastic version**



3SU1801-1AA00-1AA1

Gray	1	Center command point	B	<b>3SU1801-1AA00-1AA1</b>	1	1 unit
------	---	----------------------	---	---------------------------	---	--------

**Metal version**

Gray	1	Center command point	B	<b>3SU1851-1AA00-1AA1</b>	1	1 unit
------	---	----------------------	---	---------------------------	---	--------