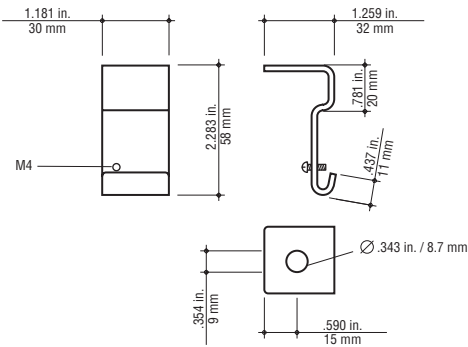


Side Hanger Clamp




Dimensions

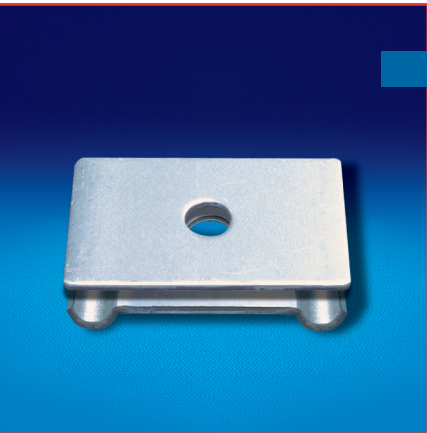


The side hanger clamp is used to construct trapeze supports using threaded rods. The offset support hole allows for trouble-free access to support nuts for height adjustment and the rod can continue downward to allow for multi-level (tiered) trapeze installations. A set screw holds tray firmly in position once installation is complete. Available in pregalvanized steel. For use with 1/4" threaded rod.

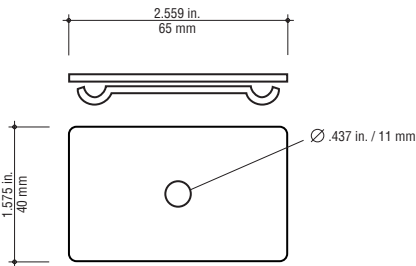
Material	Catalog number	Weight	
		lb/ea.	kg/ea.
Pregalvanized Steel	ETH-SH-PG	0.85	0.39

 Refer to page 33 for an application example.

Threaded Rod Clamp




Dimensions



This clamp is used for center-hung applications to secure tray sections to threaded rod for ceiling mounting and can be used with U-profile tray in 4", 8" and 12" widths. This clamp is not designed for use with C-profile tray. Available in pregalvanized steel. For use with 3/8" threaded rod.

Hole Ø		Catalog number	Weight	
in.	mm		lb/ea.	kg/ea.
0.437	11.0	ETH-CHC-PG	0.18	0.08

 Refer to page 32 for an application example.

Wire Mesh Tray Finish Suffix

Type of Wire Tray	Description	Suffix
ExpressTray	Thomas & Betts Suffix for Finishes Steel Electroplated Zinc Galvanized Steel Pre-Galvanized Steel Hot-Dip Galvanized After Fabrication Stainless Steel AISI Type 304 Black Powder Coat White Powder Coat	SE PG SH / HD Accessories SS BK WH
Wire Basket	B-Line Suffix for Finishes Standard Finish Yellow Zinc Dichromate (Pre-Galvanised Finish) Hot-Dip Galvanized After Fabrication Telco Gray Flat Black Computer White Stainless Steel AISI Type 304	HDG TG FB CW SS4
Flextray	GS Metal Suffix for Finishes Standard Finish Electrogalvanized Black Available in : (Contact Factory) Stainless Steel Hot-Dip Galvanized Custom Colors	BLE
EZ Tray	Cablofil Suffix for Finishes Electro Zinc Hot-Dipped Galvanized Stainless Steel Type 316 Stainless Steel Type 304 Black Powder Coat Red Powder Coat Yellow Powder Coat Gray Example: CF54/50 'xx' where 'xx' is the finish	EZ GC IN IN304 BL RD YL GY
CAT-TRAY	Cope Suffix for Finishes Electro-Plated Zinc Galvanized (Standard Finish) Hot-Dip Galvanized Stainless Steel Type 304 Stainless Steel Type 316 Yellow Zinc Dichromate Example: CAT2-04SL-120-'xx' where 'xx' is the finish	EG HG SS S1 ZD
OBO	OBO Bettermann Suffix Finishes Steel Electroplated Zinc Galvanized Steel Pre-Galvanized Steel Hot-Dip Galvanized After Fabrication Stainless Steel Type 30Y Black Powder Coat White Powder Coat	EG FS FT VA BK WH