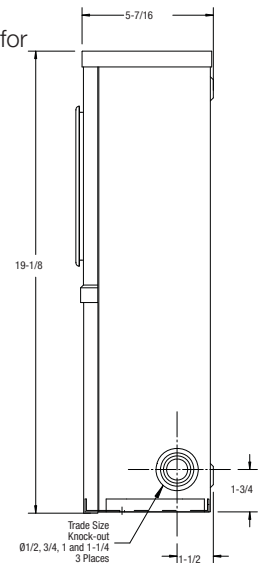
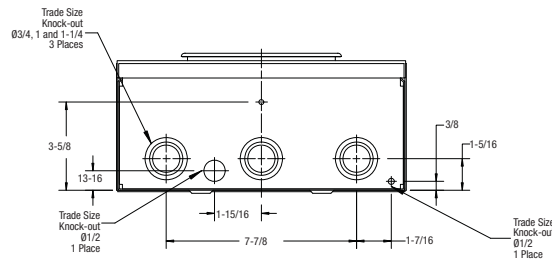
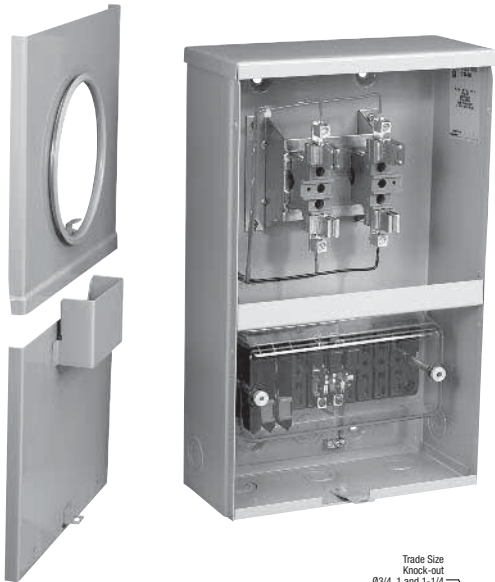


## TRANSFORMER RATED METER SOCKETS • 20 AMP. 600 VOLTS MAX.

### Product Specifications

- Conductor range: 14-10 AWG
- Lower test switch compartment cover securely held by upper cover and a out device with an enlarged pad hole (0.375" dia)
- Test switch included as part of these models
- Units are pre-wired from base to test switch
- Furnished with tamper resistant device for meter ring
- Weatherproof Type 3R enclosure
- **Primarily used in:** Alberta



### Ordering Information

Dimensions are in inches

CATALOGUE NUMBER	DESCRIPTION	DIMENSIONS (inches)			WEIGHT EACH	
		H	W	D	lb	kg
<b>4 JAW</b>						
<b>CT104-SWL</b>	Weatherproof Type 3R enclosure	19-1/8	11-13/16	5-7/16	18	8.2
<b>6 JAW</b>						
<b>CT106-SWL</b>	Weatherproof Type 3R enclosure	19-1/8	11-13/16	5-7/16	21	9.5
<b>13 JAW</b>						
<b>CT113-SWL</b>	Weatherproof Type 3R enclosure	19-1/8	11-13/16	5-7/16	21	9.5