

DMW



Intended Use

Intended for low to medium mounting heights where dust, dirt, humidity, or moisture are present. Ideal for canopies, dock areas, wastewater treatment, refrigerated areas, food processing, and other non-hazardous environments.

Features

- Impact resistant, UV stabilized, fiberglass reinforced polyester housing with cold rolled steel channel
- Poured in place gasketing provides a seal between housing and diffuser
- High-impact acrylic diffuser with stippled interior surface to spread lamp range

- Thermally protected, resetting, Class P, HPF, non-PCB, UL Listed, CSA with standard ballast, sound rated A
- Fixture may be unit or row installed, surface (ceiling or wall) or suspended mounted. Wall mounting; horizontal orientation only for use in damp locations

Listings

120V, 277V, and MVOLT are UL Listed and CSA Certified (standard), 347V is CSA Certified (see Options). NOM Certified (see Options). Listed for 25°C ambient and wet locations for covered ceiling applications. IP65 rated standard. Optional IP67 rating available (supplied with 8 latches on 4' units and 14 latches on 8' units; covered ceiling not required). Compliant to FDA/USDA requirements and/or NSF splash zone certification.

ORDERING INFORMATION

Specifications subject to change.

Example: DMW 2 32 MVOLT GEB1015

Series	Number of lamps ¹	Lamp type	Diffuser	Voltage	Ballast configuration
DMW Wet location	1	28T5 28W T5 (46")	(blank) High-impact acrylic, 50% DR	MVOLT	(blank) Standard configuration
For tandem double-length unit, add prefix T. Example: TDMW	2	32 32W T8 (48")	ARDP Deep high-impact acrylic, 50% DR ³	120	
	3	48T8HO 44W T8HO (48")		277	1/3 One 3-lamp ballast
	Not included.	54T5HO 54W T5HO (46") ²		347	1/4 One 4-lamp ballast
		96T8 59W T8 slimline (96")			
		96T8HO 86W T8 380mA (96")			

Ballast	Options
GEB101S T8 electronic ballast, ≤10% THD, instant start	BCD Mounting bracket to chain hang DMW (2 per package, excludes chain) ^{4,5}
GEB10RS T8 electronic ballast, ≤10% THD, programmed rapid start (347V only)	HC36 Wire hook and 36" chain set (2 per package) ^{4,5}
GEB10PS Electronic ballast, ≤10% THD, programmed rapid start	MSI_ Wet location occupancy sensor pre-wired ^{6,7}
GEB10PS90 T5HO 90° electronic ballast, ≤10% THD, programmed rapid start	IP67 IP67 rated, utilizes 8 latches for 4' fixtures and 14 latches on 8' fixtures
	STSL Stainless steel latches
	WLF Wet location fittings (one pair, installed top, for use with 1/2" rigid conduit)
	CSA Meets Canadian standards (347V only)
	NOM Meets Mexican standards

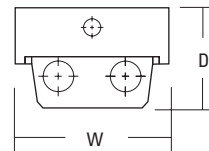
ADDITIONAL INFORMATION

For additional product information, visit www.lithonia.com.

CONFIGURATIONS

SERIES	LAMPS PER CROSS SECTION	LAMPS PER FIXTURE	LAMP TYPE	WIDTH	DEPTH	LENGTH
DMW	1,2,3	1,2,3	28T5,32	7-5/8 (19.4)	4-3/4 (12.1)	50 (127.0)
DMW	1,2	1,2	54T5HO	7-5/8 (19.4)	4-3/4 (12.1)	50 (127.0)
DMW (ARDP)	1,2,3	1,2,3	28T5,32	7-5/8 (19.4)	5-5/8 (14.3)	50 (127.0)
DMW (ARDP)	1,2	1,2	54T5HO	7-5/8 (19.4)	5-5/8 (14.3)	50 (127.0)
DMW	2	2	48T8HO	7-5/8 (19.4)	5-5/8 (14.3)	50 (127.0)
DMW	1,2	1,2	96T8,96T8HO	7-5/8 (19.4)	5-5/8 (14.3)	98 (248.9)
TDMW	1,2	2,4	28T5,54T5HO	7-5/8 (19.4)	5-5/8 (14.3)	98 (248.9)
TDMW	1,2,3	2,4,6	28T5,32	7-5/8 (19.4)	5-5/8 (14.3)	98 (248.9)

Drawings are for dimensional detail only and may not represent actual mechanical configuration. Dimensions are shown in inches (centimeters) unless otherwise noted.



Notes

- 1 See Configurations table for lamp compatibility.
- 2 Must use GEB10PS90 ballast.
- 3 Deep lens is standard on 4' 48T8HO, and on all 8' fixtures. To match deep appearance on all other 4' units, order ARDP lens.
- 4 Order accessories as separate catalog numbers.
- 5 For stainless steel, specify STS (example: BCD STS).
- 6 Must specify voltage.
- 7 For mounting up to 8' specify MSI8; for mounting up to 20' specify MSI20.

Certain airborne contaminants can diminish integrity of acrylic and polycarbonate. Refer to the Acrylic & Polycarbonate Environmental Compatibility tables on pages 1116-1117 for suitable uses.