

# General Identification Materials

www.BradyID.com



3" Core General ID Materials:

## B-483 Polyester Material

Color: White Finish: Gloss

White polyester thermal transfer material with glossy finish and aggressive adhesive specifically designed for powder coated surfaces.

Performance Attributes:

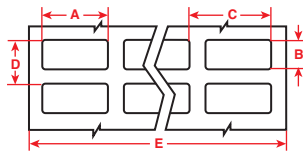


Figure 1

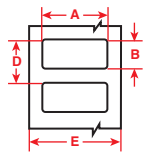


Figure 2

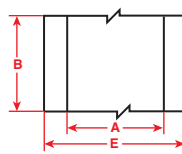


Figure 3

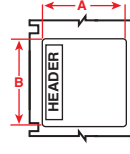


Figure 70

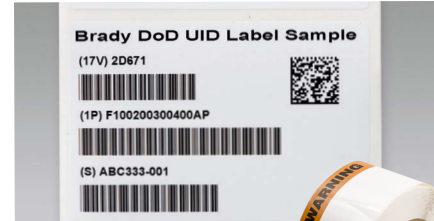


Fig. 70 Labels Preprinted with:  
AV = Advertencia  
DA = Danger  
PE = Peligro  
WA = Warning



Diagram	Catalog #	Material	Color	Label Width A Inch (mm)	Label Height B Inch (mm)	Horiz. Repeat C Inch (mm)	Vert. Repeat D Inch (mm)	Web Width E Inch (mm)	Labels Per Row	Labels Per Pkg	Rec. Ribbon
Fig. 1	THT-5-483-10	Polyester	White	1.000 (25.4)	0.500 (12.7)	1.075 (27.3)	0.600 (15.2)	3.350 (85.1)	3	10,000	R6007
Fig. 2	THT-59-483-10	Polyester	White	1.000 (25.4)	0.500 (12.7)	-	0.600 (15.2)	1.200 (30.5)	1	10,000	R6006
Fig. 1	THT-37-483-10	Polyester	White	1.500 (38.1)	0.500 (12.7)	1.650 (41.9)	0.600 (15.2)	3.350 (85.1)	2	10,000	R6007
Fig. 2	THT-17-483-3	Polyester	White	2.000 (50.8)	1.000 (25.4)	-	1.125 (28.6)	2.200 (55.9)	1	3,000	R6000
Fig. 3	THT-106-483	Polyester	White	2.000 (50.8)	300 ft. (91.4 m)	-	300 ft. (91.4 m)	2.200 (55.9)	1	1 Roll Cont.	R6000
Fig. 2	THT-7-483-3	Polyester	White	2.750 (69.9)	1.250 (31.8)	-	1.375 (34.9)	2.950 (74.9)	1	3,000	R6002
Fig. 2	THT-18-483-3	Polyester	White	3.000 (76.2)	1.000 (25.4)	-	1.125 (28.6)	3.200 (81.3)	1	3,000	R6002
Fig. 2	THT-19-483-1	Polyester	White	3.000 (76.2)	2.000 (50.8)	-	2.125 (54.0)	3.200 (81.3)	1	1,000	R6002
Fig. 3	THT-21-483	Polyester	White	3.000 (76.2)	300 ft. (91.4 m)	-	300 ft. (91.4 m)	3.200 (81.3)	1	1 Roll Cont.	R6002
Fig. 2	THT-55-483-1	Polyester	White	4.000 (101.6)	2.000 (50.8)	-	2.125 (54.0)	4.200 (106.7)	1	1,000	R6007
Fig. 2	THT-76-483-1	Polyester	White	4.000 (101.6)	3.000 (76.2)	-	3.125 (79.4)	4.200 (106.7)	1	1,000	R6007
Fig. 3	THT-107-483	Polyester	White	4.000 (101.6)	300 ft. (91.4 m)	-	300 ft. (91.4 m)	4.200 (106.7)	1	1 Roll Cont.	R6007
Fig. 2	THT-161-483-1	Polyester	White	4.000 (101.6)	4.000 (101.6)	-	4.125 (104.8)	4.200 (106.7)	1	1,000	R6007
Fig. 70	THTEL-184-483-1-AV	Polyester	Orange on White	3.000 (76.2)	3.000 (76.2)	-	3.125 (79.4)	3.200 (81.3)	1	2 rolls of 500	R6002
Fig. 70	THTEL-184-483-1-WA	Polyester	Orange on White	3.000 (76.2)	3.000 (76.2)	-	3.125 (79.4)	3.200 (81.3)	1	2 rolls of 500	R6002
Fig. 70	THTEL-161-483-1-AV	Polyester	Orange on White	4.000 (101.6)	4.000 (101.6)	-	4.125 (104.8)	4.200 (106.7)	1	2 rolls of 500	R6007
Fig. 70	THTEL-161-483-1-WA	Polyester	Orange on White	4.000 (101.6)	4.000 (101.6)	-	4.125 (104.8)	4.200 (106.7)	1	2 rolls of 500	R6007
Fig. 70	THTEL-25-483-5-WA	Polyester	Orange on White	6.000 (152.4)	4.000 (101.6)	-	6.125 (155.6)	4.200 (106.7)	1	500	R6007
Fig. 70	THTEL-25-483-1-AV	Polyester	Orange on White	6.000 (152.4)	4.000 (101.6)	-	6.125 (155.6)	4.200 (106.7)	1	2 rolls of 500	R6007
Fig. 70	THTEL-25-483-1-WA	Polyester	Orange on White	6.000 (152.4)	4.000 (101.6)	-	6.125 (155.6)	4.200 (106.7)	1	2 rolls of 500	R6007
Fig. 70	THTEL-184-483-1-DA	Polyester	Red on White	3.000 (76.2)	3.000 (76.2)	-	3.125 (79.4)	3.200 (81.3)	1	2 rolls of 500	R6002
Fig. 70	THTEL-184-483-1-PE	Polyester	Red on White	3.000 (76.2)	3.000 (76.2)	-	3.125 (79.4)	3.200 (81.3)	1	2 rolls of 500	R6002
Fig. 70	THTEL-161-483-1-DA	Polyester	Red on White	4.000 (101.6)	4.000 (101.6)	-	4.125 (104.8)	4.200 (106.7)	1	2 rolls of 500	R6007
Fig. 70	THTEL-161-483-1-PE	Polyester	Red on White	4.000 (101.6)	4.000 (101.6)	-	4.125 (104.8)	4.200 (106.7)	1	2 rolls of 500	R6007
Fig. 70	THTEL-25-483-5-DA	Polyester	Red on White	6.000 (152.4)	4.000 (101.6)	-	6.125 (155.6)	4.200 (106.7)	1	500	R6007
Fig. 70	THTEL-25-483-1-DA	Polyester	Red on White	6.000 (152.4)	4.000 (101.6)	-	6.125 (155.6)	4.200 (106.7)	1	2 rolls of 500	R6007
Fig. 70	THTEL-25-483-1-PE	Polyester	Red on White	6.000 (152.4)	4.000 (101.6)	-	6.125 (155.6)	4.200 (106.7)	1	2 rolls of 500	R6007

**NOTICE BBP<sup>®</sup>11 PRINTER ONLY:** The following part numbers ending with "-SC" are 1" Small Core Rolls specially designed for use in the BBP11 Printer and do not require the BBP11 media adaptor accessory. View page 82 for more information.

Fig. 1	THT-5-483-5-SC	Polyester	White	1.000 (25.4)	0.500 (12.7)	1.075 (27.3)	0.600 (15.2)	3.350 (85.1)	3	5,000	R6013
Fig. 2	THT-17-483-1.5-SC	Polyester	White	2.000 (50.8)	1.000 (25.4)	-	1.125 (28.6)	2.200 (55.9)	1	1,500	R6013
Fig. 2	THT-18-483-1.5-SC	Polyester	White	3.000 (76.2)	1.000 (25.4)	-	1.125 (28.6)	3.200 (81.3)	1	1,500	R6013



3" Core General ID Materials:

## B-484 Polyester Material

Color: White Finish: Gloss

White polyester thermal transfer material is similar to B-483, but with thinner construction for curved or angled surfaces. Offers aggressive adhesive for adhesion to textured metals and low surface energy plastics.

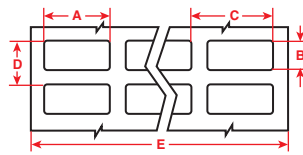


Figure 1

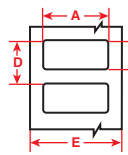


Figure 2



Performance Attributes:

Diagram	Catalog #	Material	Color	Label Width A Inch (mm)	Label Height B Inch (mm)	Horiz. Repeat C Inch (mm)	Vert. Repeat D Inch (mm)	Web Width E Inch (mm)	Labels Per Row	Labels Per Pkg	Rec. Ribbon
Fig. 1	THT-5-484-10	Polyester	White	1.000 (25.4)	0.500 (12.7)	1.075 (27.3)	0.600 (15.2)	3.350 (85.1)	3	10,000	R6007
Fig. 2	THT-17-484-3	Polyester	White	2.000 (50.8)	1.000 (25.4)	-	1.125 (28.6)	2.200 (55.9)	1	3,000	R6000
Fig. 2	THT-18-484-3	Polyester	White	3.000 (76.2)	1.000 (25.4)	-	1.125 (28.6)	3.200 (81.3)	1	3,000	R6002
Fig. 2	THT-55-484-1	Polyester	White	4.000 (101.6)	2.000 (50.8)	-	2.125 (54.0)	4.200 (106.7)	1	1,000	R6007

View the Material Brands & Attributes Guide on page 4.

Benchtop Printer Ribbons on page 184.

Full Material Properties on page 187.