

# Portable Printers

BradyID.com/s34

## Portable Printer Comparison Guide

Use the following comparison guide to quickly see which printer best fits your application needs. Then turn to the following pages to find out more about each printer, compatible materials and print ribbons.



**BMP®21-PLUS Label Printer**  
See page 290



**BMP®41 Label Printer**  
See page 294



**BMP®53 Label Printer**  
See page 300

Printer Specifications	BMP®21-PLUS Label Printer	BMP®41 Label Printer	BMP®53 Label Printer
<b>Max Labels Per Day</b>	Average 100 labels/day	Average 250 labels/day	Average 500 labels/day
<b>Print Resolution</b>	203 dpi	300 dpi	300 dpi
<b>Print Technology</b>	Thermal transfer	Thermal transfer	Thermal Transfer
<b>Print Speed</b>	10mm/sec (0.4 in/sec)	133mm/sec (1.3in/sec)	25.4mm/sec (1/sec)
<b>Tape Widths (inches)</b>	Various sizes from 0.250" to 0.750"	Various sizes from 0.235" to 1.0"	Various sizes from 0.235" to 1.50"
<b>Tape Widths (mm)</b>	Various sizes from 6.4 mm to 19.1 mm	Various sizes from 5.969 mm to 25.4 mm	Various sizes from 6.4 mm to 38.1 mm
<b>Max Label Width</b>	0.75" (19.1 mm)	1.00" (25.4mm)	1.50" (38.1mm)
<b>Max Print Width</b>	0.63" (16 mm)	0.96" (24.4 mm)	1.44" (36.6 mm)
<b>Memory</b>	16MB, 10 Labels (2MB available for storage)	48 MB / Up to 25,000 Labels	48 MB / Up to 25,000 Labels
<b>Materials Supported</b>	M21- Series Cartridges 70+ Stock Parts	M-, MC-, MC1- Series Cartridges (1.00" and 0.75" height only) 100+ Stock Parts	M-, MC-, MC1- Series Cartridges (all sizes) 140+ Stock Parts
<b>Continuous vs Die Cut Labels</b>	Continuous Labels Only	Continuous and die cut labels	Continuous and die cut labels
<b>Connectivity Options</b>	Not Applicable	Yes	Yes
<b>PC Connectivity</b>	No	USB	USB, WiFi, LAN
<b>Software Compatibility</b>	No	Optional through USB	LabelMark® / CodeSoft™ Software
<b>File Transfer from PC to printer</b>	No	Yes - with Labelmark® Software	Yes, with Labelmark® Software
<b>Wireless Connectivity</b>	No	No	Yes
<b>Stand Alone Printing</b>	Yes	Yes	No
<b>Color Capability</b>	Single print color on a label	Single print color on a label	Single print color on a label
<b>Keyboard</b>	ABC or Cyrillic	QWERTY	Not Applicable
<b>Backlit Screen</b>	2" x 1", user adjustable backlit	2.5" x 1.4", user adjustable backlit	Not Applicable
<b>Text Sizes</b>	6-40 pt with Autosizing	4 to 103pt + autosizing	4 to 103pt + autosizing
<b>Multi-Line Print</b>	Yes	Yes	Yes
<b>Print Rotation</b>	No	Yes	Yes
<b>Serialization</b>	Yes	Yes	Yes
<b>Barcode</b>	39 and 128	39 and 128	39 and 128
<b>Symbols Categories</b>	104	450	450
<b>Portability</b>	Yes	Yes	Yes
<b>Label Types or Application Functions</b>	PermaSleeve® Heat Shrink Tubing, Permanent Polyester, Self-laminating Vinyl, Clear Polyester, High Performance Polyester, Nylon Cloth, Indoor/Outdoor Vinyl, Polypropylene	Adhesive Polyester, PermaSleeve® Heat Shrink Tubing, Polypropylene Tags, Self-laminating Vinyl, Metallized Polyester Ultra Aggressive Polyester, Repositional Vinyl Cloth, Nylon Cloth, Reflective Tape, Indoor/Outdoor Vinyl,	Polyester, Polyethylene Tag, Permasleeve® Heat Shrinking Tube, Tamper-Evident Vinyl, Polypropylene Tag, Permanent Polypropylene, Self-Laminating vinyl, Metallized Polyester, Self-Laminating Polyester, Staingerbondz™ Labels, Tissue Cassette Polyester, Ultra aggressive Polyester, High Performance Polyester, Freezerbondz™ Labels, Repositionable Vinyl Cloth, Reflective Tap, Indoor/Outdoor Vinyl
<b>Applications</b>	Basic labels for Wire and Cable ID, Datacomm and AV Labeling, Inside-panel Component Labeling, and General Industrial Labels for Maintenance, Production and Visual Workplace/Lean 5S.	Basic and Die Cut labels for Wire and Cable ID, Datacomm and AV labeling, Electrical ID, Panel ID, Product ID, Facility ID, Safety and Maintenance, General ID	Data Communications Labeling, Facility, Safety & Maintenance Identification, General & Industrial Labeling, Laboratory Identification, Panel Identification, Security Identification, Wire & Cable Marking
<b>Power Supply</b>	6 AA batteries, AC adapters: US 110V, UK 240V, Europe 220V, or Lithium Ion Rechargeable Battery	AC Power, rechargeable NiMH battery	AA Alkaline batteries (8), AC Power, or rechargeable lithium ion battery
<b>Weight</b>	1.66 lbs (0.75 kg)	2.6 lbs (1.2 kg)	2.6 lbs (1.2 kg)
<b>Warranty</b>	2 years	2 years	2 years

\* Test 3rd party software integration for intended application prior to purchase.  
Windows® is a registered trademark of Microsoft Corporation.



**BMP®51 Label Printer**  
See page 300



**TLS 2200® / TLS PC Link™  
Thermal Label Printers**  
See page 310



**BMP®71  
Label Printer**  
See page 324

Printer Specifications	BMP®51 Label Printer	TLS 2200® / TLS PC Link™ Printers	BMP®71 Label Printer
<b>Max Labels Per Day</b>	Average 500 labels/day	Average 750 labels/day	Average 1000 labels/day
<b>Print Resolution</b>	300 dpi	203 dpi	300 dpi
<b>Print Technology</b>	Thermal Transfer	Thermal Transfer	Thermal Transfer
<b>Print Speed</b>	25.4mm/sec (1/sec)	12 mm/sec (0.47 in/sec)	38mm/sec (1.5"/sec)
<b>Tape Widths (inches)</b>	Various sizes from 0.235" to 1.50"	Various sizes from 0.25" to 2.00"	Various sizes from 0.235" to 2.00"
<b>Tape Widths (mm)</b>	Various sizes from 6.4 mm to 38.1 mm	Various sizes from 6.4 to 50.8 mm	Various sizes from 6.4 to 50.8 mm
<b>Max Label Width</b>	1.50" (38.1mm)	2.00" (50.8mm)	2.00" (50.8mm)
<b>Max Print Width</b>	1.44" (36.6 mm)	1.810" (46.0mm)	1.92" (48.76 mm)
<b>Memory</b>	48 MB / Up to 25,000 Labels	21,000 characters / None	200 MB
<b>Materials Supported</b>	M-, MC-, MC1- Series Cartridges (all sizes) 140+ Stock Parts	PTL-, BPTL- Series 500+ Stock Parts	M71-, BM71-, BPTL- Series 450+ stock parts, plus TLS parts with adaptor
<b>Continuous vs Die Cut Labels</b>	Continuous and die cut labels	Continuous and die cut labels	Continuous and die cut labels
<b>Connectivity Options</b>	Yes	Serial	Yes
<b>PC Connectivity</b>	USB, WiFi, LAN	Yes	USB
<b>Software Compatibility</b>	LabelMark® / CodeSoft™ Software	LabelMark® / CodeSoft™ Software	LabelMark® / CodeSoft™ Software
<b>Data Transfer from PC to printer</b>	Yes, with Labelmark® Software	No	Yes - with Labelmark® Software
<b>Wireless Connectivity</b>	Yes	No	No
<b>Stand Alone Printing</b>	Yes	Yes	Yes
<b>Color Capability</b>	Single print color on a label	Single Color Printing	Single print color on a label
<b>Keyboard</b>	QWERTY	ABC / None	QWERTY, AZERTY, QWERTZ, CYRILLIC
<b>Backlit Screen</b>	2.7" x 1.7", backlit	No	3.5", backlit
<b>Text Sizes</b>	4 to 103pt + autosizing	1 to 19 (4 to 72 point)	4 to 174 pt + autosizing
<b>Multi-Line Print</b>	Yes	Yes	Yes
<b>Print Rotation</b>	Yes	Yes	Yes
<b>Serialization</b>	Yes	Yes	Yes, multiple and linked
<b>Barcode</b>	39 and 128	128, IFT 25, Codabar	39 and 128
<b>Symbols</b>	450	44 on keypad / LabelMark Supported Symbols	500+
<b>Portability</b>	Yes	Yes / No	Yes
<b>Label Types or Application Functions</b>	Polyester (Metallized, Ultra Aggressive, & High Performance) Polyethylene Tag, Permasleeve® Heat Shrinking Tube, Tamper-Evident Vinyl, Polypropylene Tag, Permanent Polypropylene, Self-Laminating vinyl, Self-Laminating Polyester, Stainerbondz™ Labels, Tissue Cassette Polyester, Freezerbondz™ Labels, Repositionable Vinyl Cloth, Reflective, Indoor/Outdoor Vinyl	Banner Portrait, Banner Landscape, Wire, Patch Panel, Terminal Block, Desi Strip, Fixed Length	Polyester (Adhesive, Permanent, Metallized, Clear, Flame Retardant, Ultra Aggressive, & High Performance, Engraved Plate Substitute) Polyethylene Tag, Polyethylene, Block Vinyl, Permasleeve® Heat Shrinking, Polypropylene Tag, Polyimide, Vinyl (Tamper-Evident, Destructible, Repositional, Self Laminating, Indoor/Outdoor) Polyimide, Repositionable Vinyl Cloth, Nylon Cloth, Polypropylene Tape, Phosphorescent, Reflective, Tedlar, ToughWash, ToughWash Metal Detectable
<b>Applications</b>	Data Communications Labeling, Facility, Safety & Maintenance Identification, General & Industrial Labeling, Laboratory Identification, Panel Identification, Security Identification, Wire & Cable Marking	Circuit Board Labeling, Data Communications Labeling, Facility, Safety & Maintenance Identification, General & Industrial Labeling, Laboratory Identification, Panel Identification, Security Identification, Wire & Cable Marking	Circuit Board Labeling, Data Communications Labeling, Facility, Safety & Maintenance Identification, General & Industrial Labeling, Panel Identification, Security Identification, Wire & Cable Marking, Pipe Marking
<b>Power Supply</b>	AA Alkaline batteries (8), AC Power, or rechargeable lithium ion battery	Rechargeable Battery, AC Power (optional)	Rechargeable NiMH battery, AC Power/battery changer
<b>Weight</b>	2.6 lbs (1.2 kg)	2.75 lbs (1.25kg) / 2.5 lbs (1.13kg)	5.429 lbs (2.47 kg)
<b>Warranty</b>	2 years	1 year	1 year

\* Test 3rd party software integration for intended application prior to purchase.  
Windows® is a registered trademark of Microsoft Corporation.

# BMP®51 and BMP®53 Label Makers

BradyID.com/bmp51



**BMP®51**  
LABEL MAKER

**BMP®53**  
LABEL MAKER

BRADY 360°  
**2 YEAR**  
WARRANTY

## Made to get the **job done.**

Print continuous and die cut labels up to 1.5" wide and with more material options.

- Ribbon and label materials in one easy to load cartridge
- Fast print speed. Prints 1 inch per second!
- More than 200 label parts in 14 material types
- 1" sleeves and 1.5" wide continuous output
- Material recognition and automatic label formatting
- Large, graphical display with backlight
- Durable built-in cutter with label retention
- Compatibility with LabelMark™ software for advanced label design and data importation
- Built-in Bluetooth® technology or optional Wi-Fi card for wireless printing via a network
- Continuous and die-cut label materials available
- Tough, durable label materials that won't fade, smear or fall off



### View Online!

Visit **BradyID.com/bmp51** for more information on the BMP®51 and BMP®53 label printers.

### Your Complete Printing Solution:

BMP®51 & BMP®53 cartridges with label and print ribbon..... page 302



BMP®51 Label Maker

## Don't need the keyboard or screen?

Check out the BMP®53 Label Maker - many of the same features as the BMP®51 Label Maker, minus the display screen and keyboard.

- Create labels with LabelMark™ or CodeSoft™ Software, or using a Brady Mobile App on your smart phone
- Use the same label cartridges as BMP51

### BMP®51 & BMP®53 Label Printers

Catalog #	Description
BMP51	BMP51 Printer, Rechargeable Li-Ion Battery Pack and AC Adaptor/Battery Charger*
BMP51-KIT-AC	BMP51 Printer with AC Adaptor/Battery Charger*
BMP51-KIT-LMK	BMP51 Printer, LabelMark Software and AC Adaptor*
BMP53	BMP53 Peripheral Printer with AC Adaptor*
BMP53-KIT-AC-BP	BMP53 Printer, Rechargeable Li-Ion Battery Pack and AC Adaptor/Battery Charger*
BMP53-KIT-LMK	BMP53 Printer, LabelMark Software and AC

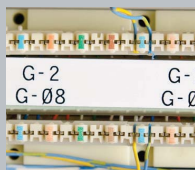
\* Printer ships with Hard Carrying Case, Battery Tray for AA batteries, USB Cable, Drivers CD, Product CD, Quick Start Guide, and one MC-1500-595-WT-BK. BMP53 printer also ships with a pre-installed WiFi network card. Network cards for BMP51 printer sold separately.

Patents applied for: 6,732,619 and 7,070,347 on the BMP51 and BMP53 Label Makers. 6,929,415 on the PermaSleeve® cartridges. 8,542,155 on wireless and ethernet cards.

### Accessories

Catalog #	Description
M50-MAGNET	BMP50 Series Magnet Accessory
BMP-UBP	Lithium Ion Rechargeable Battery Pack for Mobile Printers
BMP-UBP-AC	Lithium Ion Rechargeable Battery Pack with AC Adaptor/Battery Charger
142267	Brady Network Card - Ethernet only
142268	Brady Network Card - WiFi + Ethernet
M50-HC	BMP50 Series Hard Carrying Case
M50-SC	BMP50 Series Soft Carrying Case
M-AC-143110	BMP50 Series AC Adaptor/Battery Charger
M50-CABLE	BMP50 Series USB Cable
M50-BATT-TRAY	BMP50 Series Spare Battery Tray
LM5STD CD	LabelMark Standard Software - CD-ROM

## Get the job done **FASTER, EASIER** and **WITH CONFIDENCE.**



Voice & Data  
Communications



PermaSleeve®  
Wire Marking Sleeves



Product Identification



Facility & Safety  
Identification



Laboratory  
Identification



General ID  
...and many more!

# BMP®51 and BMP®53 Label Makers

BradyID.com/bmp51

	BMP®53 Printer Specifications	BMP®51 Printer Specifications
<b>Max Labels Per Day</b>	Average 500 labels/day	Average 500 labels/day
<b>Print Resolution</b>	300 dpi	300 dpi
<b>Print Technology</b>	Thermal Transfer	Thermal Transfer
<b>Print Speed</b>	25.4mm/sec (1/sec)	25.4mm/sec (1/sec)
<b>Tape Widths (inches)</b>	Various sizes from 0.235" to 1.50"	Various sizes from 0.235" to 1.50"
<b>Tape Widths (mm)</b>	Various sizes from 6.4 mm to 38.1 mm	Various sizes from 6.4 mm to 38.1 mm
<b>Max Label Width</b>	1.50" (38.1mm)	1.50" (38.1mm)
<b>Max Print Width</b>	1.44" (36.6 mm)	1.44" (36.6 mm)
<b>Memory</b>	48 MB / Up to 25,000 Labels	48 MB / Up to 25,000 Labels
<b>Materials Supported</b>	M-, MC-, MC1- Series Cartridges (all sizes) 140+ Stock Parts	M-, MC-, MC1- Series Cartridges (all sizes) 140+ Stock Parts
<b>Continuous vs Die Cut Labels</b>	Continuous and die cut labels	Continuous and die cut labels
<b>PC Connectivity</b>	Yes	Yes
<b>Software Compatibility</b>	USB, WiFi, LAN	USB, WiFi, LAN
<b>Data Transfer from PC to printer</b>	LabelMark® / CodeSoft™ Software	LabelMark® / CodeSoft™ Software
<b>Wireless Connectivity</b>	Yes, with Labelmark® Software	Yes, with Labelmark® Software
<b>Stand Alone Printing</b>	Yes	Yes
<b>Connectivity Options</b>	No	Yes
<b>Color Capability</b>	Single print color on a label	Single print color on a label
<b>Keyboard</b>	Not Applicable	QWERTY
<b>Backlit Screen</b>	Not Applicable	2.7" x 1.7", backlit
<b>Text Sizes</b>	4 to 103pt + autosizing	4 to 103pt + autosizing
<b>Multi-Line Print</b>	Yes	Yes
<b>Print Rotation</b>	Yes	Yes
<b>Serialization</b>	Yes	Yes
<b>Barcode</b>	39 and 128	39 and 128
<b>Symbols</b>	450	450
<b>Portability</b>	Yes	Yes
<b>Label Types or Application Functions</b>	BMP51 and BMP53 Printers: Polyester, Polyethylene Tag, Permasleeve® Heat Shrinking Tube, Tamper-Evident Vinyl, Polypropylene Tag, Permanent Polypropylene, Self-Laminating vinyl, Metallized Polyester, Self-Laminating Polyester, Staingerbondz™ Labels, Tissue Cassette Polyester, Ultra aggressive Polyester, High Performance Polyester, Freezerbondz™ Labels, Repositionable Vinyl Cloth, Reflective Tap, Indoor/Outdoor Vinyl	
<b>Applications</b>	BMP51 and BMP53 Printers: Data Communications Labeling, Facility, Safety & Maintenance Identification, General & Industrial Labeling, Laboratory Identification, Panel Identification, Security Identification, Wire & Cable Marking	
<b>Power Supply</b>	AA Alkaline batteries (8), AC Power, or rechargeable lithium ion battery	AA Alkaline batteries (8), AC Power, or rechargeable lithium ion battery
<b>Weight</b>	2.6 lbs (1.2 kg)	2.6 lbs (1.2 kg)
<b>Warranty</b>	2 years	2 years

## LabelMark™ Software

Use LabelMark™ Software to create labels and print them on your BMP®51 and BMP®53 printer using the supplied USB cable. LabelMark allows users to integrate data sources, design labels and even batch print all from one PC-based program. This user-friendly label design and printing software is ideal for electrical, wire ID, datacomm and product ID applications.



### Label set up and data management features

- Electrical labeling wizards for control panel, 110 Block, and wire harness assembly
- Select template for datacomm labeling by manufacturer/model
- Manage multiple files in a single job by grouping wire markers, push buttons, rating plates, and terminal block labels into one job file
- Complete integration with Microsoft Office® and AutoCAD applications

### Print labels faster and more efficiently

- Print labels simultaneously on multiple printers for fast label kitting
- Design fixed text labels for quick printing or free form labels for custom label design

## Network your Printer

The BMP®51 and BMP®53 printer connect to your PC via the included USB cable. To avoid use of a physical cable, network cards are available for the printers.



**BMP51 printer** is compatible with two optional field-installable network cards:

- Ethernet Only Card (catalog #: 142267)
- WiFi + Ethernet (catalog #: 142268)



**BMP®53 Printer** is a PC-connect only printer and ships with the Ethernet Only Card pre-installed. The WiFi + Ethernet card is available separately and can be field installed.



## Away from your PC? Use the Mobile Apps for Android

"Brady Mobile" - the first mobile Brady apps for on-the-job label making. Simply download the Brady Mobile app on your Android phone to:

- Design a label or edit an existing label
- Create and edit label templates
- Print to BMP®51 or BMP®53 Printers using WiFi direct technology
- Save label files to your mobile device
- Built-in barcodes, symbols and pictograms that you can insert onto your labels
- Automatically updates when new label types, printers and materials are available



### To Download the Mobile Apps:

Open Google Play on your mobile device and search for "Brady Mobile."

Brady Mobile App is designed to run on Android OS Version 2.2 or higher.

Android is a trademark of Google Inc.  
Bluetooth® is a registered trademark of Bluetooth SIG, Inc.  
Microsoft Office is a registered trademark of Microsoft Corporation.