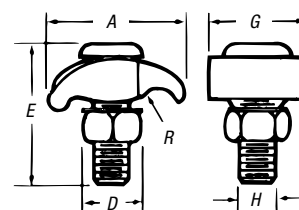


Structure Grounding

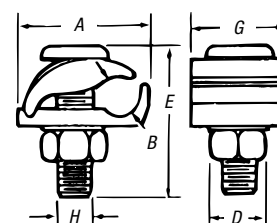
Bolt features square shank to prevent turning and enable clamp to be tightened with a single wrench.

Type GTC — Tower Ground Clamps

- Castings of high-strength, corrosion-resistant copper alloy
- GTC23 and GTC24 are two-piece clamps for connecting ground lead cable to flat metal surface — ideal for grounding substations on tower footings
- GTC13 and GTC14 are economical one-piece clamps, which perform the same function as two-piece clamps, except under-pad support is omitted and conductor connects directly to tower
- Add suffix L to catalog number for 1/2" channel thickness



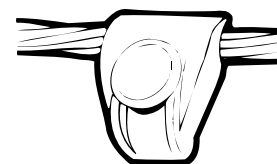
Type GTC 13 and 14



Type GTC 23 and 24



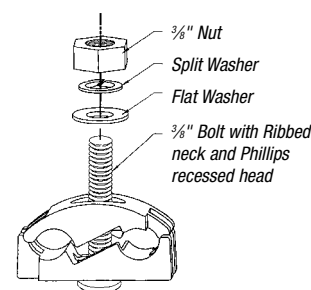
CAT. NO.	CONDUCTOR RANGE				CHANNEL THICKNESS	DIMENSION (IN.)						
	MAX.	MIN.	MAX. (MM ²)	MIN. (MM ²)		A	B	D	E	G	H	R
GTC13	2/0 Str.	#4 Sol.	67.4	21.1	1/4	1 15/32	—	9/16	1 21/32	1 3/32	3/8	7/32
GTC14	250 kcmil	2/0 Str.	126.6	67.4	1/4	1 15/16	—	3/4	1 15/16	1 13/32	1/2	5/16
GTC23	2/0 Str.	#4 Sol.	67.4	21.1	1/4	1 41/64	7/16	9/16	1 21/32	1 3/32	3/8	—
GTC24	250 kcmil	2/0 Str.	126.6	21.1	1/4	1 61/64	5/8	3/4	1 15/16	1 1/8	1/2	—



For use with aluminum or copper conductors.

CTG250 Wide-Range Tower Ground Clamp

- May be used in aluminum or galvanized-steel cable tray
- Ribbed neck on the bolt prevents rotation during tightening if .440" dia. hole is used



CAT. NO.	WIDE RANGE (2 SIDES)	HEIGHT	WIDTH	DEPTH	NUT (FLATS)
CTG250	#2 Sol. (.258 Dia.) 250 kcmil (.575 Dia.)	1.95	2.00	1.13	.560

Tin-plate body
Galvanized hardware